

# WYLSN SEVEN DEPARTURE (RNAV)

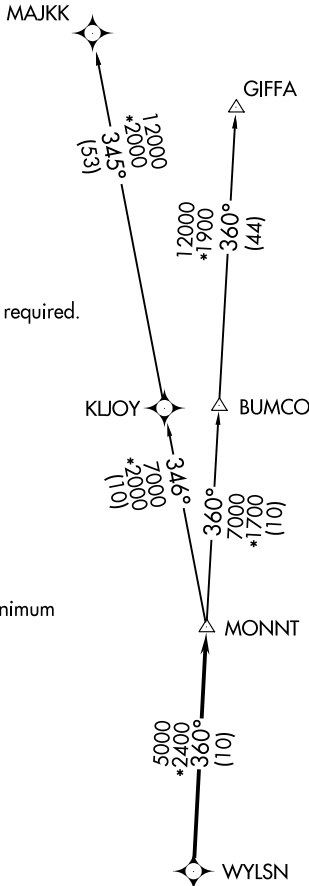
ATIS  
 119.525  
 CLNC DEL  
 132.075  
 CTAF  
 126.975  
 HOUSTON DEP CON  
 123.8 257.7

**TOP ALTITUDE:  
 ASSIGNED BY ATC**

NOTE: RADAR required.  
 NOTE: DME/DME/IRU or GPS required.  
 NOTE: RNAV 1.

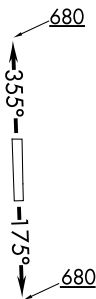
### TAKEOFF MINIMUMS

Rwy 18, 36: Standard with minimum  
 climb of 500' per NM to 680.



SC-5, 09 SEP 2021 to 07 OCT 2021

SC-5, 09 SEP 2021 to 07 OCT 2021



**DEPARTURE ROUTE DESCRIPTION**

TAKEOFF RWY 18: Climb on heading 175° to 680 for RADAR vectors to WYLSN, then... .

TAKEOFF RWY 36: Climb on heading 355° to 680 for RADAR vectors to WYLSN, then... .

...on track 360° to MONNT, then on (transition).  
 Maintain ATC assigned altitude. Expect filed altitude 10 minutes after departure.

GIFFA TRANSITION (WYLSN7.GIFFA)  
MAJJK TRANSITION (WYLSN7.MAJJK)

NOTE: Chart not to scale.

# WYLSN SEVEN DEPARTURE (RNAV)