

WAAS CH 93842 W18A	APP CRS 179°	Rwy Idg TDZE 177 Apt Elev 177	5002
--	------------------------	---	-------------

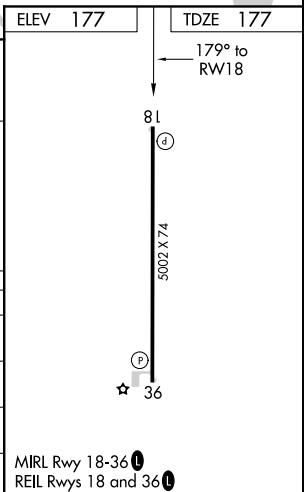
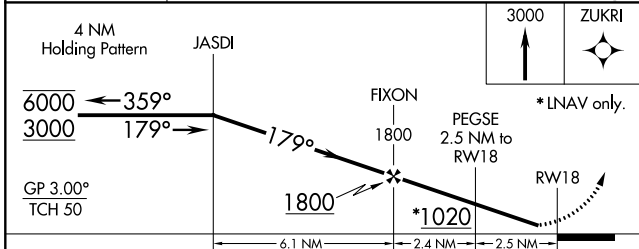
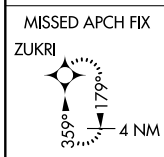
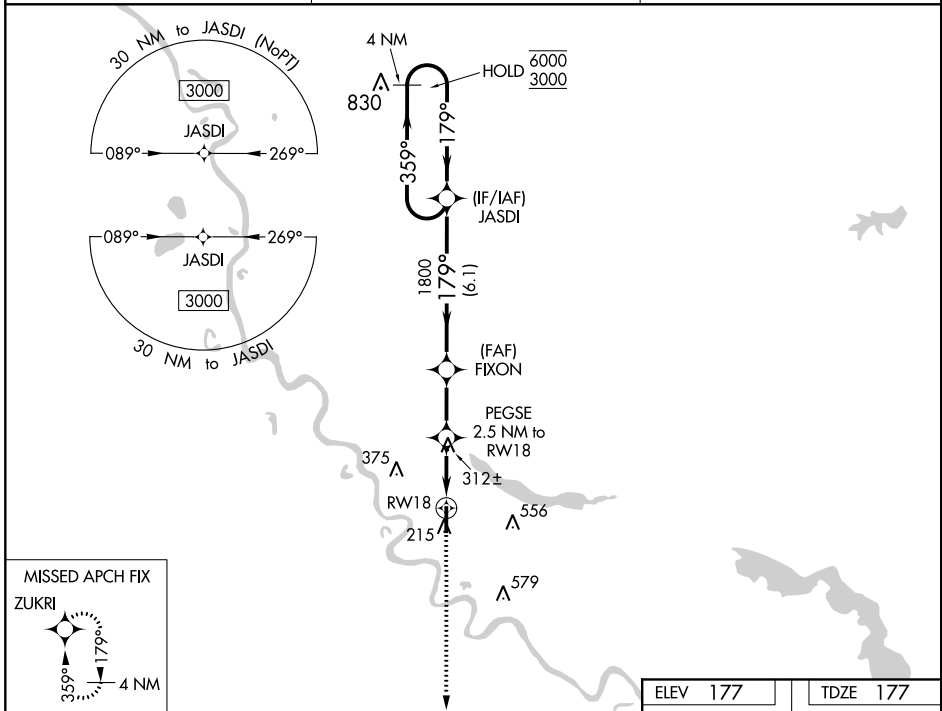
RNAV (GPS) RWY 18

THE RED RIVER (ØR7)

RNP APCH.

- ▼** Rwy 18 helicopter visibility reduction below ¼ SM NA.
 - ▲** NA Baro-VNAV NA. Use Natchitoches altimeter setting.
- MISSED APPROACH: Climb to 3000 direct ZUKRI and hold, continue climb in hold to 3000.

IER AWOS-3 119.025	POLK APP CON 132.05 254.8	CTAF 122.9 0
------------------------------	-------------------------------------	------------------------



CATEGORY	A	B	C	D
LPV DA	478-1 301 (400-1)			
LNAV/VNAV DA	632-1 ³ / ₈ 455 (500-1 ³ / ₈)			
LNAV MDA	620-1	443 (500-1)	620-1 ³ / ₈	443 (500-1 ³ / ₈)
C CIRCLING	660-1	483 (500-1)	920-2 ¹ / ₄ 743 (800-2 ¹ / ₄)	940-2 ¹ / ₂ 763 (800-2 ¹ / ₂)

SC-4, 09 SEP 2021 to 07 OCT 2021

SC-4, 09 SEP 2021 to 07 OCT 2021

MIRL Rwy 18-36
REIL Rwy 18 and 36