

WAAS CH 42619 W36A	APP CRS 003°	Rwy Idg TDZE Apt Elev	4600 3318 3326
--	------------------------	-----------------------------	---

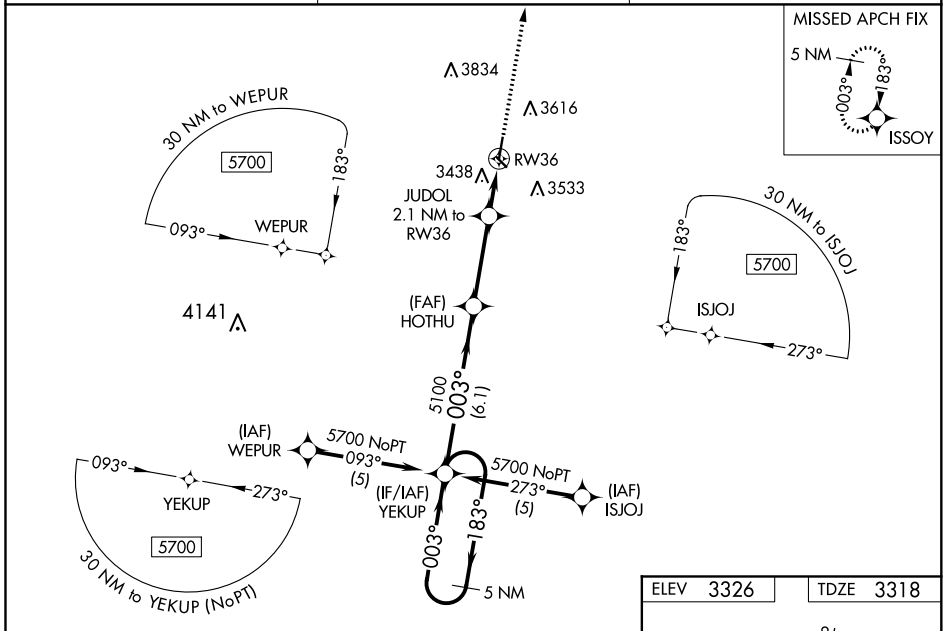
RNAV (GPS) RWY 36

SYRACUSE-HAMILTON COUNTY MUNI (3K3)

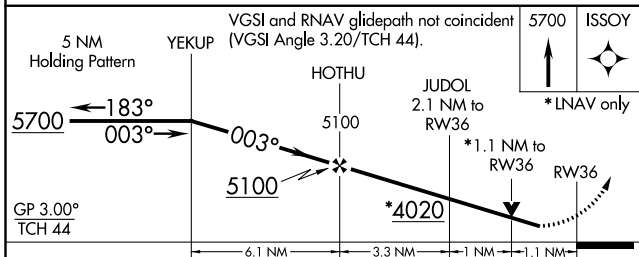
▼ Baro-VNAV NA when using Lamar altimeter setting. For uncompensated Baro-VNAV systems, LNAV/VNAV NA below -21°C (-5°F) or above 54°C (130°F). DME/DME RNP-0.3 NA.
▲ Helicopter visibility reduction below 3/4 SM NA. Circling to Rwy 13-31 NA at night. VDP NA with Lamar altimeter setting. When local altimeter setting not received, use Lamar altimeter setting and increase all DA 157 feet and all MDA 160 feet; increase LPV all Cats and LNAV/VNAV all Cats visibility 1/2 mile, LNAV Cat C and Circling Cat B visibility 1/4 mile, and Circling Cat C visibility 3/4 mile.

MISSED APPROACH: Climb to 5700 direct ISSOY and hold.

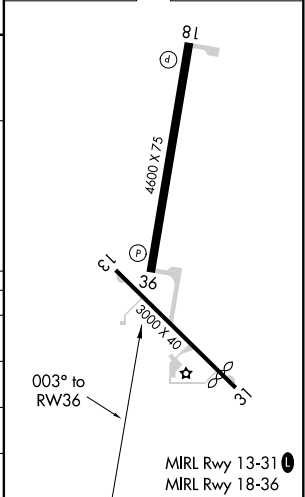
AWOS-3 119.975	DENVER CENTER 133.4 377.175	UNICOM 122.8 (CTAF) 0
--------------------------	---------------------------------------	---------------------------------



ELEV 3326	TDZE 3318
-----------	-----------



CATEGORY	A	B	C	D
LPV DA	3568-1 250 (300-1)			NA
LNAV/VNAV DA	3778-1 3/4 460 (500-1 3/4)			NA
LNAV MDA	3740-1	422 (500-1)	3740-1 1/4 422 (500-1 1/4)	NA
CIRCLING	3760-1 434 (500-1)	3980-1 654 (700-1)	3980-1 3/4 654 (700-1 3/4)	NA



NC-2, 09 SEP 2021 to 07 OCT 2021

NC-2, 09 SEP 2021 to 07 OCT 2021