

| | | | |
|--|------------------------|-----------------------------|---|
| WAAS CH 90537 W03A | APP CRS 032° | Rwy Idg TDZE Apt Elev | 5598 5157 5193 |
|--|------------------------|-----------------------------|---|

RNAV (GPS) RWY 3

BLAKE FLD (A.JZ)

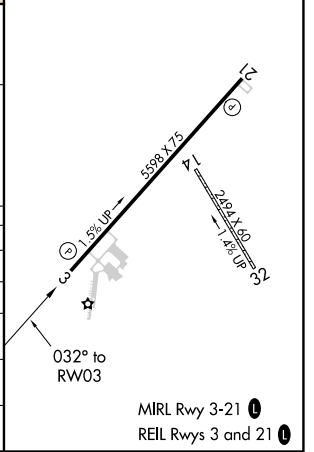
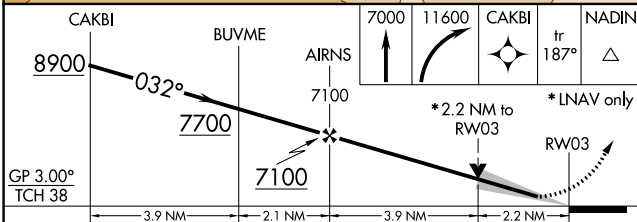
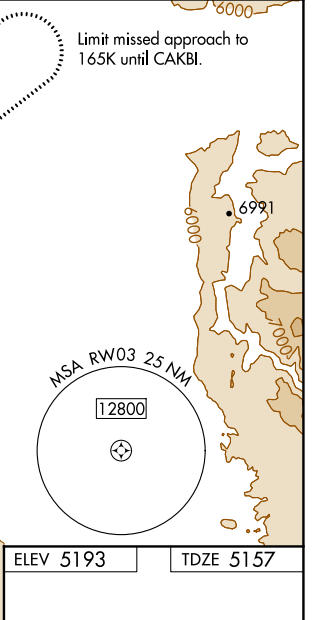
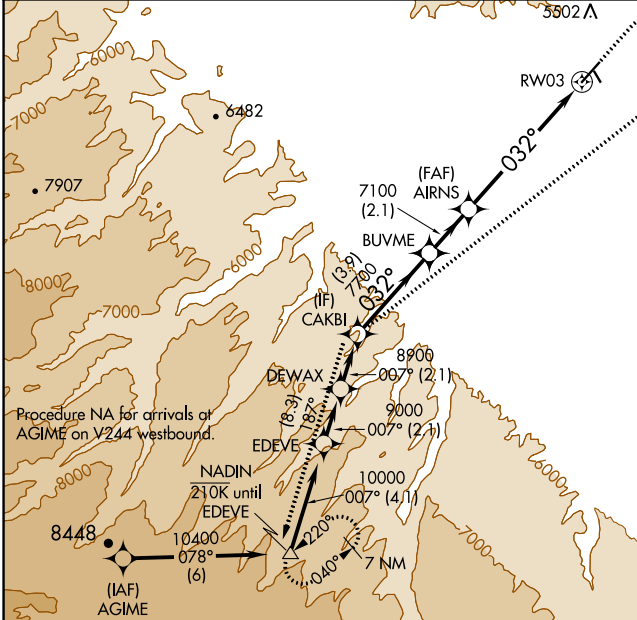
RNP APCH.

▼ Baro-VNAV NA when using Montrose altimeter setting. For uncompensated Baro-VNAV systems, procedure NA below -25°C or above 54°C. When local altimeter setting not received, use Montrose altimeter setting: increase #LPV DA to 5529 feet and visibility all Cats 3/8 SM, increase LPV DA to 5670 feet and visibility all Cats 1/2 SM, increase LNAV/VNAV DA to 5979 feet and visibility all Cats 1/2 SM. Increase all MDA 140 feet and visibility Cat B 1/4 SM, Cat C 1/2 SM and Circling Cat A 1/4 SM. VDP NA when using Montrose altimeter setting. Circling NA to Rwy's 14 and 32.

Missed approach requires minimum climb of 250 feet per NM to 6900.

MISSED APPROACH: Climb to 7000 then climbing right turn to 11600 direct CAKBI and on track 187° to NADIN and hold, continue climb-in-hold to 11600.

| | | |
|------------------------|--------------------------------------|-------------------------------|
| AWOS-3 134.0 | DENVER CENTER 127.1 343.65 | UNICOM 122.8 (CTAF) |
|------------------------|--------------------------------------|-------------------------------|



| CATEGORY | A | B | C | D |
|-------------------|-----------------------|---------------------------|-------------------------|----|
| #LPV DA | 5407-1 | 250 (300-1) | | NA |
| LPV DA | 5548-1½ | 391 (400-1½) | | NA |
| LNAV/VNAV DA | 5857-2 | 700 (700-2) | | NA |
| LNAV MDA | 5840-1 | 683 (700-1) | 5840-2 683 (700-2) | NA |
| C CIRCLING | 5900-1 707 (800-1) | 6340-1½ 1147 (1200-1½) | 6680-3 1487 (1500-3) | NA |

SW-1, 09 SEP 2021 to 07 OCT 2021

SW-1, 09 SEP 2021 to 07 OCT 2021