

WAAS CH <b>52885</b> <b>W36A</b>	APP CRS <b>357°</b>	Rwy Idg TDZE <b>1711</b> Apt Elev <b>1711</b>	<b>6536</b>
----------------------------------------	------------------------	-----------------------------------------------------	-------------

# RNAV (GPS) RWY 36

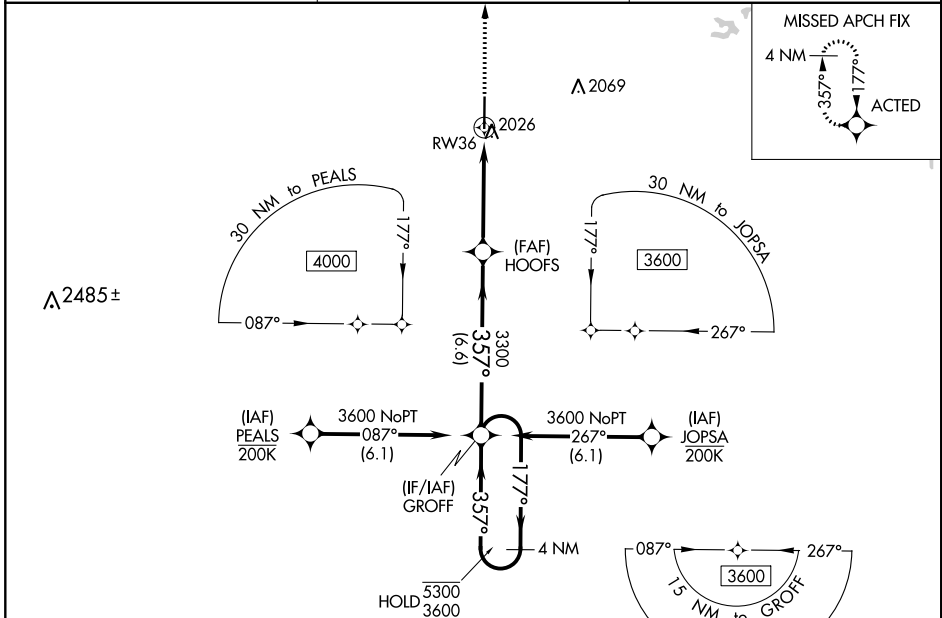
GREGORY M SIMMONS MEMORIAL (GZN)

RNP APCH.

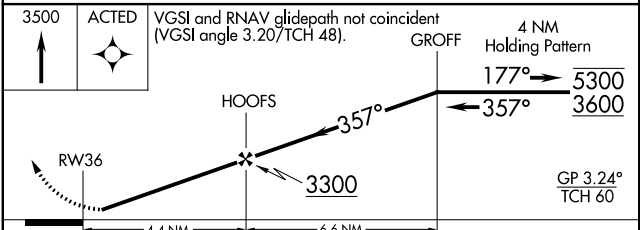
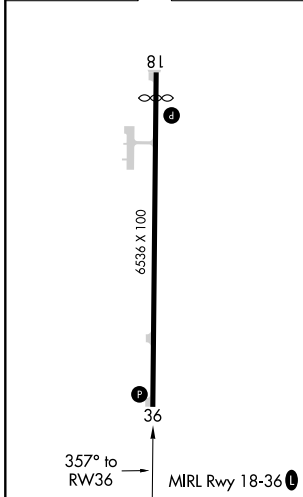
▼ Circling NA east of Rwy 18-36. Baro-VNAV NA when using Breckenridge altimeter setting. For uncompensated Baro-VNAV systems, LNAV/VNAV NA below -18°C or above 54°C. When local altimeter setting not received, use Breckenridge altimeter setting; Increase all DAs 111 feet and LNAV/VNAV visibility all Cats to 1¼ SM; increase all MDAs 120 feet and visibility Cat C to 2 SM. Rwy 36 helicopter visibility reduction below 1 SM NA.

MISSED APPROACH: Climb to 3500 direct ACTED and hold.

AWOS-3PT <b>118.0</b>	ABILENE APP CON <b>125.0 338.3</b>	(CTAF) <b>122.9</b>
--------------------------	---------------------------------------	------------------------



ELEV 1711	<b>D</b>	TDZE 1711
-----------	----------	-----------



CATEGORY	A	B	C	D
LPV DA	1961-1 250 (300-1)			NA
LNAV/VNAV DA	2176-1¾ 465 (500-1¾)			NA
LNAV MDA	2280-1 569 (600-1)		2280-1½ 569 (600-1½)	NA
<b>C</b> CIRCLING	2280-1 569 (600-1)		2280-1½ 569 (600-1½)	NA

SC-2, 09 SEP 2021 to 07 OCT 2021

SC-2, 09 SEP 2021 to 07 OCT 2021