

VORTAC UKW 117.15 Chan 118 (Y)	APP CRS 175°	Rwy Idg TDZE 842 Apt Elev 864	5005 842 864
--	------------------------	---	---

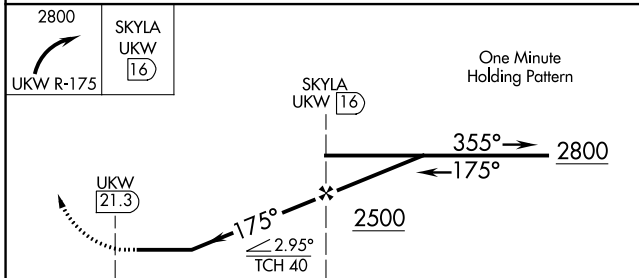
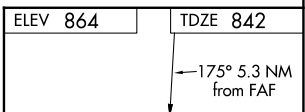
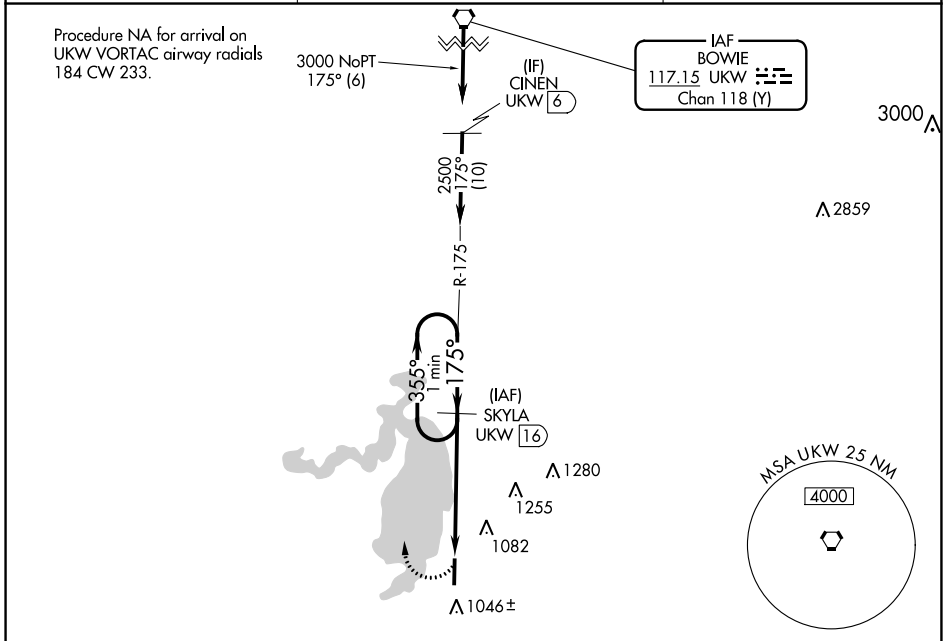
VOR/DME RWY 18

BRIDGEPORT MUNI (XBP)

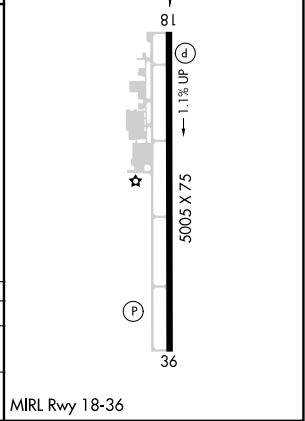
⚠ Visibility reduction by helicopters NA. When local altimeter setting not received, use Decatur altimeter setting and increase all MDA 60 feet.

⚠ MISSED APPROACH: Climbing right turn to 2800 via UKW VORTAC R-175 to SKYLA/UKW 16 DME and hold.

AWOS-3PT 119.225	FORT WORTH CENTER 127.0 360.6	UNICOM 123.0 (CTAF)
----------------------------	---	-------------------------------



CATEGORY	A	B	C	D
S-18	1440-1 598 (600-1)	1440-1¼ 598 (600-1¼)		NA
C CIRCLING	1480-1 616 (700-1)	1480-1¼ 616 (700-1¼)		NA



SC-2, 23 MAR 2023 to 20 APR 2023

SC-2, 23 MAR 2023 to 20 APR 2023