

(LFK3.LFK) 21280

AL-6453 (FAA)

TEXAS GULF COAST RGNL (L.B.X)
ANGLETON/LAKE JACKSON, TEXAS

LUFKIN THREE DEPARTURE

ASOS
119.925
CLNC DEL
125.2
CTAF
123.0
HOUSTON DEP CON
134.45 284.0

**TOP ALTITUDE:
ASSIGNED BY ATC**

LITTLE ROCK
113.9 LIT
Chan 86
N34°40.66'
W92°10.83'
L-18, H-6

NOTE: RADAR and DME required.
NOTE: For aircraft destined LIT or
overflying LIT or PXV.

LUFKIN
112.1 LFK
Chan 58
N31°09.75'
W94°43.01'

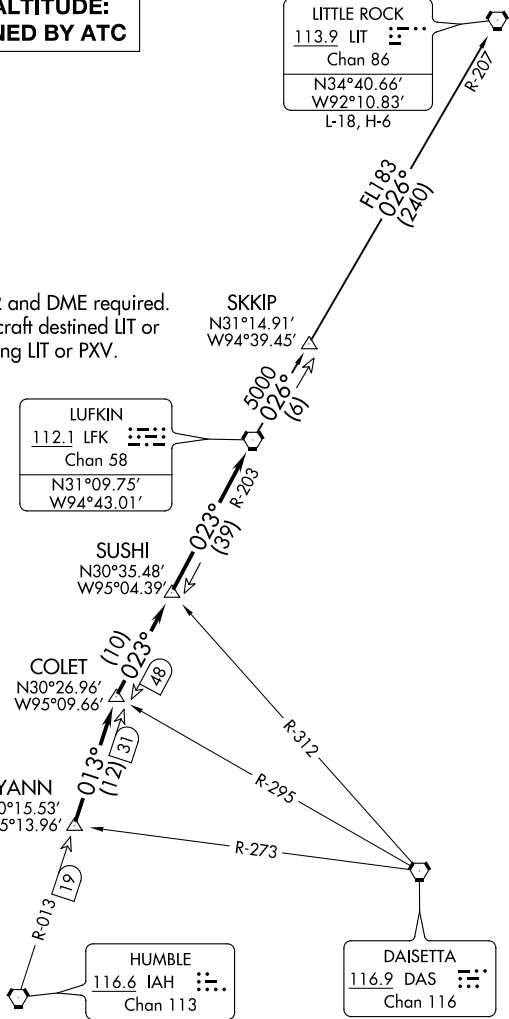
SUSHI
N30°35.48'
W95°04.39'

COLET
N30°26.96'
W95°09.66'

KYANN
N30°15.53'
W95°13.96'

HUMBLE
116.6 IAH
Chan 113

DAISETTA
116.9 DAS
Chan 116



TAKEOFF MINIMUMS
Rwys 17, 35: Standard.

NOTE: Chart not to scale.

(NARRATIVE ON FOLLOWING PAGE)

LUFKIN THREE DEPARTURE

(LFK3.LFK) 07OCT21

ANGLETON/LAKE JACKSON, TEXAS
TEXAS GULF COAST RGNL (L.B.X)

SC-5, 23 MAR 2023 to 20 APR 2023

SC-5, 23 MAR 2023 to 20 APR 2023