

WAAS CH 70316 W17A	APP CRS 175°	Rwy Idg 7000 TDZE 25 Apt Elev 25
--	------------------------	---

RNAV (GPS) RWY 17

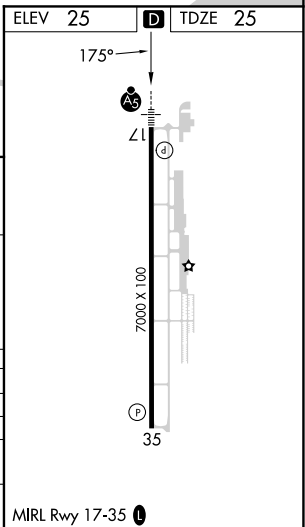
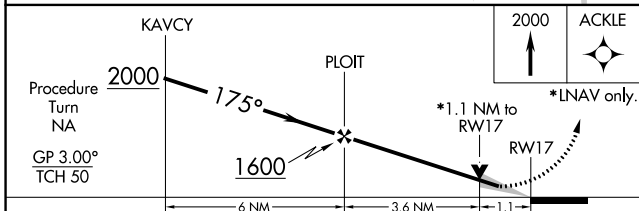
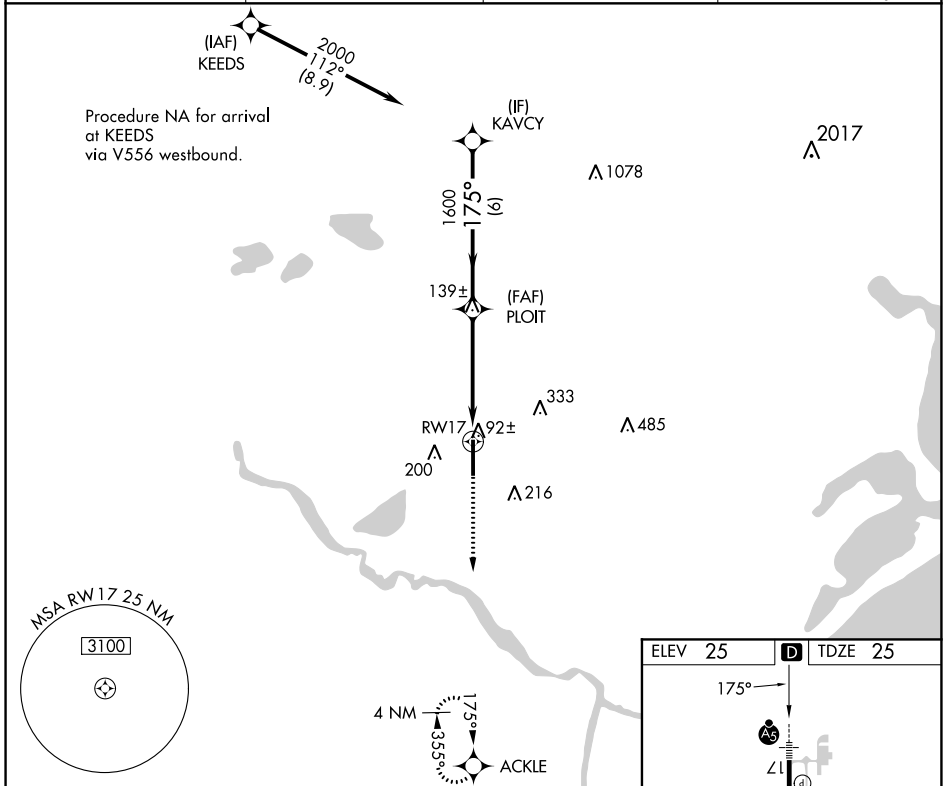
TEXAS GULF COAST RGNL (L.B.X)

⚠ DME/DME RNP-0.3 NA. Baro-VNAV NA below -16°C (4°F). When local altimeter setting not received, use William P. Hobby altimeter setting and increase all DAs/MDAs 100 feet and Circling Cat D visibility ¼ SM. Baro-VNAV and VDP NA when using William P. Hobby altimeter setting. Circling NA east of Rwy 17-35. For Inop MALSR, increase LPV visibility to 1 mile all Cats, LNAV Cat D visibility to 1¼ mile.



MISSED APPROACH:
Climb to 2000 direct
ACKLE and hold.

ASOS 119.925	HOUSTON APP CON 134.45 284.0	CLNC DEL 125.2	UNICOM 123.0 (CTAF) 1
------------------------	--	--------------------------	---------------------------------



CATEGORY	A	B	C	D
LPV DA		282-1/2	257 (300-1/2)	
LNAV/VNAV DA		360-3/4	335 (400-3/4)	
LNAV MDA		420-1/2	395 (400-1/2)	420-1 395 (400-1)
C CIRCLING	480-1/4 455 (500-1/4)	500-1/4 475 (500-1/4)	500-1/2 475 (500-1/2)	620-2 595 (600-2)

MIRL Rwy 17-35 1

SC-5, 23 MAR 2023 to 20 APR 2023

SC-5, 23 MAR 2023 to 20 APR 2023