

HI-ILS or LOC X RWY 34

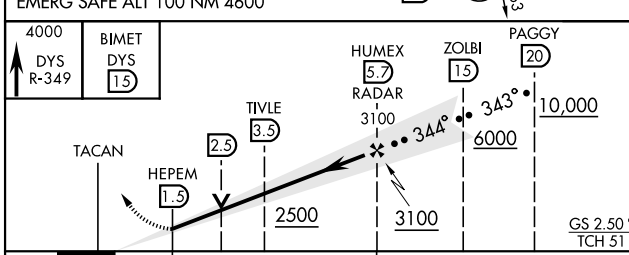
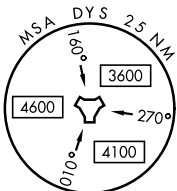
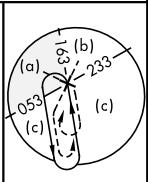
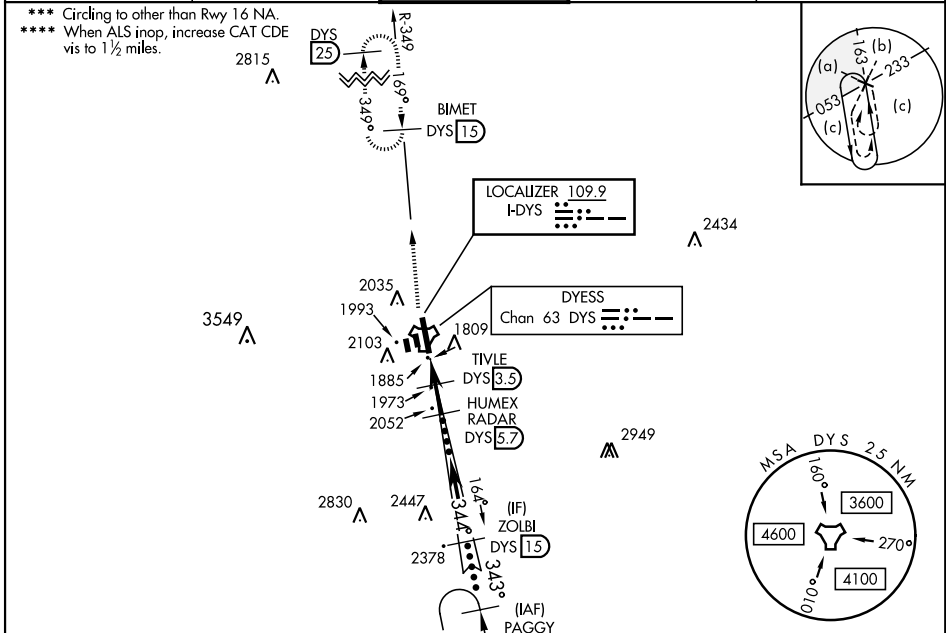
LOC I-DYS 109.9	APCH CRS 344°	Rwy Idg 13,500 TDZE 1788 Arprt Elev 1790
---------------------------	-------------------------	---

AL-2 [USAF]

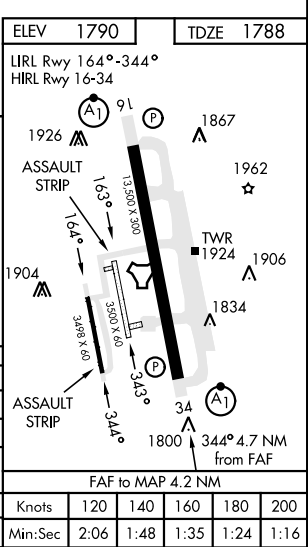
DYESS AFB (KDYS)

RADAR or DME required.	ALSF-1 	MISSED APPROACH: Climb to 4000 via DYS TACAN R-349 to BIMET and hold.
------------------------	------------	---

ATIS ★ 269.175	ABILENE APP CON 125.0 338.3 EAST 127.2 282.3 WEST	TOWER 133.0 257.675	GND CON 118.35 275.8	ASR
--------------------------	---	-------------------------------	--------------------------------	-----



CATEGORY	C	D	E
S-ILS 34 *	1988/24	200 (200-½)	
S-LOC 34 **	2240/45	452 (500-¾)	
CIRCLING ***	2460-1¼ 670 (700-1¾)	2460-2 670 (700-2)	2460-2¼ 670 (700-2¼)
WITHOUT LAST STEPDOWN FIX			
S-LOC 34 ****	2320/55	532 (600-1)	



SC-2, 22 FEB 2024 to 21 MAR 2024

SC-2, 22 FEB 2024 to 21 MAR 2024

HI-ILS or LOC X RWY 34