

HI-TACAN X RWY 34

TACAN Chan 63	APCH CRS 338°	Rwy ldg 13,500 TDZE 1788 Arprt Elev 1790
-------------------------	-------------------------	---

JAL-2 [USAF]

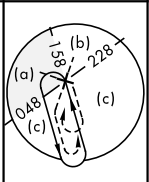
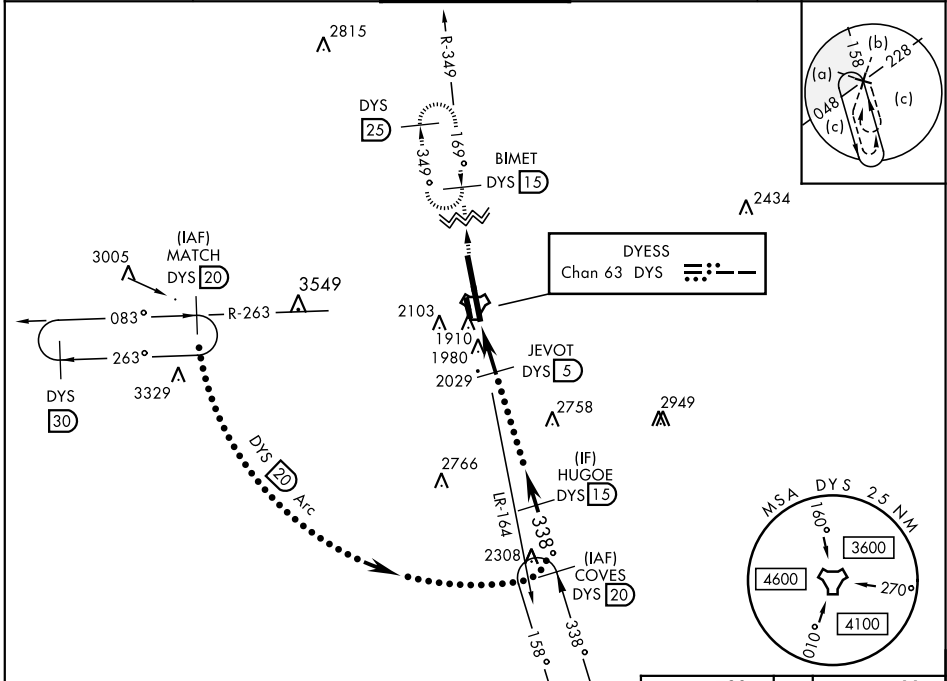
DYESS AFB (KDYS)

* When ALS inop, increase CAT CDE vis to 1 3/8 miles.
 ** Circling to other than Rwy 16 NA.



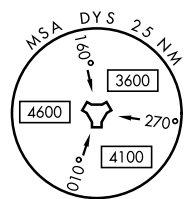
MISSED APPROACH: Climb to 4000 via
 DYS TACAN R-349 to BIMET and hold.

ATIS ★ 269.175	ABILENE APP CON 125.0 338.3 EAST 127.2 282.3 WEST	DYESS TOWER 133.0 257.675	GND CON 118.35 275.8	ASR
--------------------------	---	-------------------------------------	--------------------------------	-----



2434

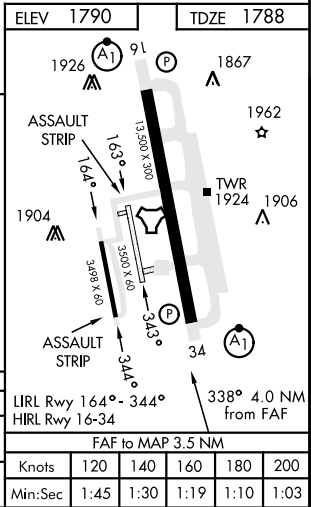
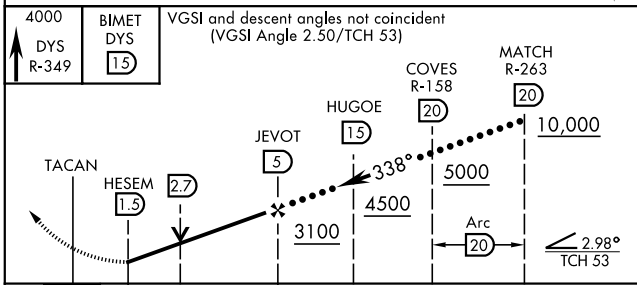
DYESS
Chan 63 DYS



SC-2, 22 FEB 2024 to 21 MAR 2024

SC-2, 22 FEB 2024 to 21 MAR 2024

EMERG SAFE ALT 100 NM 4600



4000 DYS R-349	BIMET DYS 15	VGSI and descent angles not coincident (VGSI Angle 2.50/TCH 53)		
TACAN	HESEM 1.5	JEVOT 5	HUGOE 15	COVES R-158 20
				MATCH R-263 20
				10,000
				5000
				3100
				4500
				338°
				2.98° TCH 53
CATEGORY	C		D	E
S-34 *	2280/50		492	(500-1)
CIRCLING **	2460-1 3/4 670 (700-1 3/4)	2460-2 670 (700-2)	2460-2 1/4 670 (700-2 1/4)	

LIRL Rwy 164° - 344°		338° 4.0 NM from FAF			
FAF to MAP 3.5 NM					
Knots	120	140	160	180	200
Min:Sec	1:45	1:30	1:19	1:10	1:03

HI-TACAN X RWY 34