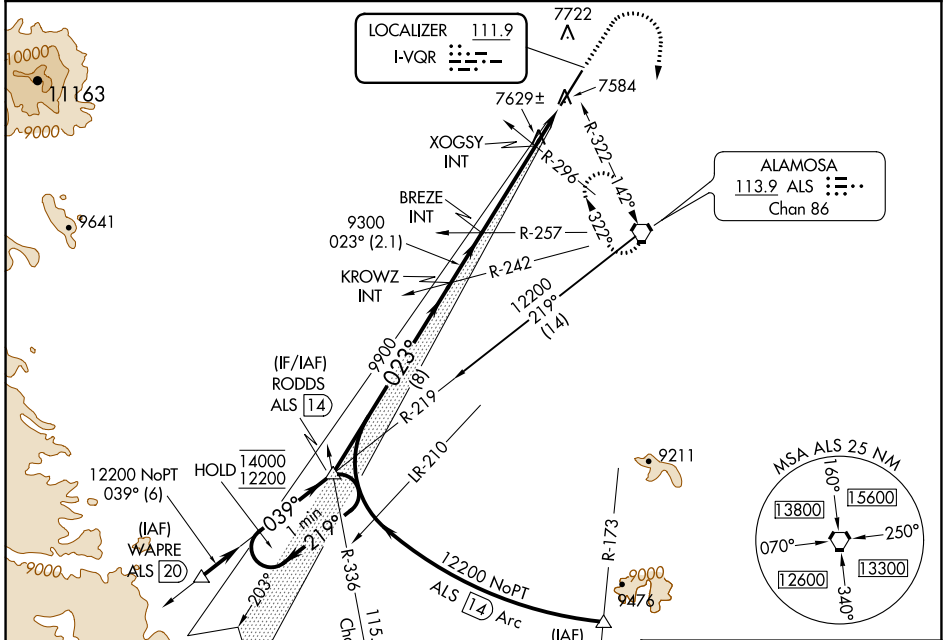


LOC I-VQR <b>111.9</b>	APP CRS <b>023°</b>	Rwy ldg <b>8519</b>
		TDZE <b>7540</b>
		Apt Elev <b>7540</b>

**ILS or LOC RWY 2**  
SAN LUIS VALLEY RGNL/BERGMAN FLD (ALS)

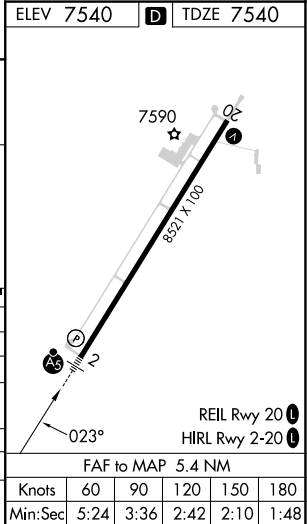
<p><b>NA</b> For inop ALS, increase S-LOC 2 Cats C/D visibility to 1 3/8 SM.</p> <p><b>-26°C</b></p>	<p><b>MALSR</b></p>	<p><b>MISSED APPROACH:</b> Climb to 8700 then climbing right turn to 11000 direct ALS VORTAC and hold, continue climb in hold to 11000.</p>
--	---------------------	---

<b>ASOS</b> <b>135.175</b>	<b>DENVER CENTER</b> <b>128.375 379.95</b>	<b>UNICOM</b> <b>122.8 (CTAF)</b>
-------------------------------	---	--------------------------------------



Procedure NA for arrivals at WAPRE on V368 southwest bound.

One Minute Holding Pattern	RODDES ALS 14	KROWZ INT	BREZE INT	XOGSY INT
	14000 ← 219°	12200 039°	9900	9300
GS 3.00° TCH 48	8 NM	2.1 NM	3.6 NM	1.7 NM
CATEGORY	A	B	C	D
S-ILS 2	7740-1/2		200 (200-1/2)	
S-LOC 2	8040-1/2 500 (500-1/2)		8040-1 500 (500-1)	
CIRCLING	8040-1 500 (500-1)		8080-1 1/2 540 (600-1/2) 8100-2 560 (600-2)	
XOGSY FIX MINIMUMS (DUAL VOR RECEIVERS REQUIRED)				
S-LOC 2	7880-1/2 340 (400-1/2)			
CIRCLING	8040-1 500 (500-1)		8080-1 1/2 540 (600-1/2) 8100-2 560 (600-2)	



SW-1, 22 FEB 2024 to 21 MAR 2024

SW-1, 22 FEB 2024 to 21 MAR 2024