

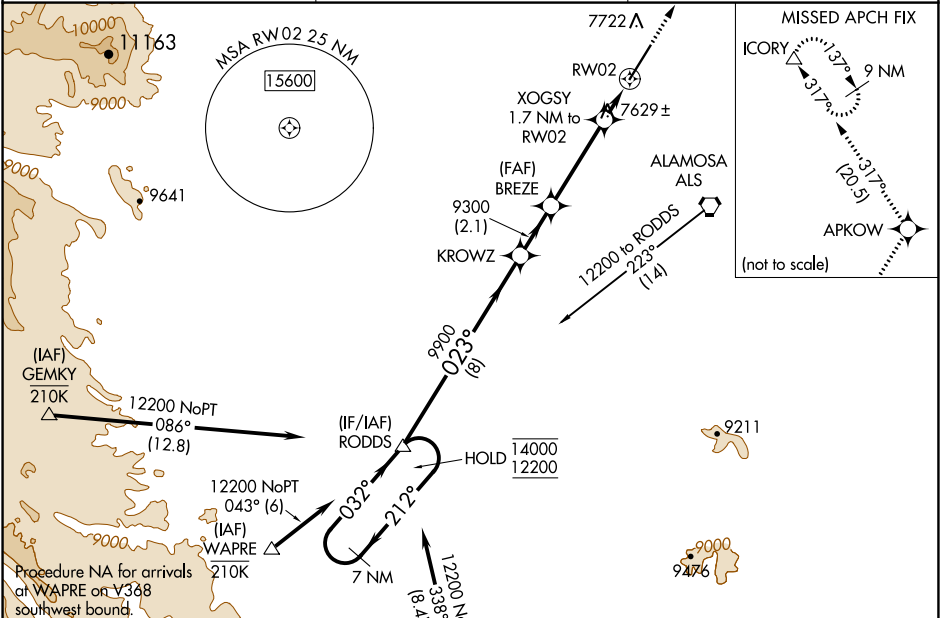
WAAS CH 90410 W02A	APP CRS 023°	Rwy Idg TDZE 7540 Apt Elev 7540
--	------------------------	---

RNAV (GPS) RWY 2

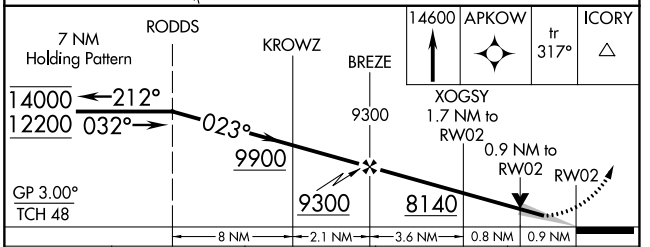
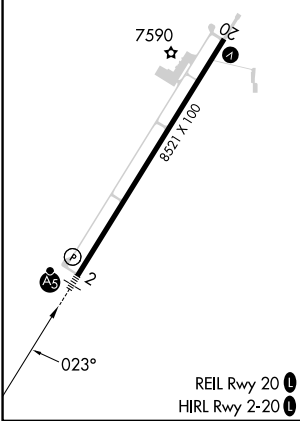
SAN LUIS VALLEY RGNL/BERGMAN FLD (ALS)

RNP APCH-GPS. ▼ For uncompensated Baro-VNAV systems, LNAV/VNAV NA below -31°C or above 54°C. For inop ALS, increase LNAV/VNAV all Cats visibility to ¾ SM. ⚠ -26°C	MALSR AS	MISSED APPROACH: Climb to 14600 direct APKOW and on track 317° to ICORY and hold, continue climb-in-hold to 14600.
--	-------------	--

ASOS 135.175	DENVER CENTER 128.375 379.95	UNICOM 122.8 (CTAF) 0
------------------------	--	---------------------------------



ELEV 7540	D	TDZE 7540
-----------	----------	-----------



CATEGORY	A	B	C	D
LPV DA		7740-½	200 (200-½)	
LNAV/VNAV DA		7790-½	250 (300-½)	
LNAV MDA		7880-½	340 (400-½)	
CIRCLING	8040-1	500 (500-1)	8080-1½ 540 (600-1½)	8100-2 560 (600-2)

SW-1, 22 FEB 2024 to 21 MAR 2024

SW-1, 22 FEB 2024 to 21 MAR 2024