

LOC I-AMA <b>110.3</b>	APP CRS <b>038°</b>	Rwy Idg <b>13502</b> TDZE <b>3607</b> Apt Elev <b>3607</b>
---------------------------	------------------------	---

# ILS or LOC RWY 4

RICK HUSBAND AMARILLO INTL (AMA)

ADF or DME required.

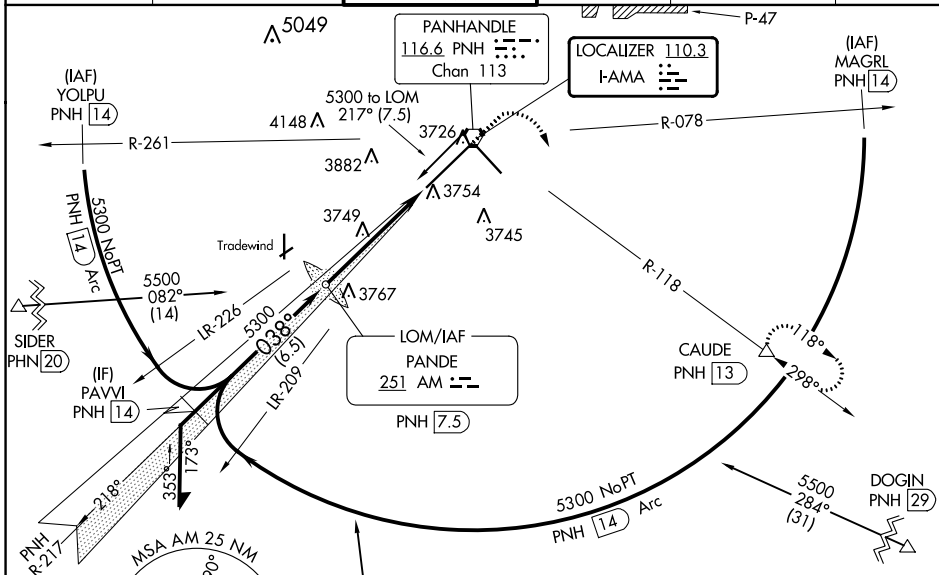
**ASR** When local altimeter setting not received, use Borger altimeter setting and increase S-ILS 4 DA to 3960 feet and all visibilities to RVR 3000. Increase all MDAs 160 feet and S-LOC 4 visibility Cat C/D/E to RVR 6000 and Circling visibility Cat C/D 1/2 SM. For inop ALS, increase visibility S-ILS 4 Cat E to 4000 RVR and S-LOC 4 Cat C/D/E to RVR 6000. For inop ALS when using Borger altimeter setting, increase visibility S-ILS 4 all Cats to 5500 and S-LOC 4 Cat C/D/E to 1 1/2 SM. \* RVR 1800 authorized with use of FD or AP or HUD to DA (NA when using Borger altimeter setting).

MALSR



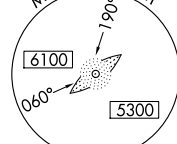
MISSED APPROACH:  
Climb to 4100 then climbing right turn to 5000 on PNH VORTAC R-118 to CAUDE/PNH 13 DME and hold.

ATIS <b>118.85 350.3</b>	AMARILLO APP CON* <b>119.5 307.0</b>	AMARILLO TOWER* <b>118.3(CTAF) 257.9</b>	GND CON <b>121.9 348.6</b>	CLNC DEL <b>121.65 239.275</b>	UNICOM <b>122.95</b>
-----------------------------	---	---	-------------------------------	-----------------------------------	-------------------------

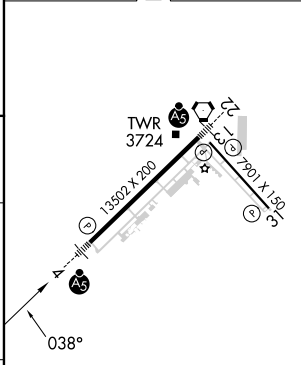
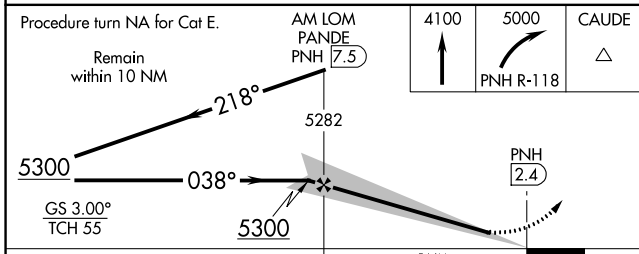


SC-2, 22 FEB 2024 to 21 MAR 2024

SC-2, 22 FEB 2024 to 21 MAR 2024



ELEV 3607	D	TDZE 3607
-----------	---	-----------



CATEGORY	A	B	C	D	E	REIL Rwy 13					
S-ILS 4*	3807/24 200 (200-1/2)					HIRL Rws 4-22 and 13-31					
S-LOC 4	4000/24	393 (400-1/2)	4000/35	393 (400-3/4)		FAF to MAP 5 NM					
CIRCLING	4080-1	473 (500-1)	4240-1 3/4	4280-2 1/4	4460-3	Knots	60	90	120	150	180
			633 (700-1 3/4)	673 (700-2 1/4)	853 (900-3)	Min:Sec	5:00	3:20	2:30	2:00	1:40