

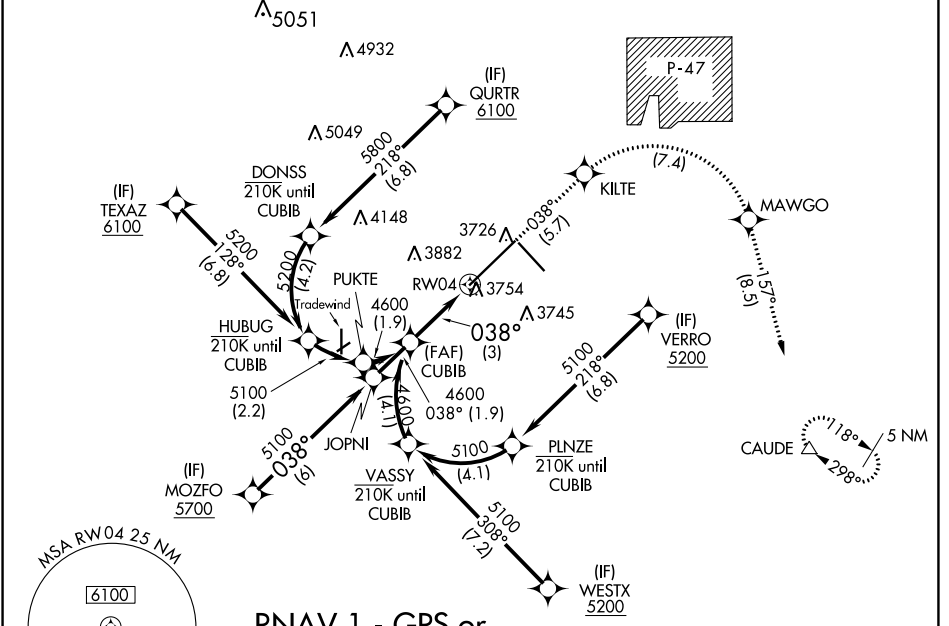
| | | |
|-------------|----------|--------------|
| APP CRS | Rwy Idg | 13502 |
| 038° | TDZE | 3607 |
| | Apt Elev | 3607 |

RNAV (RNP) Z RWY 4

RICK HUSBAND AMARILLO INTL (AMA)

| | | | |
|-----|---|--------|---|
| ASR | For uncompensated Baro-VNAV systems, procedure NA below -14°C (7°F) or above 53°C (128°F). RF required. GPS required. For inop ALS, increase RNP 0.30 all Cats visibility to 1 1/2 SM. | MALSRS | MISSED APPROACH: (Do not exceed 185K until MAWGO) Climb to 5400 on track 038° to KILTE, right turn to MAWGO, then track 157° to CAUDE and hold. |
| | | | |

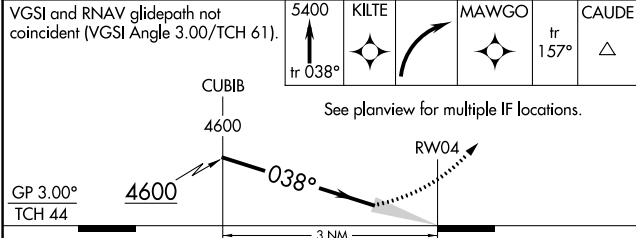
| | | | | | |
|---------------------|--------------------|--------------------------|--------------------|-----------------------|---------------|
| ATIS | AMARILLO APP CON* | AMARILLO TOWER* | GND CON | CLNC DEL | UNICOM |
| 118.85 350.3 | 119.5 307.0 | 118.3(CTAF) 257.9 | 121.9 348.6 | 121.65 239.275 | 122.95 |



SC-2, 22 FEB 2024 to 21 MAR 2024

SC-2, 22 FEB 2024 to 21 MAR 2024

| | |
|-----------|-----------|
| ELEV 3607 | TDZE 3607 |
|-----------|-----------|



| CATEGORY | A | B | C | D |
|-------------|---|---------|---------------|---|
| RNP 0.12 DA | | 3969/40 | 362 (400-3/4) | |
| RNP 0.30 DA | | 4019/50 | 412 (500-1) | |

AUTHORIZATION REQUIRED

