

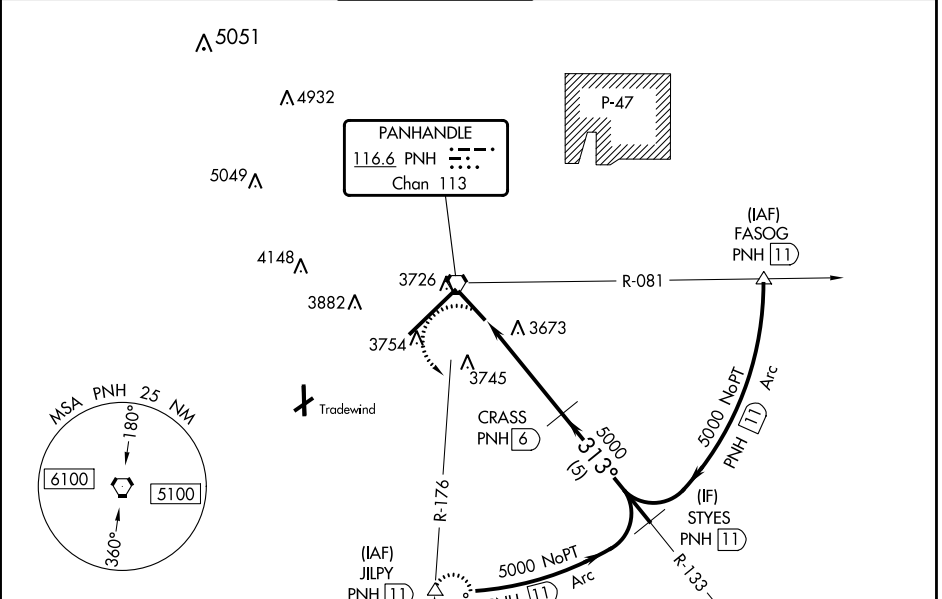
VORTAC PNH 116.6 Chan 113	APP CRS 313°	Rwy Idg TDZE Apt Elev 7901 3601 3607
---	------------------------	--

VOR RWY 31

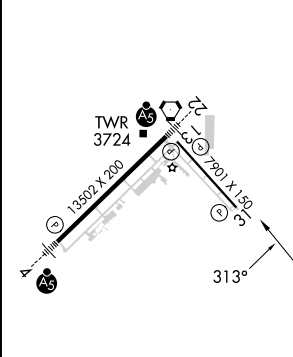
RICK HUSBAND AMARILLO INTL (AMA)

DME required.		MISSED APPROACH: Climbing left turn to 5300 on PNH VORTAC R-176 to JILPY/11 DME and hold.			
ATIS 118.85 350.3	AMARILLO APP CON* 119.5 307.0	AMARILLO TOWER* 118.3(CTAF) 257.9	GND CON 121.9 348.6	CLNC DEL 121.65 239.275	UNICOM 122.95

ATIS 118.85 350.3	AMARILLO APP CON* 119.5 307.0	AMARILLO TOWER* 118.3(CTAF) 257.9	GND CON 121.9 348.6	CLNC DEL 121.65 239.275	UNICOM 122.95
-----------------------------	---	---	-------------------------------	-----------------------------------	-------------------------



ELEV 3607	D	TDZE 3601
------------------	----------	------------------



REIL Rwy 13 **1**
HIRL Rwys 4-22 and 13-31 **1**
FAF to MAP 4.4 NM

Knots	60	90	120	150	180
Min:Sec	4:24	2:56	2:12	1:46	1:28

5300 PNH R-176	JILPY △	VGSI and descent angles not coincident (VGSI Angle 3.00°/TCH 52).	CRASS PNH 6	STYES PNH 11	
PNH 1.6	PNH 2.6	5000	5000	5000	
1 NM	3.4 NM	5 NM			
≤ 2.93° TCH 40					
313°					
CATEGORY	A	B	C	D	E
S-31	3960-1	359 (400-1)	3960-1¼	359 (400-1¼)	
C CIRCLING	4080-1	473 (500-1)	4240-1¾ 633 (700-1¾)	4280-2¼ 673 (700-2¼)	4460-3 853 (900-3)

SC-2, 22 FEB 2024 to 21 MAR 2024

SC-2, 22 FEB 2024 to 21 MAR 2024