

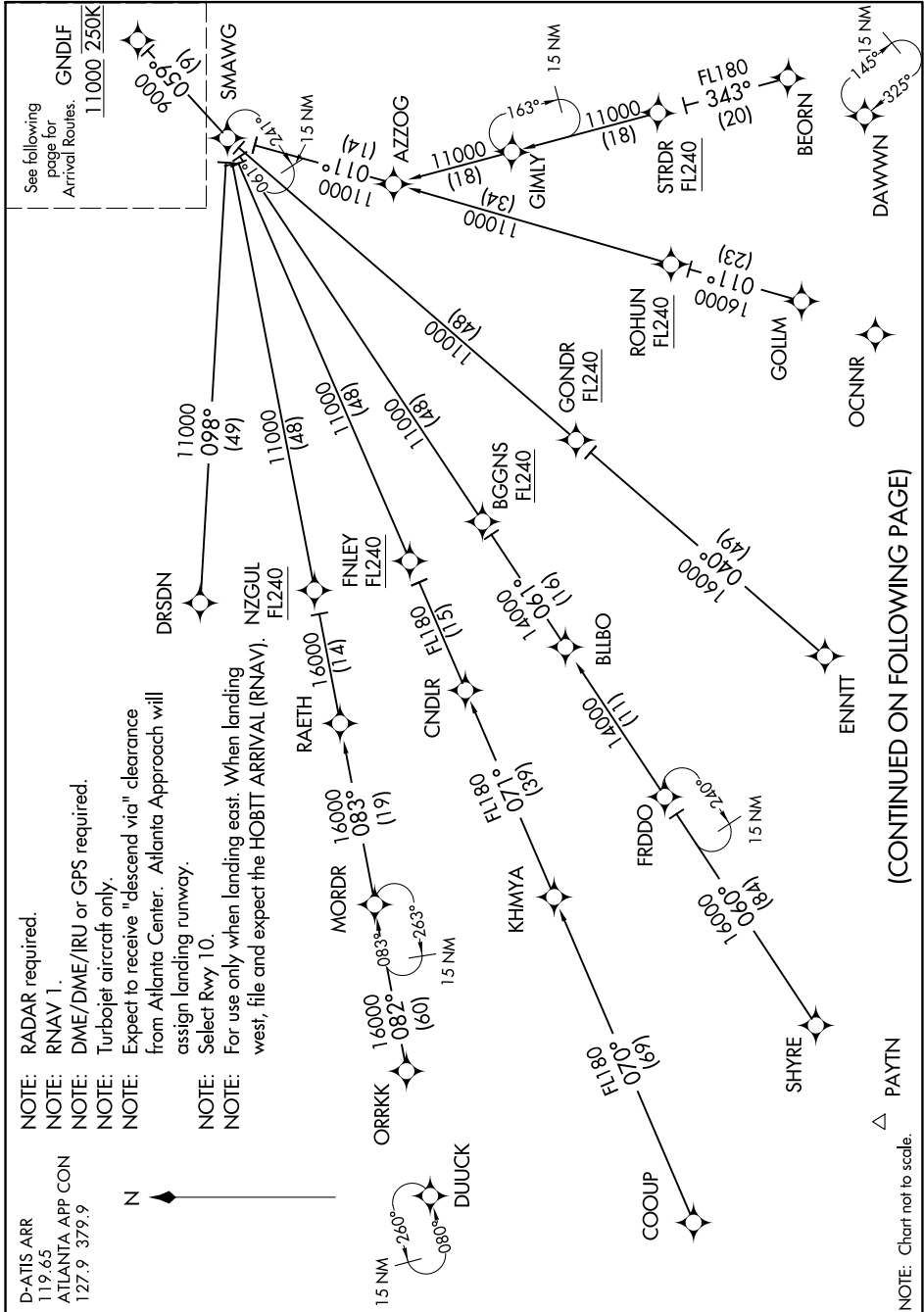
GNDLF TWO ARRIVAL(RNAV) Transition Routes

SE-4, 22 FEB 2024 to 21 MAR 2024

D-ATIS ARR
119.65
ATLANTA APP CON
127.9 379.9



- NOTE: RADAR required.
- NOTE: RNAV 1.
- NOTE: DME/DME/IRU or GPS required.
- NOTE: Turbojet aircraft only.
- NOTE: Expect to receive "descend via" clearance from Atlanta Center. Atlanta Approach will assign landing runway.
- NOTE: Select Rwy 10.
- NOTE: For use only when landing east. When landing west, file and expect the HOBTT ARRIVAL (RNAV).



△ PAYTN
NOTE: Chart not to scale.

(CONTINUED ON FOLLOWING PAGE)

SE-4, 22 FEB 2024 to 21 MAR 2024

GNDLF TWO ARRIVAL (RNAV) Transition Routes