

ATLANTA, GEORGIA

AL-26 (FAA)

23334

LOC/DME I-FSQ 108.5 Chan 22	APP CRS 275°	Rwy ldg TDZE Apt Elev	8865 999 1026
------------------------------------------	------------------------	-----------------------------	------------------------------------------

ILS RWY 27L (SA CAT I)

HARTSFIELD-JACKSON ATLANTA INTL (ATL)

DME or RADAR required.
RADAR required for procedure entry.

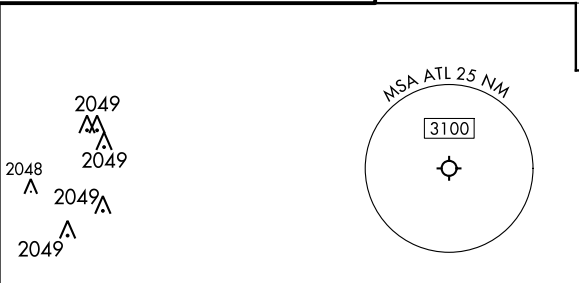
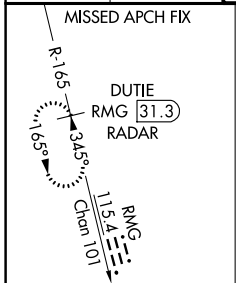
Simultaneous approach authorized.
Requires specific OPSPEC, MSPEC, or LOA approval.

ALSF-2

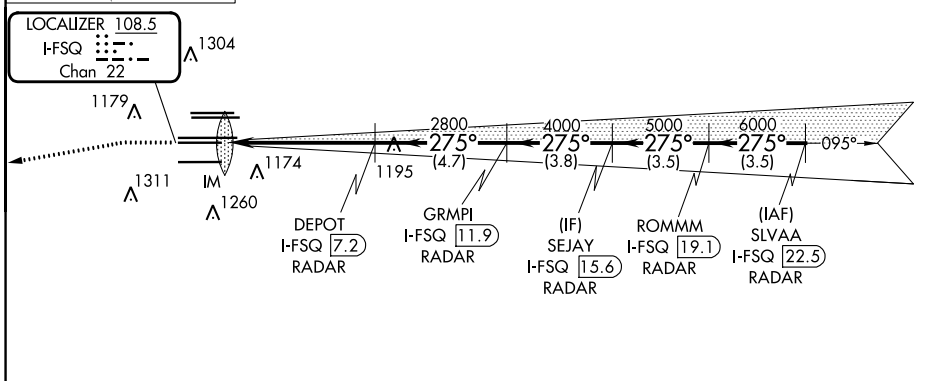


MISSED APPROACH: Climb to 1500 then climbing left turn to 4000 on heading 265° and RMG VORTAC R-165 to DUTIE/RMG 31.3 DME/RADAR and hold.

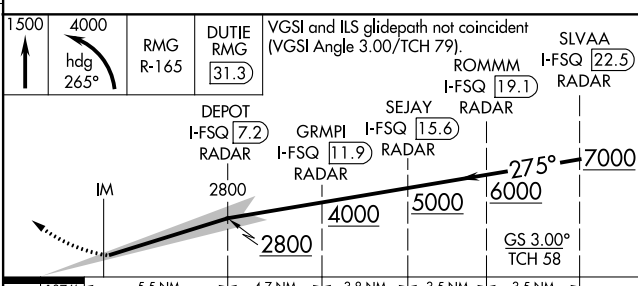
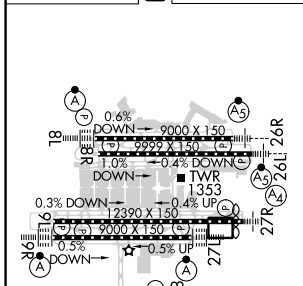
D-ATIS ARR 119.65	ATLANTA APP CON DEP 125.55	ATLANTA TOWER 8L-26R 8R-26L 9L-27R 9R-27L 10-28 119.1 125.325 123.85 119.3 119.5 254.4	ALL RWYS 121.9	GND CON (8L-26R,8R-26L) (9L-27R,9R-27L) 10-28 121.75 121.65 254.4	ALL RWYS 254.4
-----------------------------	-----------------------------------------	-----------------------------------------------------------------------------------------------------	-----------------------------	--------------------------------------------------------------------------------	-----------------------------



CLNC DEL 118.1	CPDLC
-----------------------------	-------



ELEV 1026	D	TDZE 999
-----------	----------	----------



CATEGORY	A	B	C	D
S-ILS 27L	RA 214/14 150 DA 1149			

SA CATEGORY I ILS- SPECIAL AIRCREW & AIRCRAFT CERTIFICATION REQUIRED

HIRL all Rwys
TDZ/CL Rwys 8L, 9R,
10, 26R, 27L and 28

ATLANTA, GEORGIA
Amdt 19 22APR21

HARTSFIELD-JACKSON ATLANTA INTL (ATL)
33°38'N-84°26'W

ILS RWY 27L (SA CAT I)

SE-4, 22 FEB 2024 to 21 MAR 2024

SE-4, 22 FEB 2024 to 21 MAR 2024