

| | | |
|---|------------------------|--|
| LOC/DME I-PKU 111.75 Chan 54(Y) | APP CRS 275° | Rwy ldg TDZE Apt Elev 900 998 1026 |
|---|------------------------|--|

ILS RWY 28 (SA CAT I)

HARTSFIELD-JACKSON ATLANTA INTL (ATL)

RNAV 1-GPS or RADAR required for procedure entry.
From TERII: RNAV 1-GPS required. DME or RADAR required.

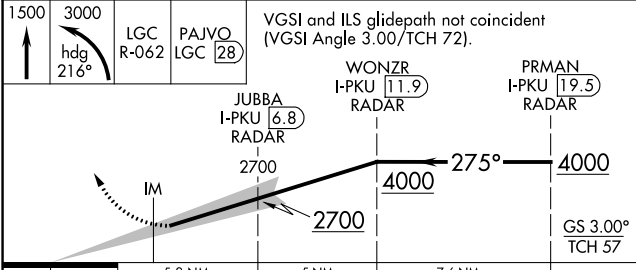
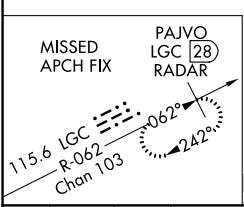
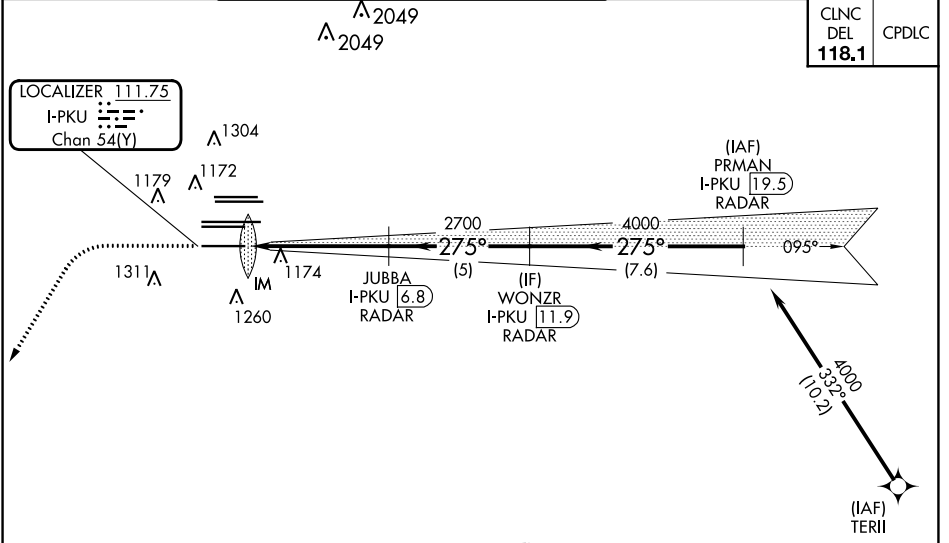
Simultaneous approach authorized.
Requires specific OPSPEC, MSPEC, or LOA approval.

ALSIF-2

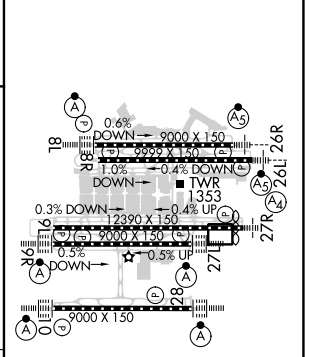
MISSED APPROACH: Climb to 1500 then climbing left turn to 3000 on heading 216° and LGC VORTAC R-062 to PAJVO/LGC 28 DME/RADAR and hold.

| | | | | | |
|-----------------------------|--------------------|---|--|-----------------------|---------------------|
| D-ATIS ARR 119.65 | ATLANTA APP CON | ATLANTA TOWER 8L-26R 8R-26L 9L-27R 9R-27L 10-28 RWYS | ALL RWYS (8L-26R,8R-26L) (9L-27R,9R-27L) 10-28 RWYS | GND CON 10-28 RWYS | ALL RWYS |
| DEP 125.55 | 127.9 379.9 | 119.1 125.325 123.85 119.3 119.5 254.4 | 121.9 | 121.75 | 121.65 254.4 |

| | |
|-----------------------------|-------|
| CLNC DEL 118.1 | CPDLC |
|-----------------------------|-------|



| | |
|-----------|----------|
| ELEV 1026 | TDZE 998 |
|-----------|----------|



SA CATEGORY I ILS - SPECIAL AIRCREW & AIRCRAFT CERTIFICATION REQUIRED

RA 264/14 150 DA 1148

HIRL all Rwys
TDZ/CL Rwys 8L, 9R, 10, 26R, 27L and 28

SE-4, 22 FEB 2024 to 21 MAR 2024

SE-4, 22 FEB 2024 to 21 MAR 2024