

ATLANTA, GEORGIA

AL-26 (FAA)

23334

LOC/DME I-FUN <b>108.9</b> Chan <b>26</b>	APP CRS <b>095°</b>	Rwy Idg TDZE Apt Elev	<b>9000</b> <b>1026</b> <b>1026</b>
---	------------------------	-----------------------------	---

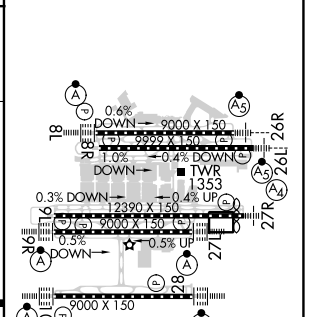
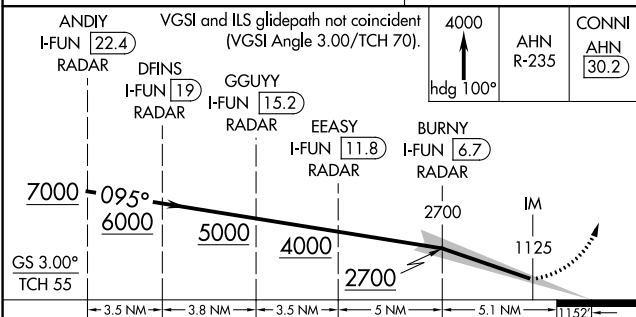
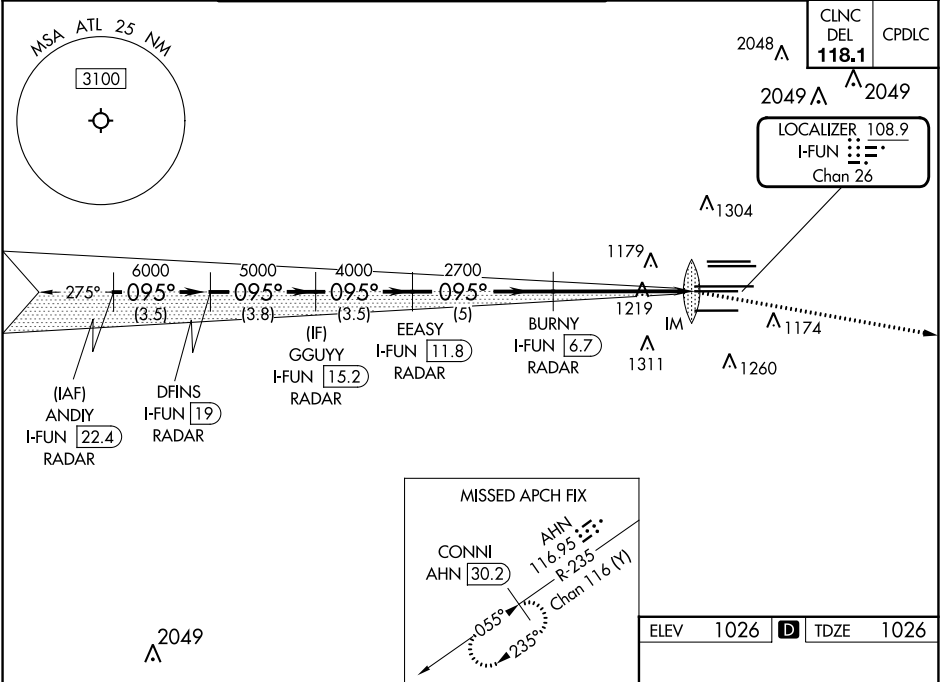
# ILS RWY 9R (CAT II & III)

HARTSFIELD-JACKSON ATLANTA INTL (ATL)

RADAR required for procedure entry, DME.  
 Simultaneous approach authorized.

ALSF-2  
 MISSED APPROACH: Climb to 4000 on heading 100° and AHN VOR/DME R-235 to CONNI/AHN 30.2 DME and hold.

D-ATIS ARR <b>119.65</b>	ATLANTA APP CON <b>127.9 379.9</b>	ATLANTA TOWER 8L-26R 8R-26L 9L-27R 9R-27L 10-28 RWYS				ALL RWYS <b>121.9</b>	GND CON <b>121.75</b>	ALL RWYS <b>121.65 254.4</b>
DEP <b>125.55</b>		<b>119.1 125.325 123.85 119.3 119.5 254.4</b>						



CATEGORY	A	B	C	D
S-ILS 9R	CAT II RA 118/12 100 DA 1126			
S-ILS 9R	CAT III RVR 03			

**CATEGORY II & III ILS - SPECIAL AIRCREW & AIRCRAFT CERTIFICATION REQUIRED**

ATLANTA, GEORGIA  
 Amdt 20 22APR21

HARTSFIELD-JACKSON ATLANTA INTL (ATL)  
 33°38'N-84°26'W

**ILS RWY 9R (CAT II & III)**

HIRL all Rwy's  
 TDZ/CL Rwy's 8L,  
 9R, 10, 26R, 27L and 28

SE-4, 22 FEB 2024 to 21 MAR 2024

SE-4, 22 FEB 2024 to 21 MAR 2024