

LOC/DME I-FUN 108.9 Chan 26	APP CRS 095°	Rwy Idg TDZE Apt Elev 9000 1026 1026
---	------------------------	--

ILS RWY 9R (SA CAT I)

HARTSFIELD-JACKSON ATLANTA INTL (ATL)

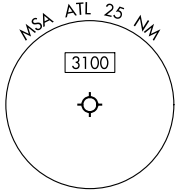
RADAR required for procedure entry, DME.

Simultaneous approach authorized.
Requires specific OPSPEC, MSPEC, or LOA approval.



MISSED APPROACH: Climb to 4000 on heading 100° and AHN VOR/DME R-235 to CONNI/AHN 30.2 DME and hold.

D-ATIS ARR 119.65	ATLANTA APP CON 127.9	ATLANTA TOWER 8L-26R 8R-26L 9L-27R 9R-27L 10-28 RWYS 119.1 125.325 123.85 119.3 119.5 254.4	ALL RWYS 121.9	GND CON (8L-26R,8R-26L) (9L-27R,9R-27L) 10-28 121.75 121.65 254.4	ALL RWYS
DEP 125.55	127.9	119.1 125.325 123.85 119.3 119.5 254.4	121.9	121.75 121.65 254.4	

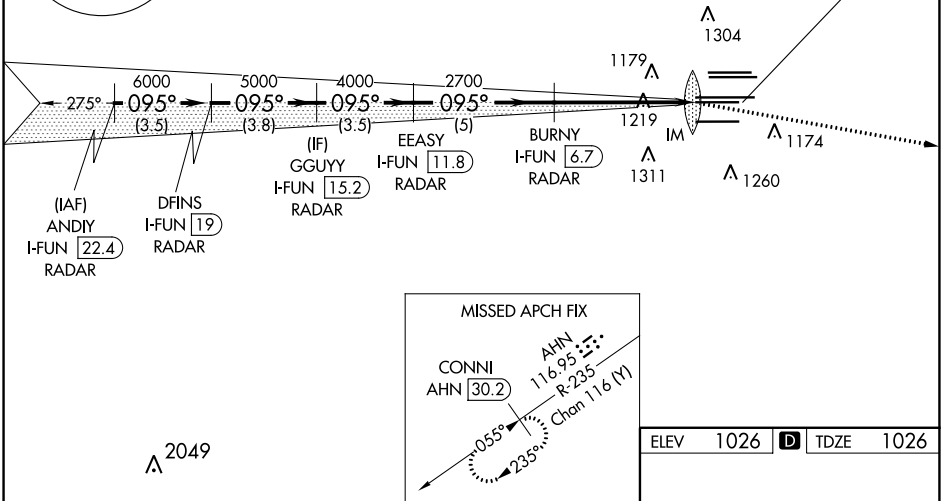


CLNC DEL **118.1** CPDLC

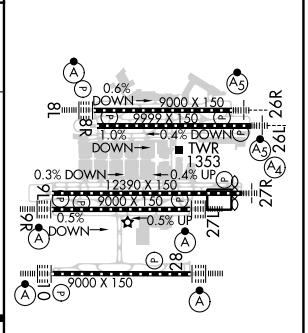
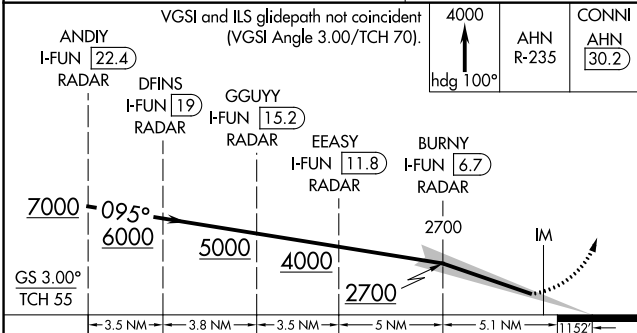
2048 Δ LOCALIZER 108.9 I-FUN Chan 26

2049 Δ

2049 Δ



ELEV 1026	D	TDZE 1026
-----------	----------	-----------



SA CATEGORY I ILS - SPECIAL AIRCREW & AIRCRAFT CERTIFICATION REQUIRED

HIRL all Rwys
TDZ/CL Rwys 8L, 9R, 10, 26R, 27L and 28

SE-4, 22 FEB 2024 to 21 MAR 2024

SE-4, 22 FEB 2024 to 21 MAR 2024