

LOC/DME I-OMO 111.55	APP CRS 095°	Rwy ldg 9000
Chan 52 (Y)		TDZE 1000
		Apt Elev 1026

ILS or LOC RWY 10

HARTSFIELD-JACKSON ATLANTA INTL (ATL)

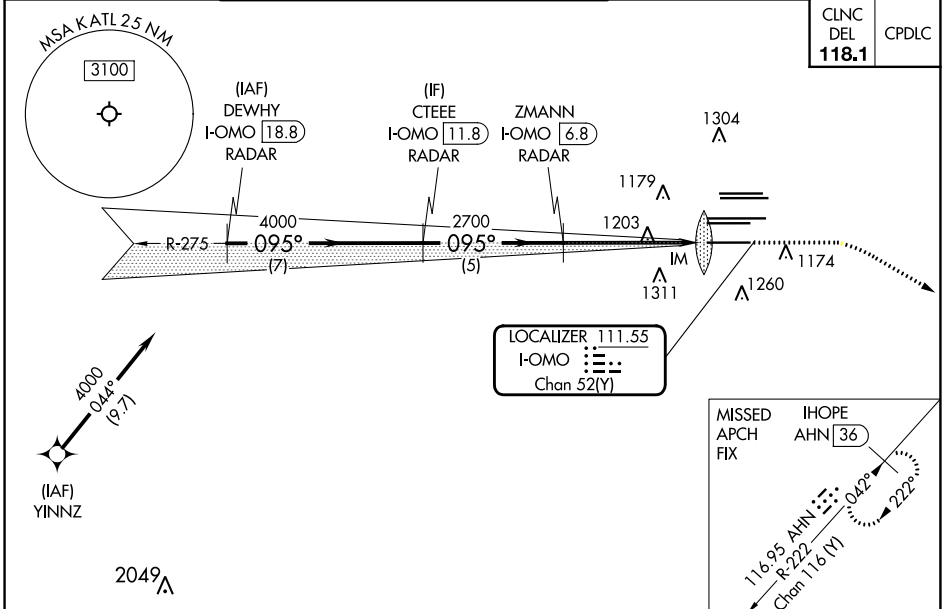
DME or RADAR required. RNP APCH - GPS from YINNZ.

Simultaneous approach authorized with Rwy 9L or 8R or 8L, or Rwy 9L and 8L. Localizer not suitable for electronic rollout guidance.

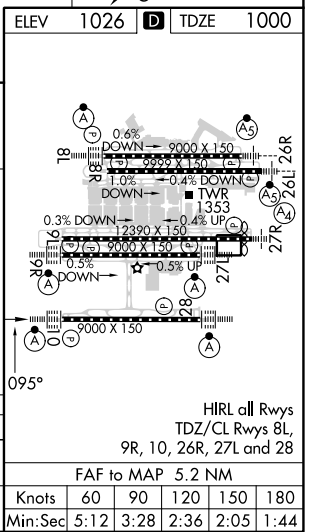
ALSF-2

MISSED APPROACH: Climb to 1400 then dimbing right turn to 3000 on heading 120° and AHN R-222 to IHOPE/AHN 36 DME and hold.

D-ATIS ARR 119.65	ATLANTA APP CON 127.9 379.9	ATLANTA TOWER 8L-26R 8R-26L 9L-27R 9R-27L 10-28 RWYs				ALL RWYs	GND CON (8L-26R,8R-26L) (9L-27R,9R-27L)	10-28	ALL RWYs
DEP 125.55	127.9 379.9	119.1 125.325	123.85	119.3	119.5 254.4	121.9	121.75	121.65	254.4



	ELEV 1026	TDZE 1000
DEWHY I-OMO 18.8 RADAR	CTEEE I-OMO 11.8 RADAR	ZMANN I-OMO 6.8 RADAR
4000	4000	2700
095°	095°	120°
7 NM	5 NM	3.9 NM
1.1	0.1	
GS 3.00° TCH 55		
CATEGORY	A	B
S-ILS 10	1200/18	200 (200-½)
S-LOC 10	1460/24	460 (500-½)
		1460/45
		460 (500-¾)



SE-4, 22 FEB 2024 to 21 MAR 2024

SE-4, 22 FEB 2024 to 21 MAR 2024