

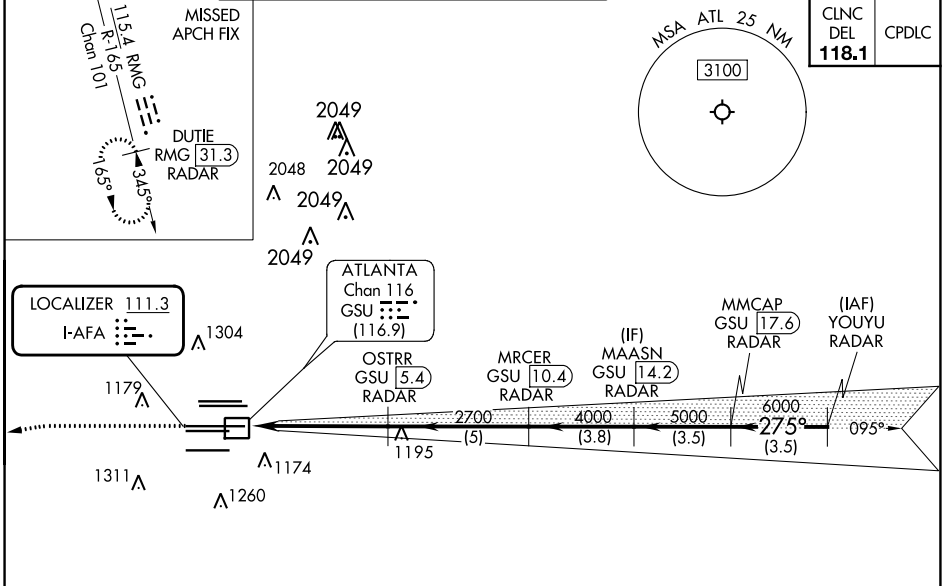
LOC I-AFA	APP CRS	Rwy Idg	27R	27L
<b>111.3</b>	<b>275°</b>	TDZE	<b>11890</b>	<b>8865</b>
		Apt Elev	<b>985</b>	<b>999</b>
			<b>1026</b>	<b>1026</b>

# ILS or LOC RWY 27R

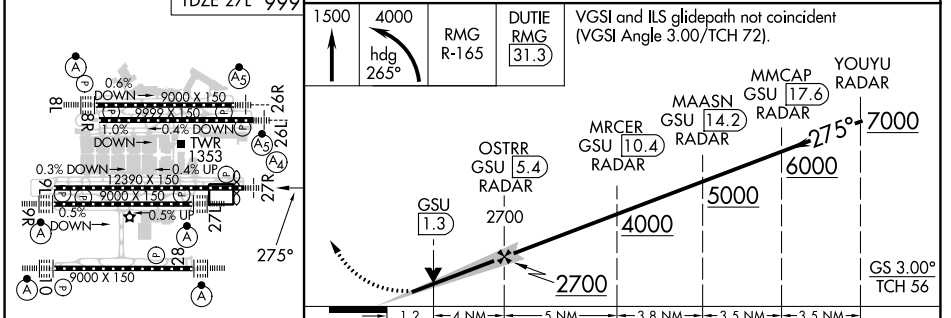
## HARTSFIELD-JACKSON ATLANTA INTL (ATL)

DME and RADAR required.		Rwy 27R MALS	Rwy 27L ALSF-2	MISSED APPROACH: Climb to 1500 then climbing left turn to 4000 on heading 265° and RMG VORTAC R-165 to DUTIE/RMG 31.3 DME/RADAR and hold.
<p>Simultaneous approach authorized. Inop table does not apply to S-ILS 27R all Cats. DME from GSU DME. DME use requires simultaneous reception of I-AFA and GSU DME.</p>				

D-ATIS	ATLANTA	ATLANTA TOWER					ALL	GND CON	ALL
ARR <b>119.65</b>	APP CON	8L-26R	8R-26L	9L-27R	9R-27L	10-28	RWYS	(8L-26R,8R-26L)	(9L-27R,9R-27L)
DEP <b>125.55</b>	<b>127.9</b>	<b>379.9</b>	<b>119.1</b>	<b>125.325</b>	<b>123.85</b>	<b>119.3</b>	<b>119.5</b>	<b>254.4</b>	<b>121.9</b>
									<b>121.75</b>
									<b>121.65</b>
									<b>254.4</b>



ELEV 1026	TDZE 27R 985	TDZE 27L 999
-----------	--------------	--------------



HIRL all Rwys	TDZ/CL Rwys 8L, 9R, 10, 26R, 27L and 28	FAF to MAP 5.2 NM			
Knots	60	90	120	150	180
Min:Sec	5:12	3:28	2:36	2:05	1:44
CATEGORY	A	B	C	D	
S-ILS 27R	1185/40		200 (200-¾)		
S-LOC 27R	1420/40	435 (400-¾)	1420/50	435 (400-1)	
SIDESTEP 27L	1420/55		421 (400-1)		1420-1½ 421 (400-1½)

SE-4, 22 FEB 2024 to 21 MAR 2024

SE-4, 22 FEB 2024 to 21 MAR 2024