

# RNAV (GPS) RWY 12R

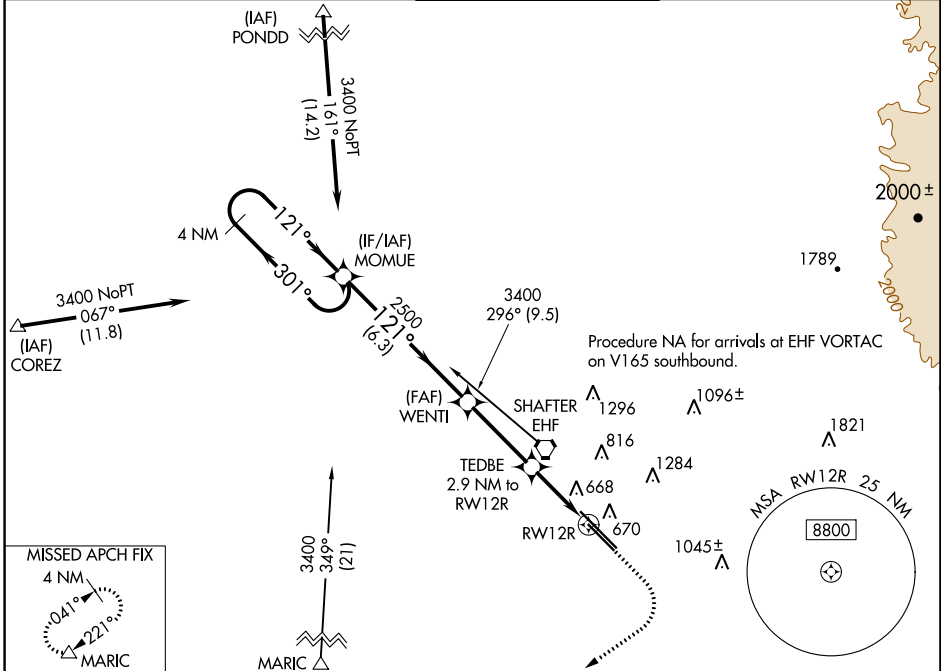
MEADOWS FLD (BFL)

WAAS CH <b>61040</b> <b>W12B</b>	APP CRS <b>121°</b>	Rwy Idg TDZE <b>7700</b> <b>488</b> Apt Elev <b>510</b>
--	------------------------	--

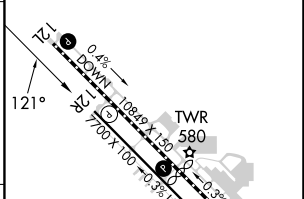
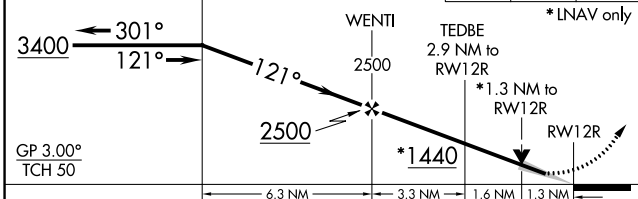
**▽** For uncompensated Baro-VNAV systems, LNAV/VNAV NA below -1°C (31°F) or above 54°C (130°F). Circling NA northeast of Rwy 12L-30R. DME/DME RNP-0.3 NA.

MISSED APPROACH: Climb to 1000 then climbing right turn to 3500 direct MARIC and hold.

ATIS <b>118.6</b>	BAKERSFIELD APP CON ★ <b>118.8 284.625 118.9 270.3</b> (SOUTH) (NORTH)	BAKERSFIELD TOWER ★ <b>118.1 (CTAF) 0 257.8</b>	GND CON <b>121.7</b>	UNICOM <b>122.95</b>
----------------------	--	--	-------------------------	-------------------------



VGSI and RNAV glidepath not coincident (VGSI Angle 3.00/TCH 25).	1000	3500	MARIC	ELEV 510	<b>D</b>	TDZE 488
--	------	------	-------	----------	----------	----------



CATEGORY	A	B	C	D
LPV DA	738-3/4		250 (300-3/4)	
LNAV/VNAV DA	969-15/8		481 (500-15/8)	
LNAV MDA	920-1	432 (500-1)	920-1 1/4	432 (500-1 1/4)
<b>C</b> CIRCLING	960-1	450 (500-1)	960-1 1/2	1060-2 450 (500-1 1/2) 550 (600-2)

TDZ/CL Rwy 30R  
HIRL Rwy 12L-30R **L**  
MIRL Rwy 12R-30L **L**  
REIL Rwy 12R and 30L

SW-3, 22 FEB 2024 to 21 MAR 2024

SW-3, 22 FEB 2024 to 21 MAR 2024