


LOC/DME I-BRO 110.3 Chan 40	APP CRS 132°	Rwy Idg 7399 TDZE 19 Apt Elev 22
---	------------------------	---

ILS or LOC RWY 13

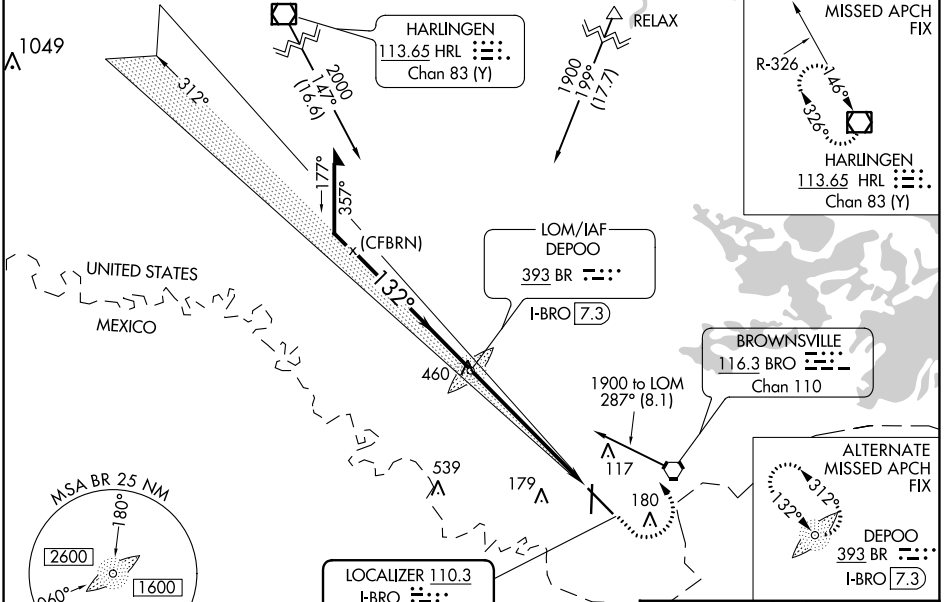
BROWNSVILLE/SOUTH PADRE ISLAND INTL (BRO)

ADF or RADAR required.

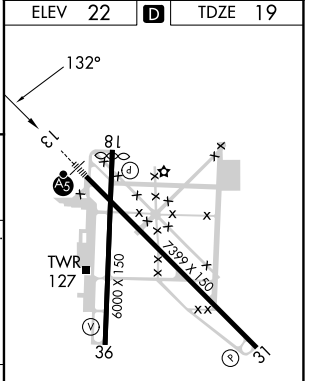
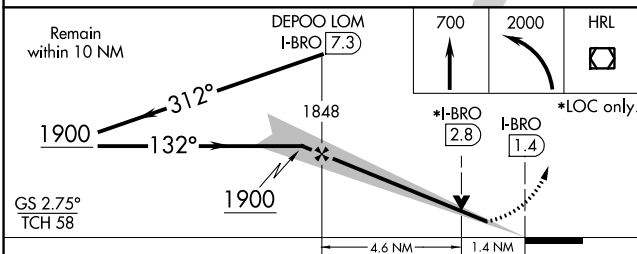
⚠ VDP NA when using Port Isabel altimeter setting. For inop ALS increase S-LOC 13 Cats C and D visibility to 1 3/8 miles. When local altimeter setting not received, use Port Isabel altimeter setting and increase DA to 307 feet and all MDA 40 feet. S-LOC 13 Cat C and D visibility to RVR 5500, Circling Cat D visibility to 2 1/4 miles. For inop ALS when using Port Isabel altimeter setting increase S-LOC 13 Cats C/D visibility to 1 3/8 miles.

MALSRL
 MISSED APPROACH: Climb to 700 then climbing left turn to 2000 direct HRL VOR/DME and hold.

ATIS 128.55	VALLEY APP CON 119.5 257.6	BROWNSVILLE TOWER * 118.9 (CTAF) 239.3	GND CON 121.9	UNICOM 122.95
-----------------------	--------------------------------------	--	-------------------------	-------------------------



ELEV 22	TDZE 19
---------	---------



CATEGORY	A	B	C	D
S-ILS 13	269/24		250 (300-1/2)	
S-LOC 13	480/24	461 (500-1/2)	480/50	461 (500-1)
C CIRCLING	480-1 458 (500-1)	540-1 518 (600-1)	540-1 1/2 518 (600-1/2)	680-2 658 (700-2)

MIRL Rwy 18-36
HIRL Rwy 13-31

FAF to MAP 6 NM

Knots	60	90	120	150	180
Min:Sec	6:00	4:00	3:00	2:24	2:00

SC-3, 22 FEB 2024 to 21 MAR 2024

SC-3, 22 FEB 2024 to 21 MAR 2024