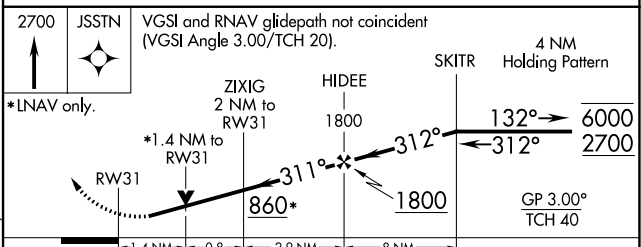
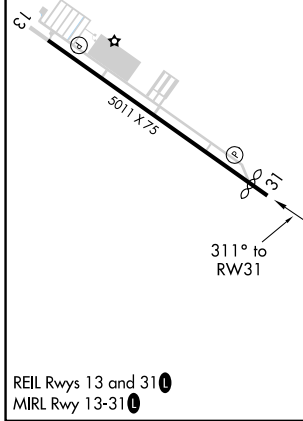
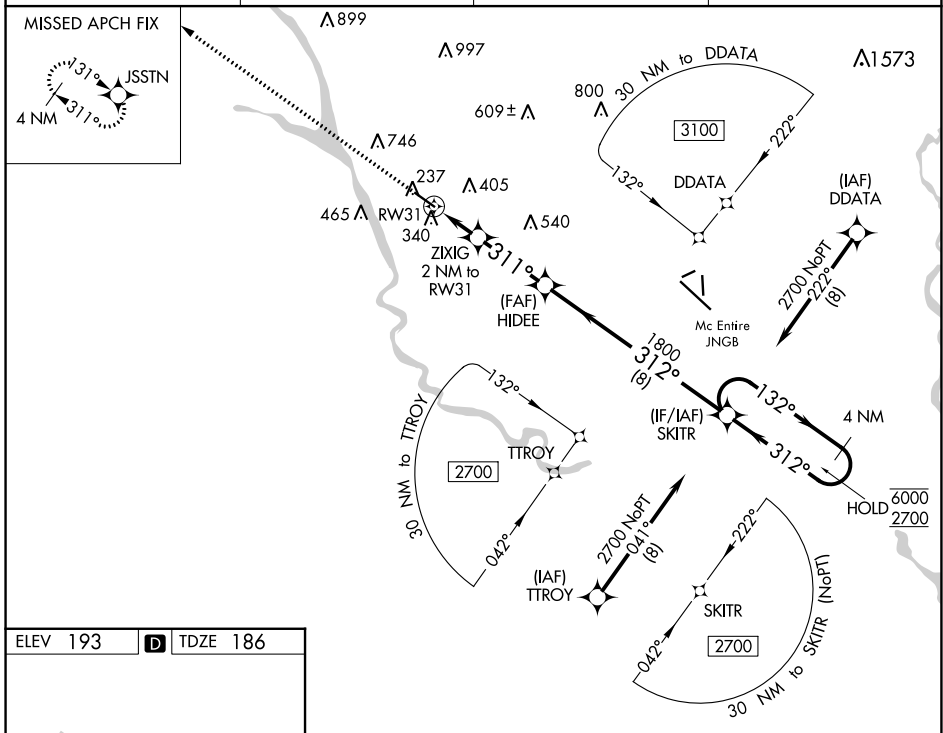


WAAS CH 42742 W31A	APP CRS 311°	Rwy Idg TDZE Apt Elev	4599 186 193
--	------------------------	-----------------------------	---

RNAV (GPS) RWY 31

JIM HAMILTON L B OWENS (CUB)

RNP APCH.		MISSED APPROACH: Climb to 2700 direct JSSTN and hold.	
▼ Rwy 31 helicopter visibility reduction below 3/4 SM NA. For uncompensated Baro-VNAV systems, LNAV/VNAV NA below -6°C or above 54°C.			
ASOS 118.675	COLUMBIA APP CON 133.4 285.6	CLNC DEL 124.4	UNICOM 123.075 (CTAF) 0



CATEGORY	A	B	C	D
LPV DA		436-3/4	250 (300-3/4)	
LNAV/VNAV DA		551-1	365 (400-1)	
LNAV MDA	640-1	454 (500-1)	640-1 3/8	454 (500-1 3/8)

SE-2, 22 FEB 2024 to 21 MAR 2024

SE-2, 22 FEB 2024 to 21 MAR 2024