

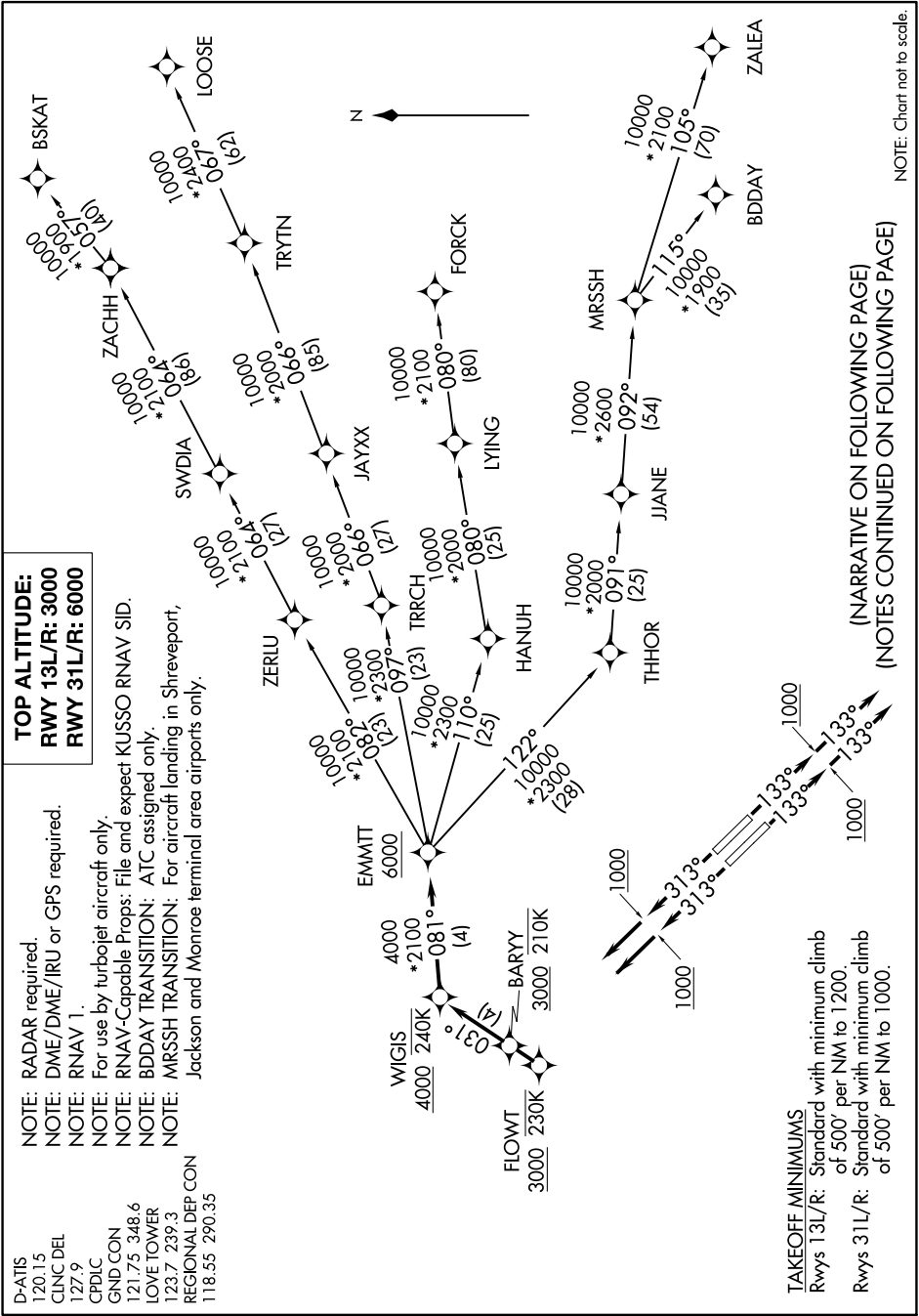
EMMTT FOUR DEPARTURE (RNAV)

SC-2, 22 FEB 2024 to 21 MAR 2024

D-ATIS 120.15
CLNC DEL 127.9
CPDLC
GND CON 121.75 348.6
LOVE TOWER 123.7 239.3
REGIONAL DEP CON 118.55 290.35

NOTE: RADAR required.
NOTE: DME/DME/IRU or GPS required.
NOTE: RNAV 1.
NOTE: For use by turbojet aircraft only.
NOTE: RNAV-Capable Props: File and expect KUSSO RNAV SID.
NOTE: BDDAY TRANSITION: ATC assigned only.
NOTE: MRSSH TRANSITION: For aircraft landing in Shreveport, Jackson and Monroe terminal area airports only.

TOP ALTITUDE:
RWY 13L/R: 3000
RWY 31L/R: 6000



NOTE: Chart not to scale.

(NARRATIVE ON FOLLOWING PAGE)
(NOTES CONTINUED ON FOLLOWING PAGE)

SC-2, 22 FEB 2024 to 21 MAR 2024