

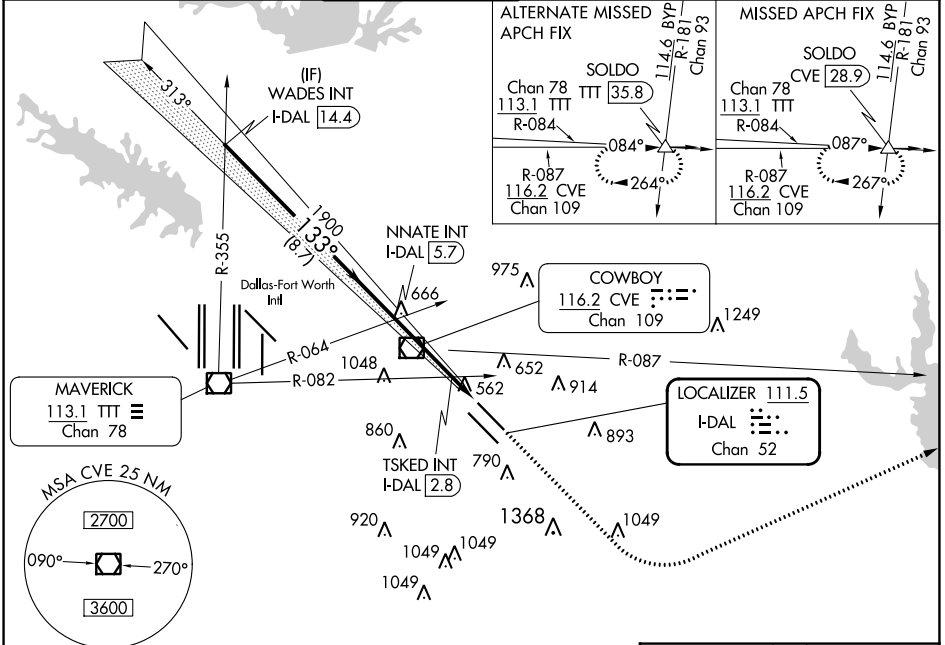
LOC/DME I-DAL <b>111.5</b> Chan <b>52</b>	APP CRS <b>133°</b>	Rwy Idg <b>7352</b> TDZE <b>485</b> Apt Elev <b>487</b>
-------------------------------------------------	------------------------	---------------------------------------------------------------

# ILS Y or LOC Y RWY 13L

DALLAS LOVE FLD (DAL)

RADAR required for procedure entry.		MALSR 	MISSED APPROACH: Climb to 1000 then climbing left turn to 3000 on heading 060° and CVE VOR/DME R-087 to SOLDLO INT/CVE 28.9 DME and hold.
Simultaneous approach authorized.			

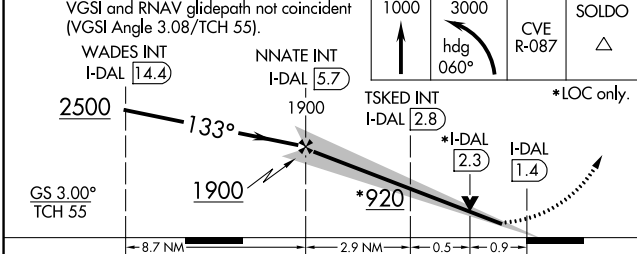
D-ATIS <b>120.15</b>	REGIONAL APP CON NORTH <b>124.3 282.275</b> SOUTH <b>125.2 343.65</b>	LOVE TOWER <b>123.7 239.3</b>	GND CON <b>121.75 348.6</b>	CLNC DEL <b>127.9</b>	CPDLC
-------------------------	-----------------------------------------------------------------------------	----------------------------------	--------------------------------	--------------------------	-------



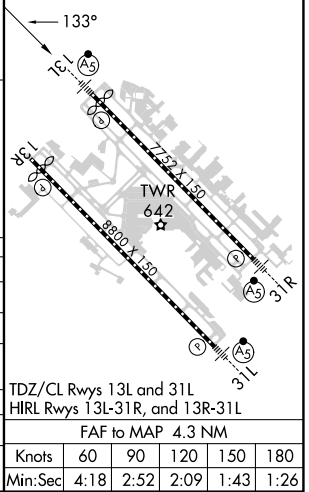
SC-2, 22 FEB 2024 to 21 MAR 2024

SC-2, 22 FEB 2024 to 21 MAR 2024

ELEV 487	<b>D</b>	TDZE 485
----------	----------	----------



CATEGORY	A	B	C	D
S-ILS 13L	685/18 200 (200-½)			
S-LOC 13L	920/24	435 (500-½)	920/40	435 (500-¾)
<b>C</b> CIRCLING	1000-1 513 (600-1)	1140-1 653 (700-1)	1220-2 733 (800-2)	1520-3 1033 (1100-3)
TSKED FIX MINIMUMS (DUAL VOR RECEIVERS OR DME REQUIRED)				
S-LOC 13L	820/24	335 (400-½)	820/26	335 (400-%)
<b>C</b> CIRCLING	1000-1 513 (600-1)	1140-1 653 (700-1)	1220-2 733 (800-2)	1520-3 1033 (1100-3)



TDZ/CL Rwsy 13L and 31L HIRL Rwsy 13L-31R, and 13R-31L	FAF to MAP 4.3 NM				
Knots	60	90	120	150	180
Min:Sec	4:18	2:52	2:09	1:43	1:26