


APP CRS	Rwy Idg	<b>7352</b>
<b>133°</b>	TDZE	<b>485</b>
	Apt Elev	<b>487</b>

# RNAV (RNP) W RWY 13L

DALLAS LOVE FLD (DAL)

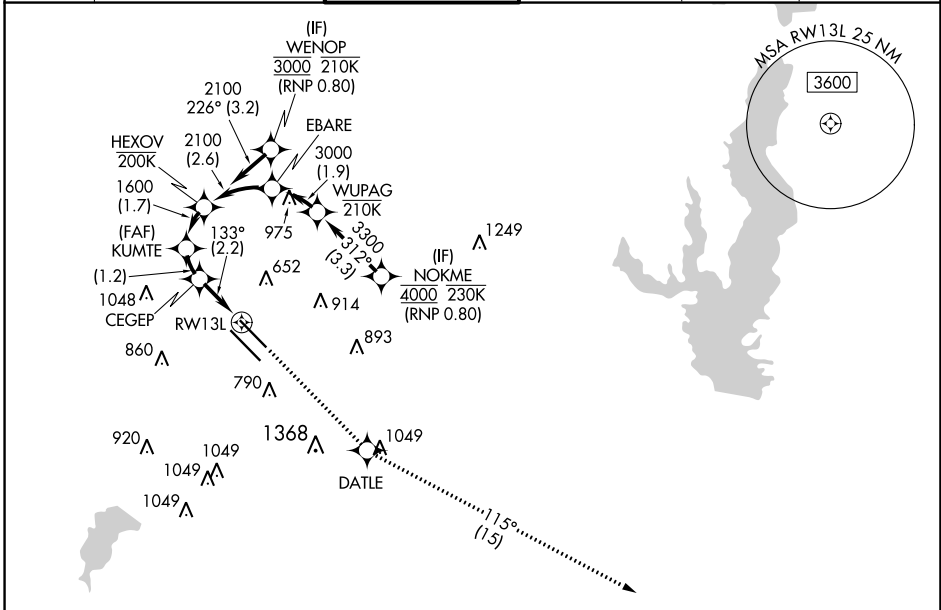
RNP AR APCH. RF required.

Simultaneous approach authorized. For uncompensated Baro-VNAV systems, procedure NA below -6°C or above 54°C. For inop ALS, increase RNP 0.11 all Cats visibility to RVR 4500.

MALSR 

MISSED APPROACH: Climb to 3000 direct DATLE and on track 115° to DUMPY and hold.

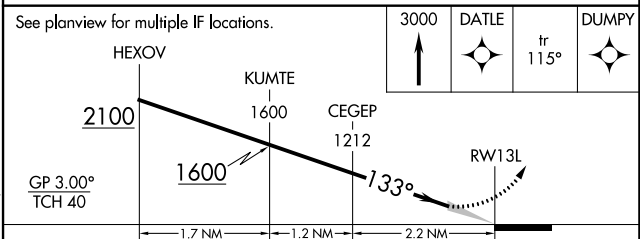
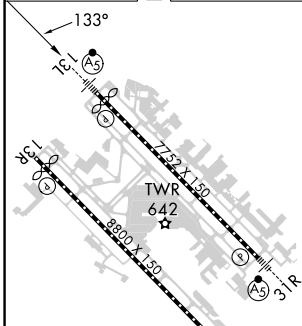
D-ATIS	REGIONAL APP CON	LOVE TOWER	GND CON	CLNC DEL	CPDLC
<b>120.15</b>	NORTH <b>124.3 282.275</b> SOUTH <b>125.2 343.65</b>	<b>123.7 239.3</b>	<b>121.75 348.6</b>	<b>127.9</b>	



SC-2, 22 FEB 2024 to 21 MAR 2024

SC-2, 22 FEB 2024 to 21 MAR 2024

ELEV <b>487</b>	<b>D</b>	TDZE <b>485</b>
-----------------	----------	-----------------



CATEGORY	A	B	C	D
RNP 0.11 DA		754/24	269 (300-1/2)	
RNP 0.30 DA		846/40	361 (400-3/4)	

TDZ/CL Rwy 13L and 31L  
HIRL Rwy 13L-31R, and 13R-31L

DALLAS, TEXAS  
Orig-C 13SEP18

32°51'N-96°51'W

## DALLAS LOVE FLD (DAL) RNAV (RNP) W RWY 13L

**AUTHORIZATION REQUIRED**