

WAAS CH <b>72808</b> W31A	APP CRS <b>313°</b>	Rwy Idg TDZE <b>477</b> Apt Elev <b>487</b>
---------------------------------	------------------------	---

# RNAV (GPS) Y RWY 31L

DALLAS LOVE FLD (DAL)

RNP APCH.

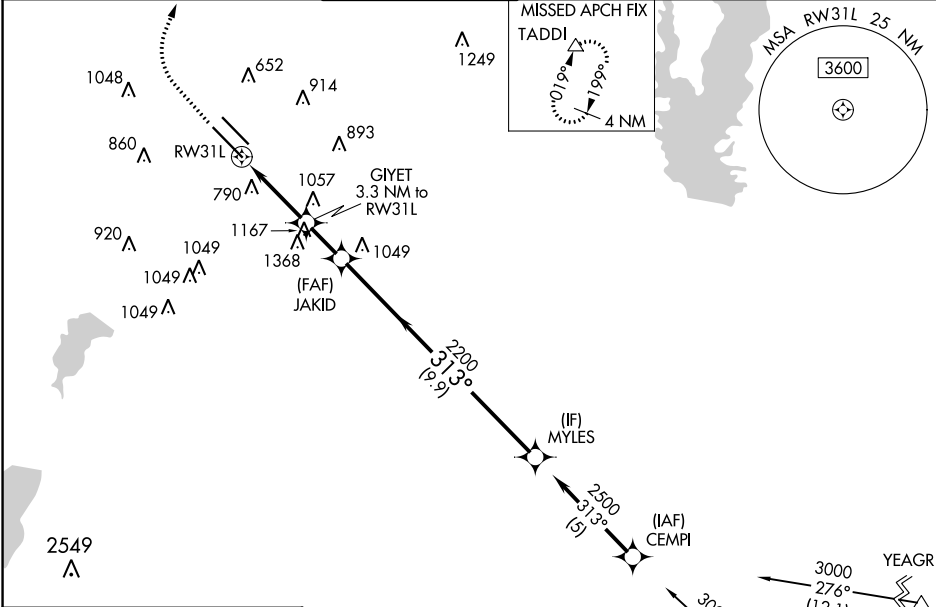
**▽** Simultaneous approach authorized. Use of FD or AP providing RNAV track guidance required during simultaneous operations. LNAV procedure NA during simultaneous operations. For inop ALS, increase LPV all Cats visibility to RVR 4500.

MALSR



MISSED APPROACH: Climb to 1700 then climbing right turn to 4000 direct TADDI and hold.

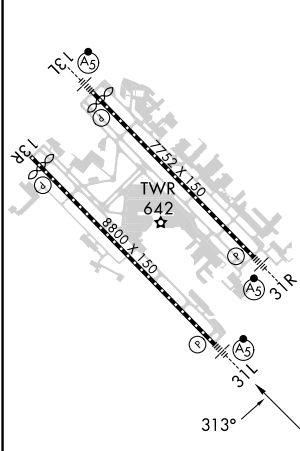
D-ATIS <b>120.15</b>	REGIONAL APP CON NORTH <b>124.3 282.275</b> SOUTH <b>125.2 343.65</b>	LOVE TOWER <b>123.7 239.3</b>	GND CON <b>121.75 348.6</b>	CLNC DEL <b>127.9</b>	CPDLC
-------------------------	---	----------------------------------	--------------------------------	--------------------------	-------



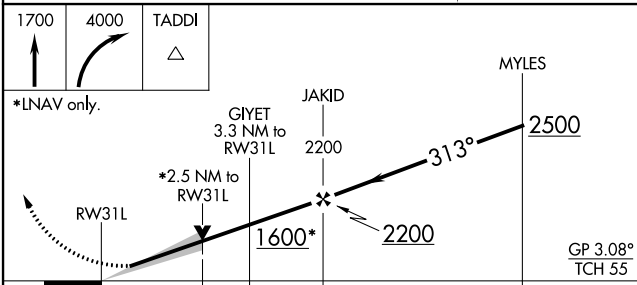
SC-2, 22 FEB 2024 to 21 MAR 2024

SC-2, 22 FEB 2024 to 21 MAR 2024

ELEV 487	<b>D</b>	TDZE 477
----------	----------	----------



TDZ/CL Rwy 13L and 31L  
HIRL Rwy 13L-31R, and 13R-31L



CATEGORY	A	B	C	D
LPV DA	770/22 293 (300-½)			
LNAV MDA	1360/40	883 (900-¾)	1360-2	883 (900-2)
<b>C</b> CIRCLING	1360-1¼	873 (900-1¼)	1360-2½ 873 (900-2½)	1520-3 1033 (1100-3)