

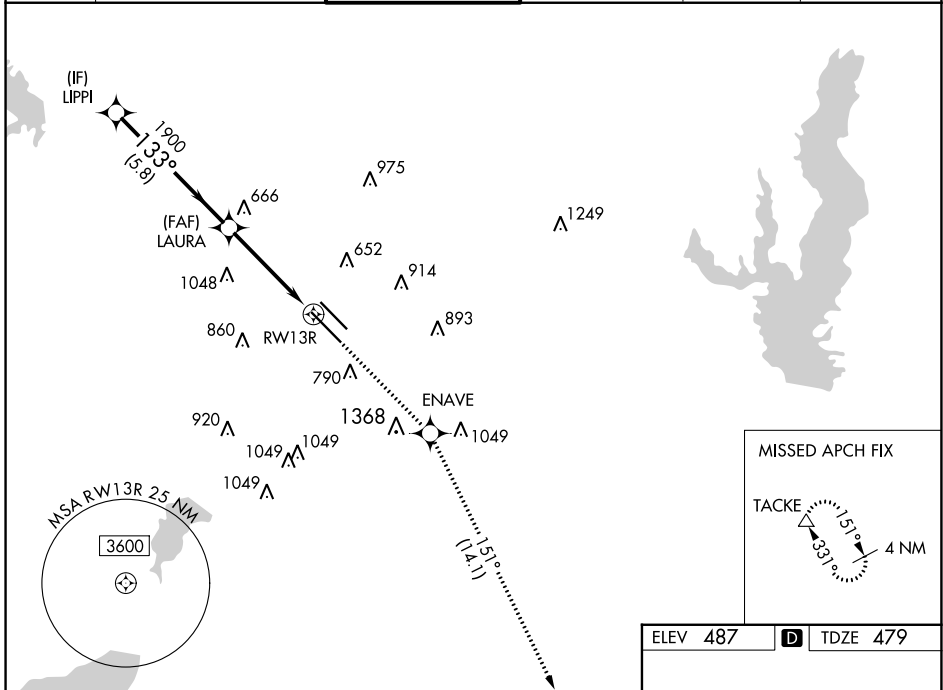
WAAS CH 82436 W13A	APP CRS 133°	Rwy Idg 8310 TDZE 479 Apt Elev 487
--	------------------------	---

RNAV (GPS) Z RWY 13R

DALLAS LOVE FLD (DAL)

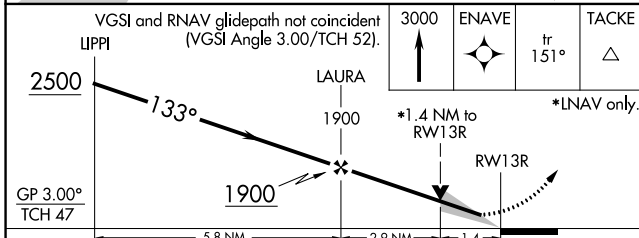
RNP APCH.	<p>Simultaneous approach authorized. Use of FD or AP providing RNAV track guidance required during simultaneous operations. LNAV procedure NA during simultaneous operations. For uncompensated Baro-VNAV systems, LNAV/VNAV NA below -6°C or above 54°C.</p>	<p>MISSED APPROACH: Climb to 3000 direct ENAVE and on track 151° to TACKE and hold.</p>
-----------	---	---

D-ATIS 120.15	REGIONAL APP CON NORTH 124.3 282.275 SOUTH 125.2 343.65	LOVE TOWER 123.7 239.3	GND CON 121.75 348.6	CLNC DEL 127.9	CPDLC
-------------------------	---	----------------------------------	--------------------------------	--------------------------	-------

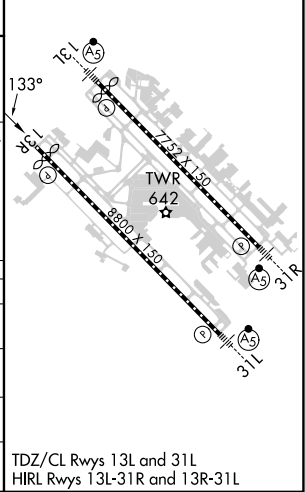


SC-2, 22 FEB 2024 to 21 MAR 2024

SC-2, 22 FEB 2024 to 21 MAR 2024



ELEV 487	D TDZE 479
----------	-------------------



CATEGORY	A	B	C	D
LPV DA	679/40		200 (200-¾)	
LNAV/VNAV DA	834/60		355 (400-1¼)	
LNAV MDA	980/55	501 (500-1)	980-1⅓	501 (500-1⅓)
C CIRCLING	1080-1 593 (600-1)	1140-1 653 (700-1)	1220-2 733 (800-2)	1520-3 1033 (1100-3)

TDZ/CL Rwy 13L and 31L
HIRL Rwy 13L-31R and 13R-31L