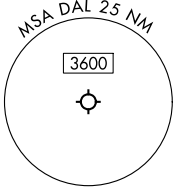


# SWTSR SEVEN DEPARTURE (RNAV)

REGIONAL DEP CON  
 118.55 290.35  
 D-ATIS  
 120.15  
 CLNC DEL  
 127.9  
 CPDLC  
 GND CON  
 121.75 348.6  
 LOVE TOWER  
 123.7 239.3

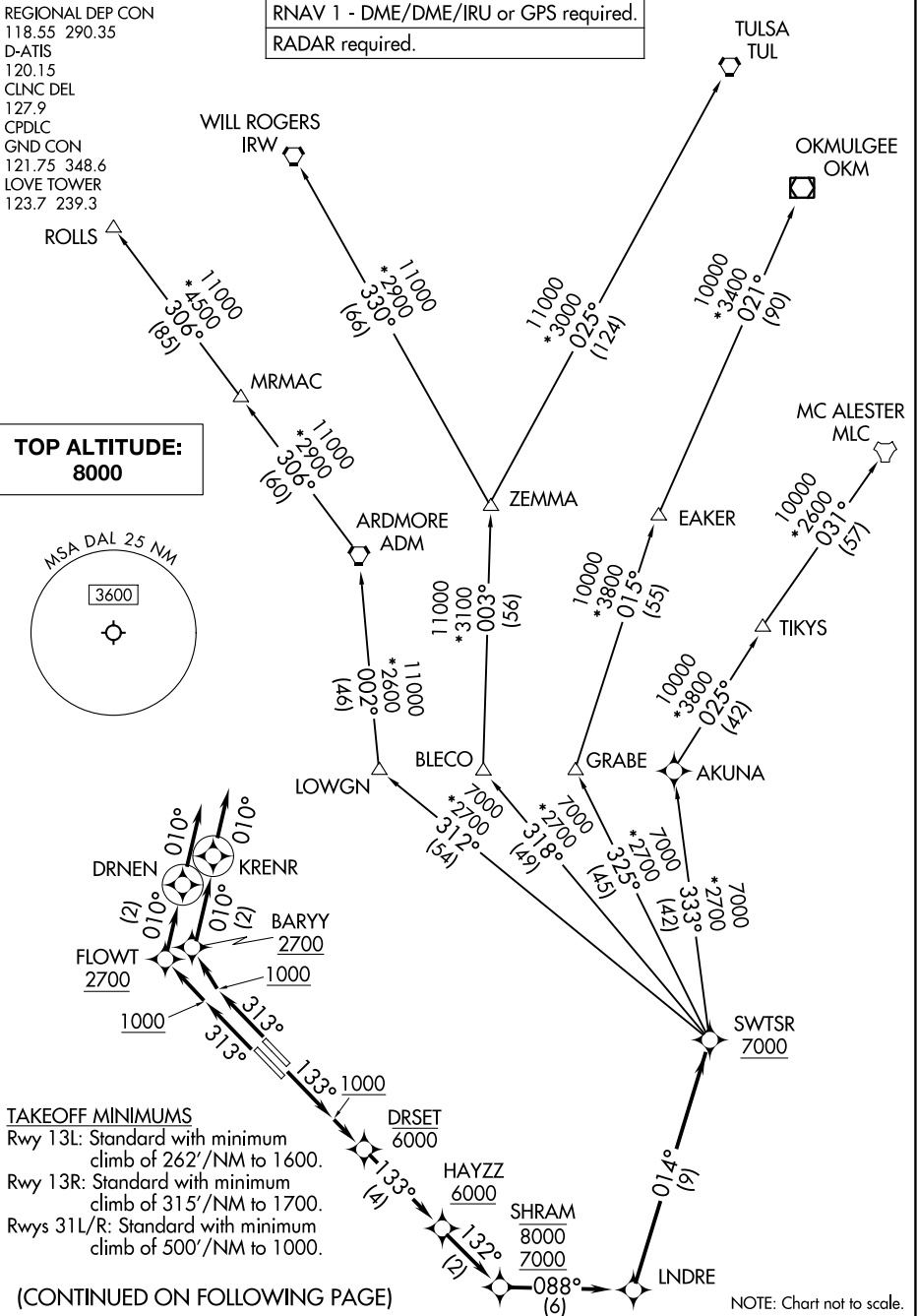
RNAV 1 - DME/DME/IRU or GPS required.  
 RADAR required.

**TOP ALTITUDE:  
 8000**



SC-2, 22 FEB 2024 to 21 MAR 2024

SC-2, 22 FEB 2024 to 21 MAR 2024



**TAKEOFF MINIMUMS**  
 Rwy 13L: Standard with minimum climb of 262'/NM to 1600.  
 Rwy 13R: Standard with minimum climb of 315'/NM to 1700.  
 Rws 31L/R: Standard with minimum climb of 500'/NM to 1000.

(CONTINUED ON FOLLOWING PAGE)

NOTE: Chart not to scale.

# SWTSR SEVEN DEPARTURE (RNAV)