

DEL RIO, TEXAS

# ILS or LOC/DME Y RWY 31C

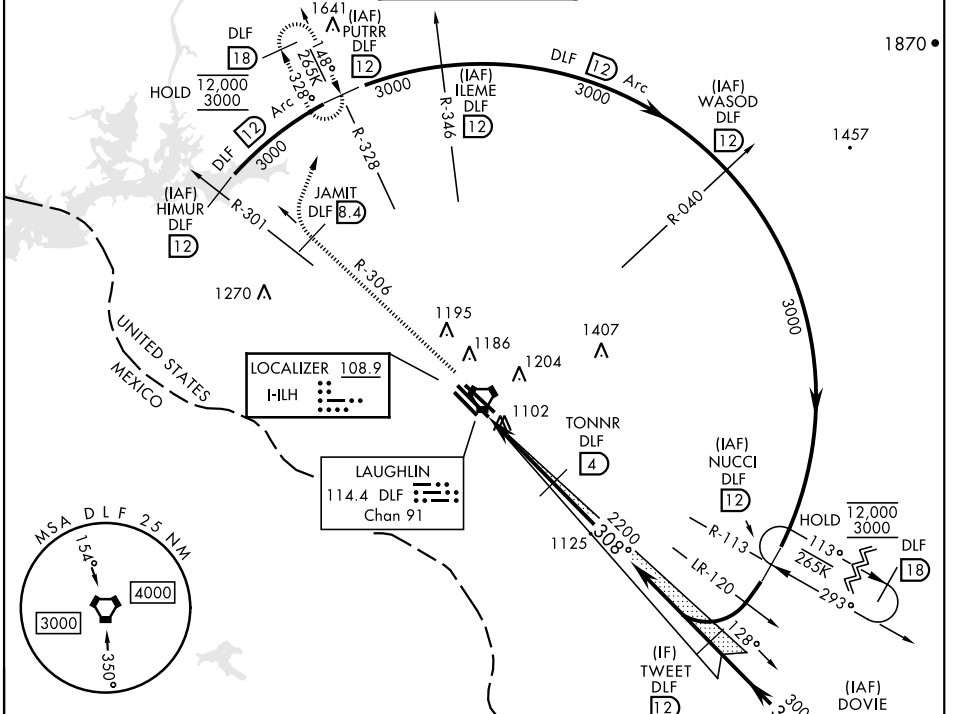
LOC I-ILH <b>108.9</b>	APCH CRS <b>308°</b>	Rwy Idg <b>8852</b>	31C <b>6282</b>	31L <b>8316</b>	31R <b>1078</b>
		TDZE <b>1079</b>	<b>1080</b>	<b>1078</b>	
		Arprt Elev <b>1082</b>			

AL-111 [USAF] LAUGHLIN AFB (KDLF)

\* Circling W of Rwy 13R-31L not authorized.

MISSED APPROACH: Climb to 3000 on DLF VORTAC R-306 to 8.4 DME (JAMIT), then turn right to intercept DLF R-328 to 12 DME (PUTRR) and hold.

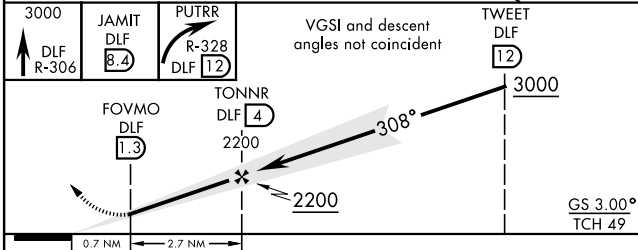
ATIS ★ <b>114.4 269.9</b>	DEL RIO APP CON <b>119.6 259.1</b>	TOWER ★ <b>125.2 307.375</b>	GND CON <b>275.8</b>	CLNC DEL <b>120.5 335.8</b>
------------------------------	---------------------------------------	---------------------------------	-------------------------	--------------------------------



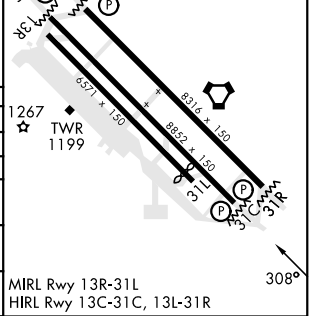
SC-3, 22 FEB 2024 to 21 MAR 2024

SC-3, 22 FEB 2024 to 21 MAR 2024

EMERG SAFE ALT 100 NM 16,000



ELEV	1082	TDZE 31C	1079
		TDZE 31L	1080
		TDZE 31R	1078
		Rwy 31L Idg	6282'



CATEGORY	A	B	C	D	E
S-ILS 31C	1279-3/4		200	(200-3/4)	
S-LOC 31C	1360-1	281 (300-1)	1360-7/8		281 (300-7/8)
SIDESTEP 31L	1360-1	280 (300-1)	1360-1 1/2 280 (300-1 1/2)	1360-2	280 (300-2)
SIDESTEP 31R	1380-1	302 (300-1)	1380-1 1/2 302 (300-1 1/2)	1380-2	302 (300-2)
CIRCLING*	1500-1 418 (500-1)	1540-1 458 (500-1)	1700-1 3/4 618 (700-1 3/4)	1700-2 618 (700-2)	1740-2 1/4 658 (700-2 1/4)

DEL RIO, TEXAS

29°22'N-100°47'W

LAUGHLIN AFB (KDLF)

Amdt 6 05OCT23

# ILS or LOC/DME Y RWY 31C