

LAUGHLIN ONE DEPARTURE (DLF1 • DLF)

AL-111 [USAF]

LAUGHLIN AFB (KDLF)

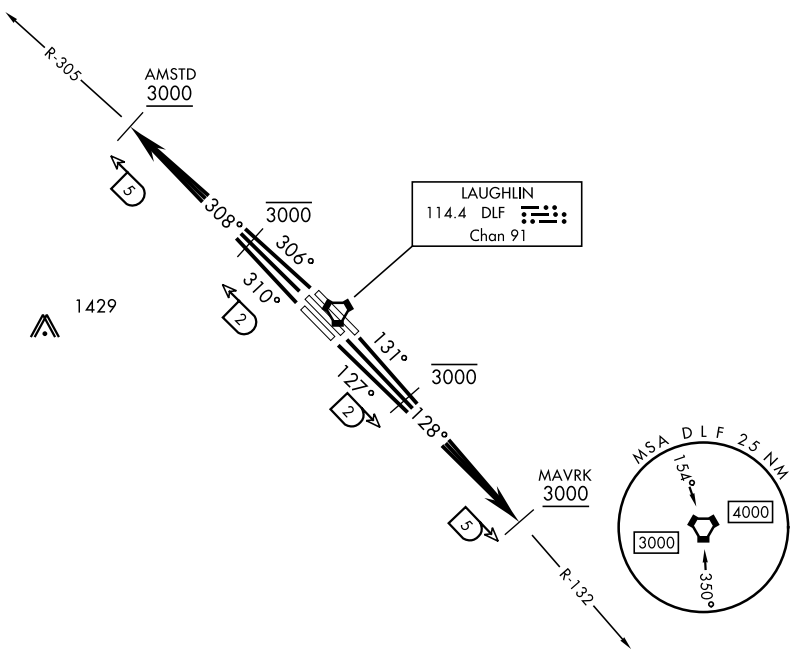
DEL RIO, TEXAS

ATIS ★ 114.4 269.9
 CLNC DEL
 120.5 335.8
 GND CON
 275.8
 LAUGHLIN TOWER ★
 125.2 307.375
 DEL RIO DEP CON
 119.6 296.7

Rwy	Knots	60	120	180	240	300	360
31C/L/R	V/V(fpm)	470	940	1410	1880	2350	2810
13C	V/V(fpm)	440	880	1320	1760	2200	2640
13L	V/V(fpm)	450	890	1330	1770	2210	2650
13R	V/V(fpm)	410	810	1210	1620	2020	2420

ATC Climb Rate to 5 DME

1870



SC-3, 22 FEB 2024 to 21 MAR 2024

SC-3, 22 FEB 2024 to 21 MAR 2024



DEPARTURE ROUTE DESCRIPTION

(MAVRK Tracks)

TAKEOFF RWY 13C: Climb on track 128°, thence...

TAKEOFF RWY 13L: Climb on track 131°, thence...

TAKEOFF RWY 13R: Climb on track 127°, thence...

...intercept DLF VORTAC R-132 to DLF 5 DME (MAVRK), cross DLF 2 DME at or below 3000, cross DLF 5 DME (MAVRK) at or above 3000, then as directed by ATC.

(AMSTD Tracks)

TAKEOFF RWY 31C: Climb on track 308°, thence...

TAKEOFF RWY 31L: Climb on track 310°, thence...

TAKEOFF RWY 31R: Climb on track 306°, thence...

...intercept DLF VORTAC R-305 to DLF 5 DME (AMSTD), cross DLF 2 DME at or below 3000, cross DLF 5 DME (AMSTD) at or above 3000, then as directed by ATC.

LAUGHLIN ONE DEPARTURE (DLF1 • DLF)

Amdt 1 10AUG23

DEL RIO, TEXAS

LAUGHLIN AFB (KDLF)