

# RNAV (GPS) RWY 31C

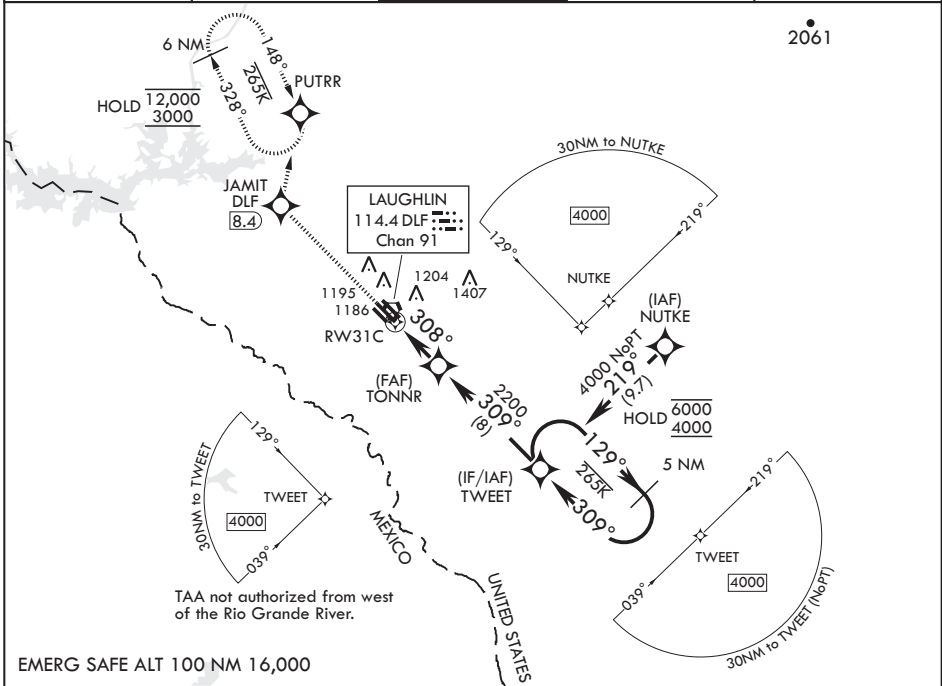
APCH CRS <b>308°</b>	Rwy Idg <b>8852 6282 8316</b>	31C	31L	31R
	TDZE <b>1079 1080 1078</b>			
	Arpt Elev <b>1082</b>			

AL-111 (USAF)

LAUGHLIN AFB (KDLF)

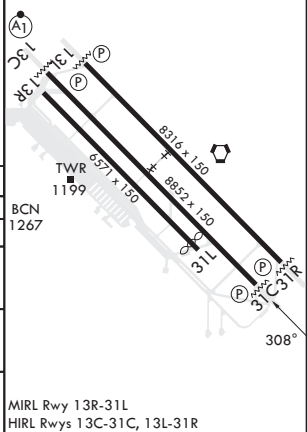
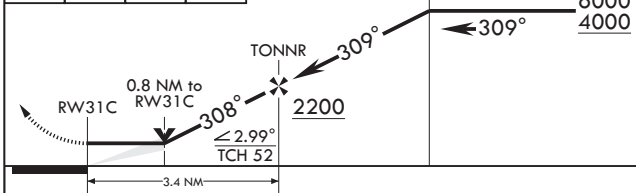
RNP APCH - GPS	MISSED APPROACH: Climb to 3000 direct JAMIT, then track 005° to PUTRR and hold.
* Circling not authorized SW of Rwy 13R-31L.	

ATIS* <b>114.4 269.9</b>	DEL RIO APP CON <b>119.6 259.1</b>	TOWER* <b>125.2 307.375</b>	GND CON <b>275.8</b>	CLNC DEL <b>120.5 335.8</b>
-----------------------------	---------------------------------------	--------------------------------	-------------------------	--------------------------------



EMERG SAFE ALT 100 NM 16,000

3000	JAMIT	tr 005°	PUTRR	ELEV 1082	TDZE 31C 1079
				Rwy 31L Idg 6282'	TDZE 31L 1080
					TDZE 31R 1078



CATEGORY	A	B	C	D	E
LNAV MDA	1380-1 301 (300-1)		1380-7/8 301 (300-7/8)		
SIDESTEP 31R	1380-1 302 (300-1)		1380-1½ 302 (300-1½)	1380-2 302 (300-2)	
SIDESTEP 31L	1420-1 340 (400-1)		1420-1½ 340 (400-1½)	1420-2 340 (400-2)	
CIRCLING*	1500-1 418 (500-1)	1540-1 458 (500-1)	1700-1¾ 618 (700-1¾)	1700-2 618 (700-2)	1740-2¼ 658 (700-2¼)

# RNAV (GPS) RWY 31C

SC-3, 22 FEB 2024 to 21 MAR 2024