

DEL RIO, TEXAS

# VOR/DME RWY 31C

VORTAC DLF <b>114.4</b> Chan <b>91</b>	APCH CRS <b>322°</b>	Rwy Idg TDZE Arprt Elev <b>8852</b> <b>1079</b> <b>1082</b>
--	-------------------------	--

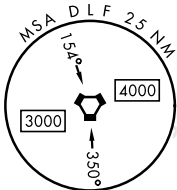
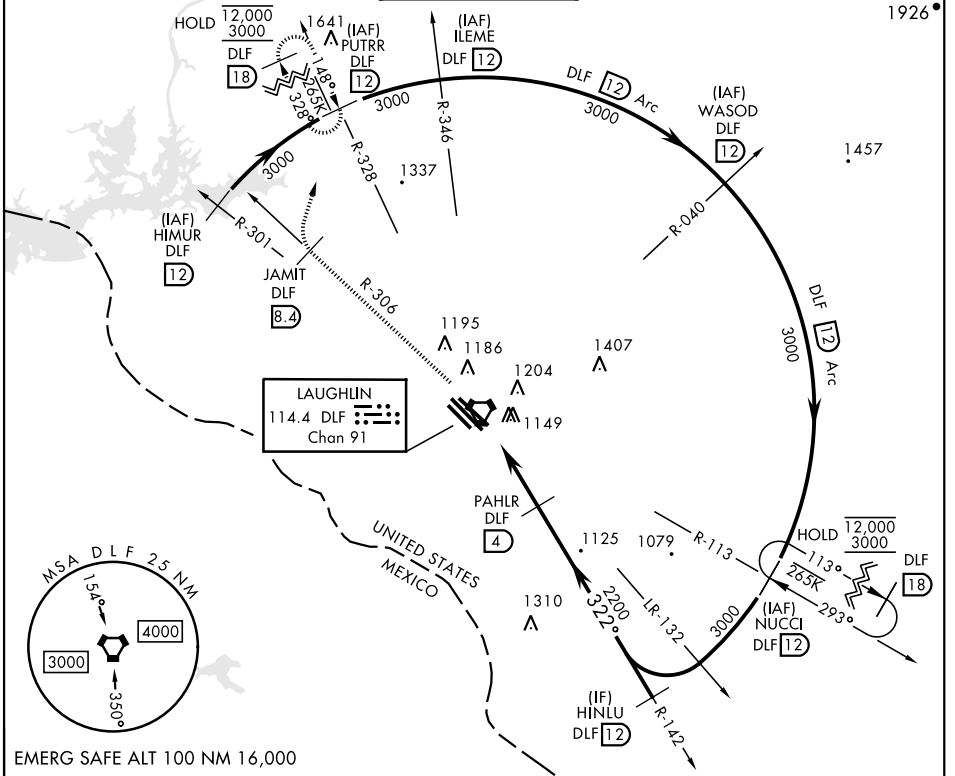
AL-111 [USAF]

LAUGHLIN AFB (KDLF)

**∇** \*Circling not authorized in sector SW of Rwy 13R-31L.

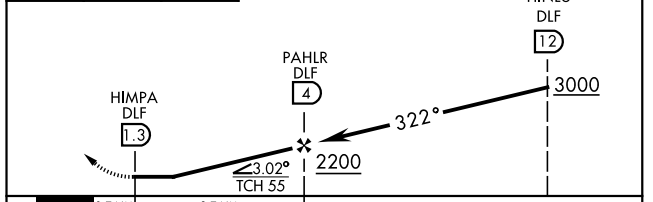
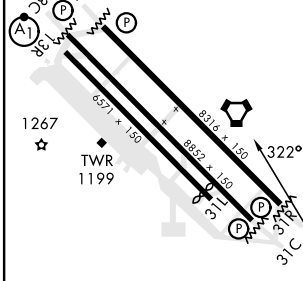
MISSED APPROACH: Climb to 3000 on DLF VORTAC R-306 to 8.4 DME (JAMIT), then turn right to intercept DLF R-328 to 12 DME (PUTRR), and hold.

ATIS ★ <b>114.4 269.9</b>	DEL RIO APP CON <b>119.6 259.1</b>	TOWER ★ <b>125.2 307.375</b>	GND CON <b>275.8</b>	CLNC DEL <b>120.5 335.8</b>
------------------------------	---------------------------------------	---------------------------------	-------------------------	--------------------------------



EMERG SAFE ALT 100 NM 16,000

ELEV 1082	TDZE 1079	3000	JAMIT R-306 DLF 8.4	PUTRR R-328 DLF 12
-----------	-----------	------	---------------------	--------------------



CATEGORY	A	B	C	D	E
S-31C	1420-1		341	(400-1)	
<b>C</b> CIRCLING*	1500-1 418 (500-1)	1540-1 458 (500-1)	1700-1½ 618(700-1¾)	1700-2 618 (700-2)	1740-2¼ 658(700-2¼)

DEL RIO, TEXAS 29°22'N-100°47'W LAUGHLIN AFB (KDLF)

# VOR/DME RWY 31C

SC-3, 22 FEB 2024 to 21 MAR 2024

SC-3, 22 FEB 2024 to 21 MAR 2024