

(EKN1.EKN) 23334

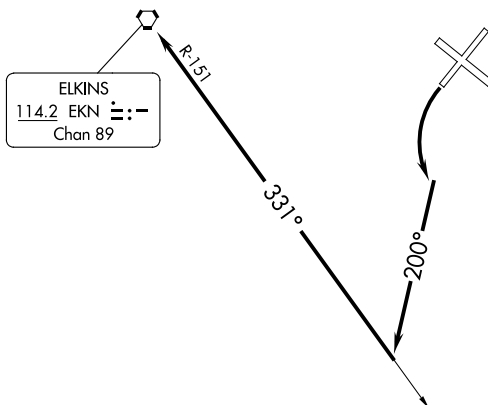
ELKINS/RANDOLPH COUNTY (JENNINGS RANDOLPH FLD) (EKN)

# ELKINS ONE DEPARTURE (OBSTACLE)

AL-128 (FAA)

ELKINS, WEST VIRGINIA

CLARKSBURG APP CON ★  
121.15 284.65  
CTAF  
123.6  
ASOS  
119.275



ELKINS  
114.2 EKN :  
Chan 89

## TAKEOFF MINIMUMS

Rwys 5, 14, 32: NA - Obstacles.

Rwy 23: 700-3 with minimum climb of 340' per NM to 4400 or Standard with minimum climb of 490' per NM to 3700 or 2600-3 for VCOA.



## TAKEOFF OBSTACLE NOTES

Rwy 23: Trees beginning 4' from DER, 270' right of centerline, up to 2028' MSL. Trees, pole beginning 132' from DER, 224' left of centerline, up to 2021' MSL. Trees, pole beginning 544' from DER, 146' left of centerline, up to 2049' MSL. Tower 860' from DER, 185' left of centerline, 88' AGL/2059' MSL. Trees, building, elevators beginning 904' from DER, 281' left of centerline, up to 2066' MSL. Tree 1.1 NM from DER, 2195' right of centerline, 2179' MSL. Trees beginning 1.1 NM from DER, 1744' right of centerline, up to 2210' MSL. Trees beginning 1.2 NM from DER, 1786' right of centerline, up to 2213' MSL. Trees beginning 1.2 NM from DER, 1978' right of centerline, up to 2223' MSL. Tree 1.2 NM from DER, 2157' right of centerline, 2229' MSL. Trees beginning 1.2 NM from DER, 1980' right of centerline, up to 2292' MSL. Trees beginning 1.5 NM from DER, 1394' right of centerline, up to 2358' MSL. Trees beginning 1.5 NM from DER, 2802' right of centerline, up to 2364' MSL. Trees beginning 1.5 NM from DER, 1180' right of centerline, up to 2383' MSL. Trees beginning 1.5 NM from DER, 2201' right of centerline, up to 2425' MSL. Tree 1.5 NM from DER, 1646' right of centerline, 2439' MSL. Trees beginning 1.5 NM from DER, 1379' right of centerline, up to 2478' MSL. Trees beginning 1.6 NM from DER, 1997' right of centerline, up to 2532' MSL. Trees beginning 1.6 NM from DER, 700' right of centerline, up to 2579' MSL. Trees beginning 1.6 NM from DER, 794' right of centerline, up to 2592' MSL. Trees beginning 1.6 NM from DER, 5' right of centerline, up to 2602' MSL. Tree 2.1 NM from DER, 367' left of centerline, 2306' MSL. Trees beginning 2.2 NM from DER, 1007' left of centerline, up to 2454' MSL. Trees beginning 2.2 NM from DER, 475' left of centerline, up to 2463' MSL. Tree 2.2 NM from DER, 422' left of centerline, 2530' MSL. Tree 2.2 NM from DER, 1043' left of centerline, 2562' MSL. Trees beginning 2.2 NM from DER, 251' left of centerline, up to 2563' MSL.

NOTE: Chart not to scale.

## DEPARTURE ROUTE DESCRIPTION

**TAKEOFF RUNWAY 23:** Climbing left turn to heading 200° to 6000 to intercept EKN VORTAC R-151 to EKN VORTAC.

**VCOA:** Obtain ATC approval for VCOA when requesting IFR clearance.

Climb in visual conditions to cross Elkins/Randolph County (Jennings Randolph Fld) at or above 4400 before proceeding on course.

# ELKINS ONE DEPARTURE (OBSTACLE)

ELKINS, WEST VIRGINIA

(EKN1.EKN) 03NOV22

ELKINS/RANDOLPH COUNTY (JENNINGS RANDOLPH FLD) (EKN)

NE-4, 22 FEB 2024 to 21 MAR 2024

NE-4, 22 FEB 2024 to 21 MAR 2024