

APP CRS **211°**  
 Rwy Idg **4501**  
 TDZE **1958**  
 Apt Elev **1987**

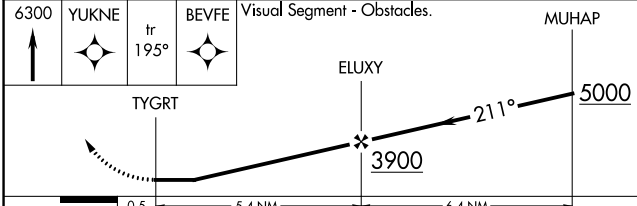
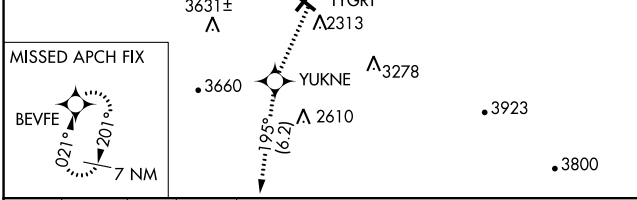
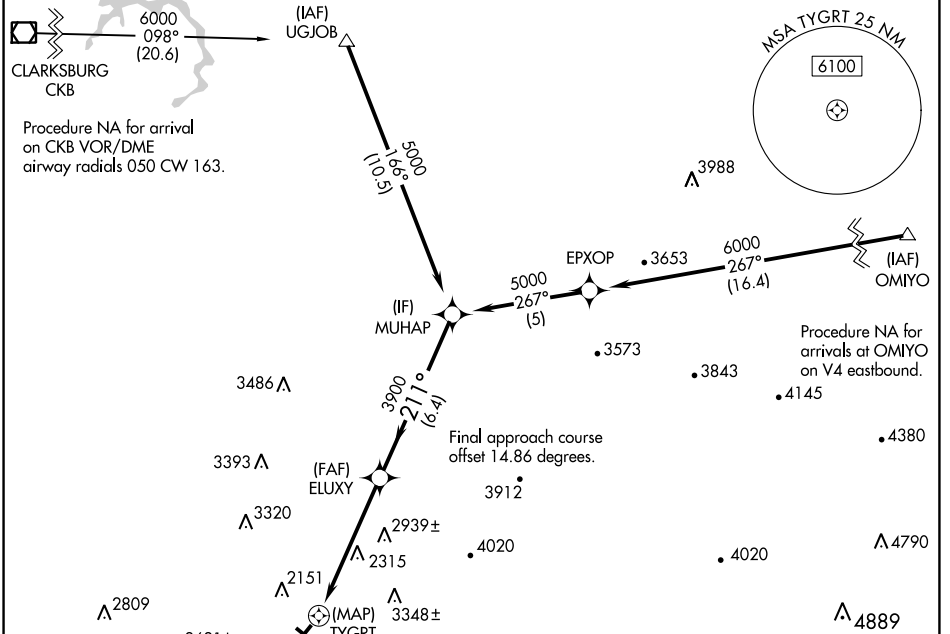
# RNAV (GPS) RWY 23

ELKINS/RANDOLPH COUNTY (JENNINGS RANDOLPH FLD) (EKN)

RNP APCH. Straight-in Rwy 23 NA at night, Circling to Rwy 14, 23, 32 NA at night.  
 When local altimeter setting not received, use Buckhannon altimeter setting and increase all MDAs 100 feet. Rwy 23 helicopter visibility reduction below 1 SM NA.  
 -20°C

MISSED APPROACH: Climb to 6300 direct YUKNE and on track 195° to BEVFE and hold, continue climb-in hold to 6300.

|                        |  |                      |                |
|------------------------|--|----------------------|----------------|
| ASOS<br><b>119.275</b> | CLARKSBURG APP CON ★<br><b>121.15 284.65</b> | CTAF<br><b>123.6</b> | <b>122.9 0</b> |
|------------------------|--|----------------------|----------------|



|           |           |
|-----------|-----------|
| ELEV 1987 | TDZE 1958 |
|-----------|-----------|

2162 ☆

REIL Rwy 23 0  
 MIRL Rwy 5-23 0

|          |                           |                           |                         |               |
|----------|---------------------------|---------------------------|-------------------------|---------------|
| CATEGORY | A                         | B                         | C                       | D             |
| LNVA MDA | 3160-1¼<br>1202 (1200-1¼) | 3160-1½<br>1202 (1200-1½) | 3160-3                  | 1202 (1200-3) |
| CIRCLING | 3160-1¼<br>1173 (1200-1¼) | 3160-1½<br>1173 (1200-1½) | 3720-3<br>1733 (1800-3) | NA            |

# RNAV (GPS) RWY 23

NE-4, 22 FEB 2024 to 21 MAR 2024

NE-4, 22 FEB 2024 to 21 MAR 2024