


LOC/DME I-EKO 108.5 Chan 22	APP CRS 243°	Rwy ldg TDZE 6416 5064 Apt Elev 5140
--	------------------------	--

LDA/DME RWY 24

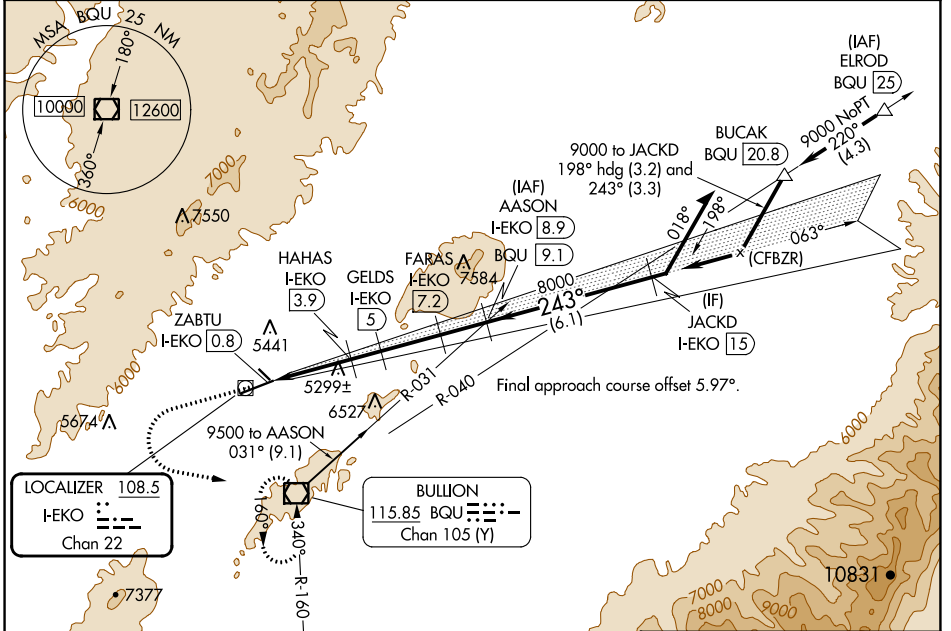
ELKO RGNL (EKO)

⚠ Inoperative table does not apply to Cats A and B. For inop MALSR, increase S-24 Cat C and D visibility to 2 miles. Rwy 24 helicopter visibility reduction below 3/4 SM NA. Circling Rwy 24 NA at night.

MALSR 

MISSED APPROACH: Climb to 6600 then climbing left turn to 10000 direct BQU VOR/DME and hold, continue climb-in-hold to 10000.

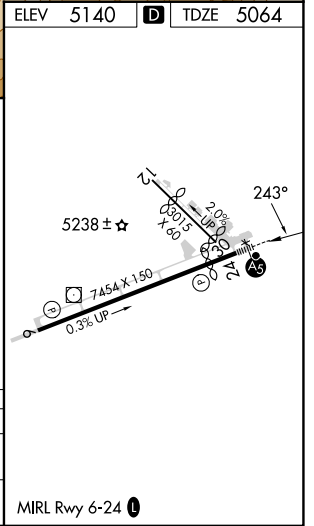
ASOS 119.275	SALT LAKE CENTER 132.25 338.35	UNICOM 123.0 (CTAF) 0
------------------------	--	---------------------------------



ELEV 5140	TDZE 5064
-----------	-----------

6600	10000	BQU
Remain within 10 NM		
ZABTU I-EKO 0.8	HAHAS I-EKO 3.9	GELDS I-EKO 5
FARAS I-EKO 7.2	JACKD I-EKO 15	AASON I-EKO 8.9
6240	6600	7400
780 (800-1)	960 (1000-1½)	1480 (1500-3)
3.1 NM	1.1 NM	2.2 NM
1.7 NM	6.1 NM	
Use I-EKO DME when on the localizer course.		

CATEGORY	A	B	C	D
S-24	5800-1	736 (700-1)	5800-1½	736 (700-1½)
C CIRCLING	5920-1 780 (800-1)	6100-1½ 960 (1000-1½)	6620-3 1480 (1500-3)	6980-3 1840 (1900-3)



SW-4, 22 FEB 2024 to 21 MAR 2024

SW-4, 22 FEB 2024 to 21 MAR 2024