


LOC I-ELM 109.1	APP CRS 242°	Rwy ldg TDZE Apt Elev	7799 955 955
---------------------------	------------------------	-----------------------------	---

ILS or LOC RWY 24

ELMIRA/CORNING RGNL (ELM)

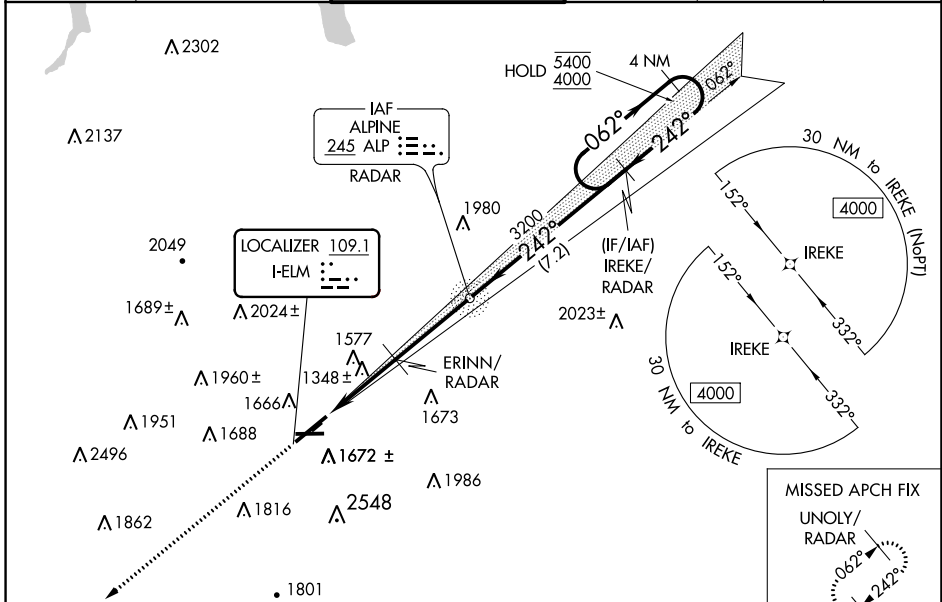
RADAR required to define ERINN. RNAV 1-GPS required from MAP to UNOLY.
RNAV-1 GPS required for procedure entry. ADF or RADAR required.

MALSR


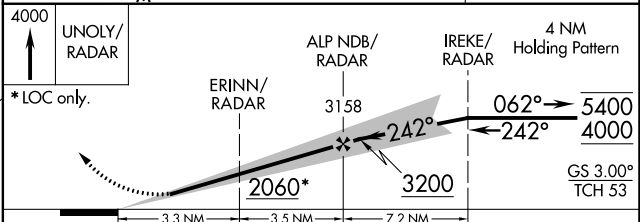
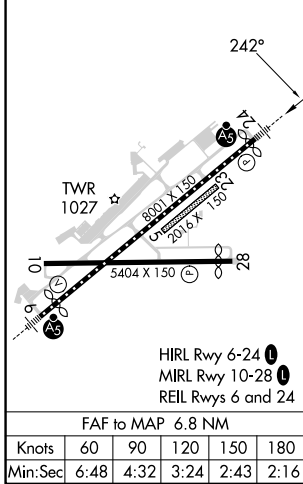
MISSED APPROACH:
Climb to 4000 direct UNOLY/RADAR and hold.
** Missed approach requires minimum climb of 260 feet per NM to 2400.

⚠ Circling NA for Cat D south of Rwy 10 and 28. Inop table does not apply to S-LOC 24 Cats C/D. Circling NA to Rwys 5 and 23. Circling Rwy 10 NA at night.
⚠ For inop ALS increase S-ILS 24 all Cats visibility to RVR 6000.
⚠ -22°C
⚠ **S-ILS 24 RVR 1800 authorized with use of FD or AP or HUD to DA.

ATIS 125.475	ELMIRA APP CON * 128.425 257.8	ELMIRA TOWER * 121.1 (CTAF) 0 257.8	GND CON 121.9	CLNC DEL 121.9	UNICOM 122.95
------------------------	--	---	-------------------------	--------------------------	-------------------------



ELEV 955	D	TDZE 955
----------	----------	----------



CATEGORY	A	B	C	D
S-ILS 24 **		1155/24	200 (200-½)	
S-ILS 24		1340/35	385 (400-¾)	
S-LOC 24	2060/40 1105 (1200-¾)	2060/55 1105 (1200-1)	2060-3	1105 (1200-3)
C CIRCLING	2060-1¼ 1105 (1200-1¼)	2080-1½ 1125 (1200-1½)	2100-3 1145 (1200-3)	2340-3 1385 (1400-3)
ERINN FIX MINIMUMS				
S-LOC 24	1600/24	645 (700-½)	1600-1¾	645 (700-1¾)
C CIRCLING	2020-1¼ 1065 (1100-1¼)	2080-1½ 1125 (1200-1½)	2100-3 1145 (1200-3)	2340-3 1385 (1400-3)

NE-2, 22 FEB 2024 to 21 MAR 2024

NE-2, 22 FEB 2024 to 21 MAR 2024