

# BWALL TWO DEPARTURE (RNAV)

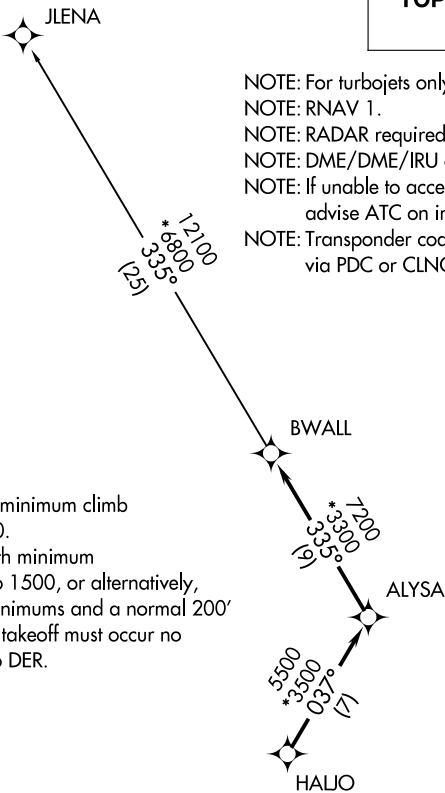
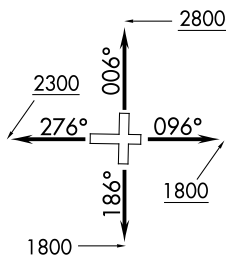
ATIS ★  
127.075  
GND CON  
121.25  
GREENVILLE TOWER ★  
119.9 257.7  
UNICOM  
122.95  
GREER DEP CON ★  
118.8 270.275

**TOP ALTITUDE:  
3000**

NOTE: For turbojets only.  
NOTE: RNAV 1.  
NOTE: RADAR required.  
NOTE: DME/DME/IRU or GPS required.  
NOTE: If unable to accept climb rates, advise ATC on initial contact.  
NOTE: Transponder code will be issued via PDC or CLNC DEL.

### TAKEOFF MINIMUMS

- Rwy 1, 19: Standard.
- Rwy 10: 300-1 or standard with minimum climb of 355' per NM to 1300.
- Rwy 28: 300-2½ or standard with minimum climb of 220' per NM to 1500, or alternatively, with standard takeoff minimums and a normal 200' per NM climb gradient, takeoff must occur no later than 1900' prior to DER.



NOTE: Chart not to scale.

### DEPARTURE ROUTE DESCRIPTION

**TAKEOFF ALL RWYS:** Climb on assigned heading for RADAR vectors to HALJO, then on depicted route to BWALL, thence. . . .

. . . .on JLENA transition. Maintain 3000. Expect clearance to filed altitude within 10 minutes after departure.

**TAKEOFF RWY 1:** Climb heading 006° to 2800 before turning west or northwest.

**TAKEOFF RWY 10:** Climb heading 096° to 1800 before turning west or northwest.

**TAKEOFF RWY 19:** Climb heading 186° to 1800 before turning north.

**TAKEOFF RWY 28:** Climb heading 276° to 2300 before turning north or northwest.

JLENA TRANSITION (BWALL2.JLENA)

SE-2, 22 FEB 2024 to 21 MAR 2024

SE-2, 22 FEB 2024 to 21 MAR 2024

# BWALL TWO DEPARTURE (RNAV)