

TOLEDO, OHIO

HI-ILS Y or LOC Y RWY 25

LOC/DME I-BQE 108.7 Chan 24	APCH CRS 252°	Rwy ldg 10,599 TDZE 678 Arprt Elev 684	[USAF]	EUGENE F KRANZ TOLEDO EXPRESS (KTOL)
---	-------------------------	---	--------	--------------------------------------

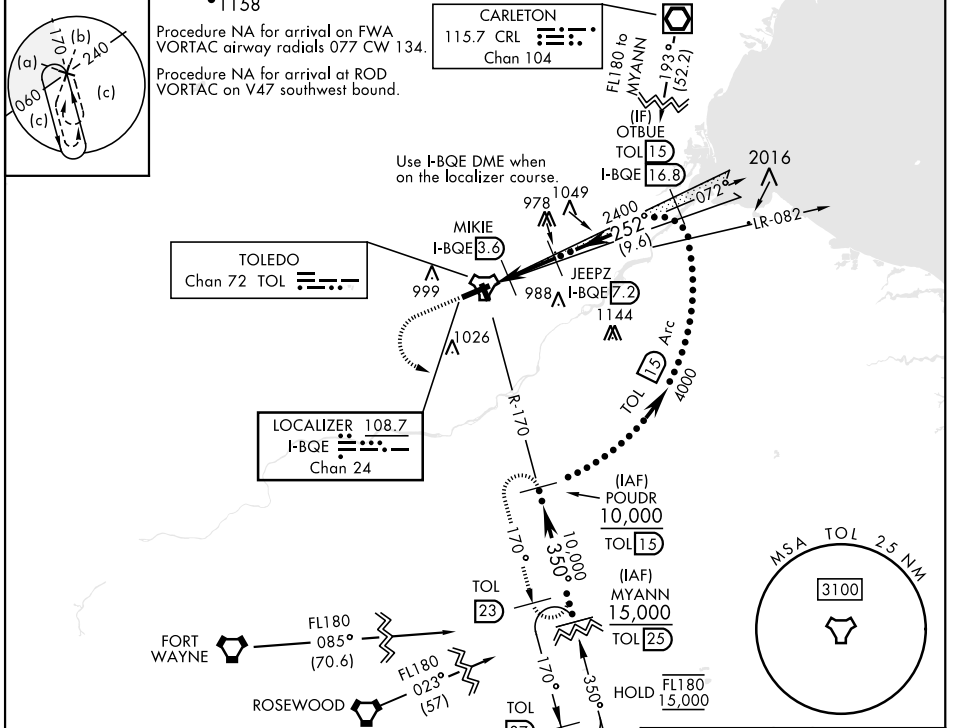
DME required

▼ * When ALS inop, increase RVR to 40, vis to 3/4 mile.
** When ALS inop, increase RVR to 50, vis to 1 mile.

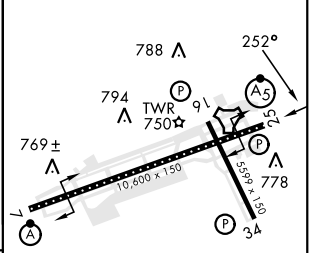
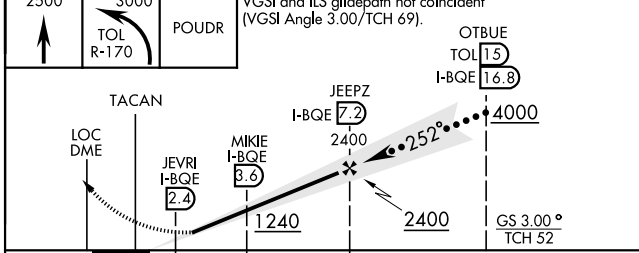
MALSRL (A5)

MISSED APPROACH: Climb to 2500 then climbing left turn to 3000 on TOL R-170 to POUDR (TOL R-170/1.5 DME) and hold.

ATIS 118.75 290.225	TOLEDO APP CON 126.1 317.55	TOLEDO TOWER 118.1 285.4	GND CON 121.9 348.6	CLNC DEL 121.75 348.6	ASR
-------------------------------	---------------------------------------	------------------------------------	-------------------------------	---------------------------------	-----



EMERG SAFE ALT 100 NM 3100	ELEV 684	TDZE 678
----------------------------	----------	----------



CATEGORY	C	D	E
S-ILS 25*	878-1/2	200	(200-1/2)
S-LOC 25**	1000-1/2	322	(400-1/2)
CIRCLING	1300-1 3/4 616 (700-1 3/4)	1360-2 1/4 676 (700-2 1/4)	1360-2 1/2 676 (700-2 1/2)

726 ± A
775 ± A

HIRL Rwy 7-25
MIRL Rwy 16-34
REIL Rwy 16, 34
TDZL/CL Rwy 7

Rwy 7 ldg 10,599'
Rwy 25 ldg 10,599'

TOLEDO, OHIO 41° 35'N-83° 48'W EUGENE F KRANZ TOLEDO EXPRESS (KTOL)

Amdt 6B 08SEP22

HI-ILS Y or LOC Y RWY 25

EC-2, 22 FEB 2024 to 21 MAR 2024

EC-2, 22 FEB 2024 to 21 MAR 2024