

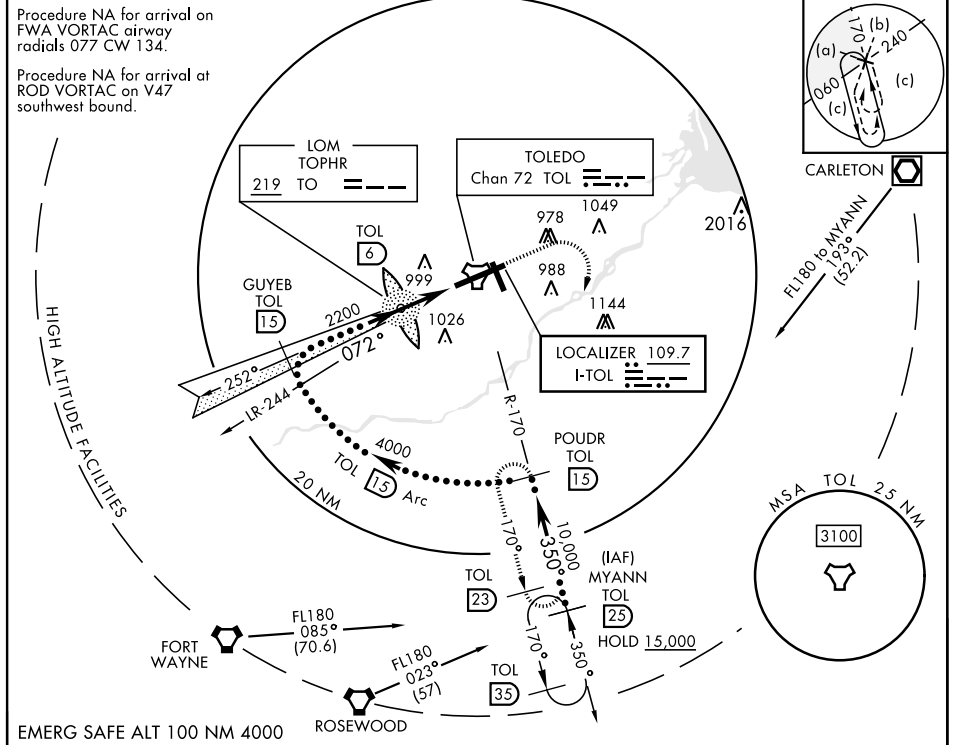
TOLEDO, OHIO

HI-ILS Y or LOC Y RWY 7

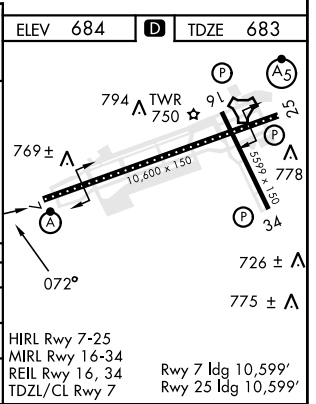
LOC I-TOL 109.7	APCH CRS 072°	Rwy ldg 10,599 TDZE 683 Arpt Elev 684	[USAF]	EUGENE F KRANZ TOLEDO EXPRESS (KTOL)
---------------------------	-------------------------	--	--------	--------------------------------------

DME required	ALSF-2	MISSED APPROACH: Climb to 2500, then climbing right turn to 3000 on TOL TACAN R-170 to POUDR/15 DME and hold.
--------------	--------	---

ATIS 118.75 290.225	TOLEDO APP CON 126.1 317.55	TOLEDO TOWER 118.1 285.4	GND CON 121.9 348.6	CLNC DEL 121.75 348.6	ASR
-------------------------------	---------------------------------------	------------------------------------	-------------------------------	---------------------------------	-----



	MYANN R-170 (25)	POUDR R-170 (15)	GUYEB INTCP LCZR (15)	LOM (6)	TACAN
	15,000	10,000	4000	2162	
	350°	072°	072°	2200	
	GS 3.00° TCH 59	Arc		4.4 NM	
CATEGORY	C	D	E		
S-ILS 7 *	883/18	200 (200-¾)			
S-LOC 7 **	1080/35	397 (400-¾)			
CIRCLING	1300-1¾ 617 (700-1¾)	1400-2¼ 717 (800-2¼)	1400-2½ 717 (800-2½)		



TOLEDO, OHIO 41° 35' N-83° 48' W EUGENE F KRANZ TOLEDO EXPRESS (KTOL)

Amdt 8B 30 NOV23

HI-ILS Y or LOC Y RWY 7

EC-2, 22 FEB 2024 to 21 MAR 2024

EC-2, 22 FEB 2024 to 21 MAR 2024