

# HI-TACAN RWY 7

TACAN TOL Chan <b>72</b>	APCH CRS <b>068°</b>	Rwy ldg <b>10,599'</b> TDZE <b>683</b> Arprt Elev <b>684</b>
-----------------------------	-------------------------	--

[USAF]

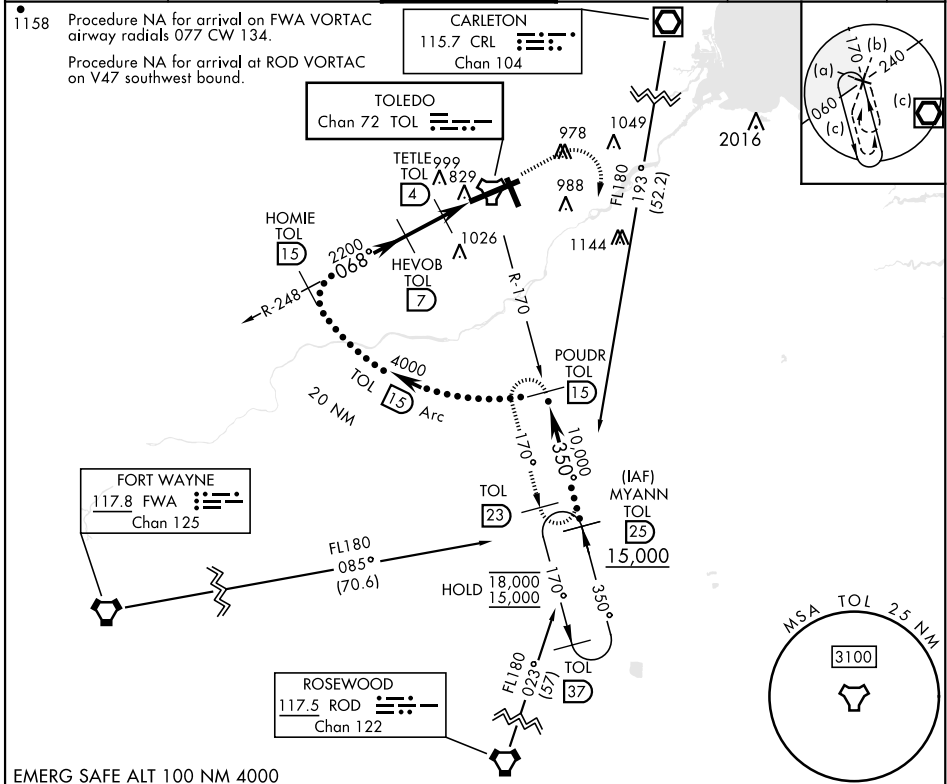
EUGENE F KRANZ TOLEDO EXPRESS (KTOL)

**V** \* When ALS inop increase CAT E vis to 1½ mile.

ALS-F-2

MISSED APPROACH: Climb to 3000 then right turn on TOL TACAN R-170 to POWDR/15 DME and hold.

ATIS <b>118.75 290.225</b>	TOLEDO APP CON <b>126.1 317.55</b>	TOLEDO TOWER <b>118.1 285.4</b>	GND CON <b>121.9 348.6</b>	CLNC DEL <b>121.75 348.6</b>	ASR
-------------------------------	---------------------------------------	------------------------------------	-------------------------------	---------------------------------	-----



EMERG SAFE ALT 100 NM 4000

<p>MYANN R-170 (25)</p> <p>POWDR R-170 (15)</p> <p>HOMIE R-248 (15)</p> <p>HEVOB (7)</p> <p>TETLE (4)</p> <p>TACAN</p> <p>3000</p> <p>POWDR TOL (15)</p> <p>ELEV 684</p> <p>TDZE 683</p> <p>794 A TWR 750 91</p> <p>769 ± A</p> <p>599, 778 A</p> <p>10,600 x 150</p> <p>726 ± A</p> <p>775 ± A</p> <p>068°</p>	<table border="1"> <tr> <td>CATEGORY</td> <td>C</td> <td>D</td> <td>E</td> </tr> <tr> <td>S-7 *</td> <td>1140/45</td> <td>457 (500-7%)</td> <td></td> </tr> <tr> <td>CIRCLING</td> <td>1360-2 677 (700-2)</td> <td>1400-2¼ 717 (800-2¼)</td> <td>1400-2½ 717 (800-2½)</td> </tr> </table> <p>HIRL Rwy 7-25 MIRL Rwy 16-34 REIL Rwy 16, 34 TDZL/CL Rwy 7</p> <p>Rwy 7 ldg 10,599' Rwy 25 ldg 10,599'</p>	CATEGORY	C	D	E	S-7 *	1140/45	457 (500-7%)		CIRCLING	1360-2 677 (700-2)	1400-2¼ 717 (800-2¼)	1400-2½ 717 (800-2½)
CATEGORY	C	D	E										
S-7 *	1140/45	457 (500-7%)											
CIRCLING	1360-2 677 (700-2)	1400-2¼ 717 (800-2¼)	1400-2½ 717 (800-2½)										

# HI-TACAN RWY 7

EC-2, 22 FEB 2024 to 21 MAR 2024

EC-2, 22 FEB 2024 to 21 MAR 2024