

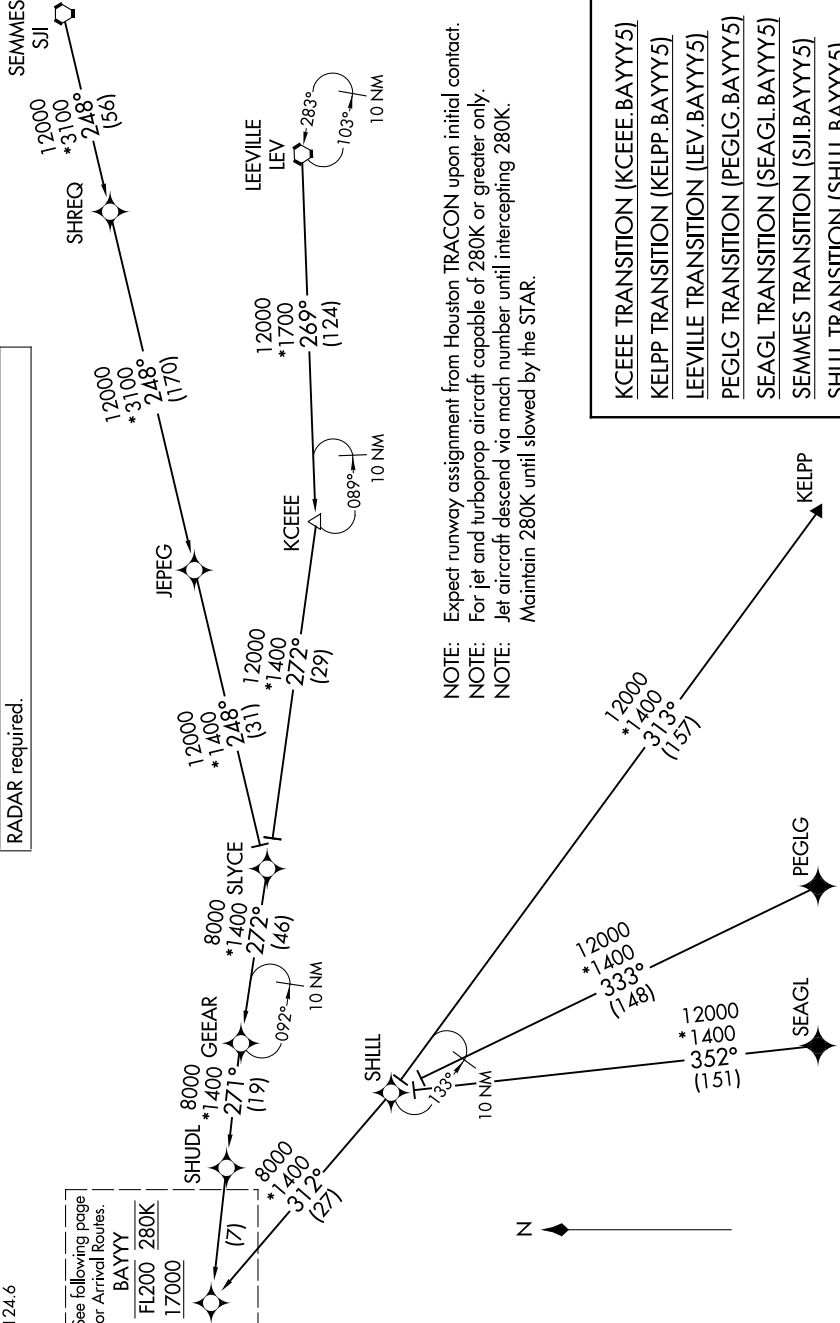
BAYYY FIVE ARRIVAL (RNAV) Transition Routes

SC-5, 22 FEB 2024 to 21 MAR 2024

HOUSTON.APP.CON
119.625 226.675
D-AIS
124.6

See following page
for Arrival Routes.
BAYYY
FL200 280K
17000

RNAV 1-DME/DME/IRU or GPS.
KELPP, PEGLG, and SEAGL TRANSITIONS, RNAV 1-GPS.
RADAR required.



NOTE: Expect runway assignment from Houston TRACON upon initial contact.
NOTE: For jet and turboprop aircraft capable of 280K or greater only.
NOTE: Jet aircraft descend via mach number until intercepting 280K.
Maintain 280K until slowed by the STAR.

- KCEEE TRANSITION (KCEEE.BAYYY5)
- KELPP TRANSITION (KELPP.BAYYY5)
- LEEVILLE TRANSITION (LEV.BAYYY5)
- PEGLG TRANSITION (PEGLG.BAYYY5)
- SEAGL TRANSITION (SEAGL.BAYYY5)
- SEMMES TRANSITION (SJI.BAYYY5)
- SHILL TRANSITION (SHILL.BAYYY5)

NOTE: Chart not to scale.

(CONTINUED ON FOLLOWING PAGE)

SC-5, 22 FEB 2024 to 21 MAR 2024

BAYYY FIVE ARRIVAL (RNAV) Transition Routes