

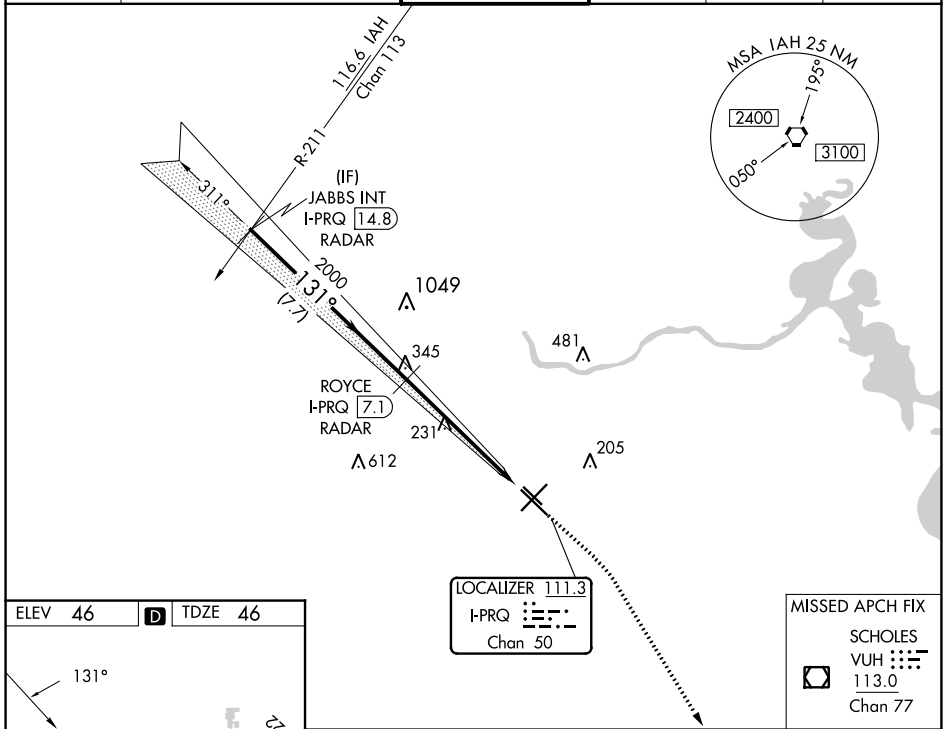
LOC/DME I-PRQ 111.3 Chan 50	APP CRS 131°	Rwy Idg 6568 TDZE 46 Apt Elev 46
---	------------------------	---

ILS or LOC RWY 13R

WILLIAM P HOBBY (HOU)

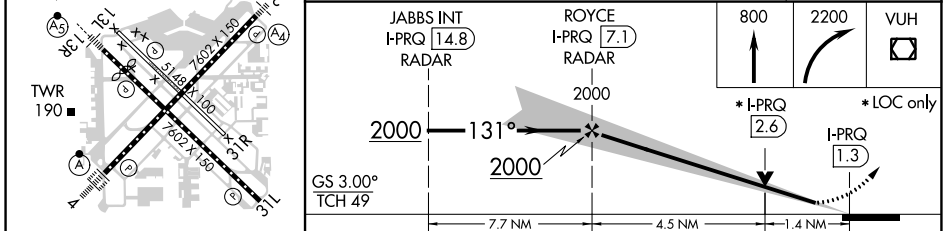
RADAR or DME required for LOC only. RADAR required for procedure entry.		MALSR 	MISSED APPROACH: Climb to 800 then climbing right turn to 2200 direct VUH VOR/DME.
<p>▼ Inop table does not apply to S-ILS Rwy 13R. Rwy 13R helicopter visibility reduction below 3/4 SM NA. For inop ALS, increase S-LOC 13R Cats A/B visibility to RVR 5500, Cats C/D/E to 1 3/4 SM.</p> <p>▲</p>			

D-ATIS 124.6	HOUSTON APP CON 120.05 379.1 EAST 124.35 316.15 WEST	HOBBY TOWER 118.7 256.9	GND CON 121.9	CLNC DEL 125.45	CPDLC
------------------------	--	-----------------------------------	-------------------------	---------------------------	-------



ELEV 46	D	TDZE 46
---------	----------	---------

The inset diagram shows the runway layout with RWY 13R and RWY 31L. It highlights the 131° heading and the 2000-foot altitude for the localizer. Other runways shown include RWY 12L, RWY 12R, RWY 15L, RWY 15R, RWY 18L, RWY 18R, RWY 22L, RWY 22R, RWY 24L, RWY 24R, RWY 26L, RWY 26R, RWY 28L, RWY 28R, RWY 30L, RWY 30R, RWY 31L, and RWY 31R.



CATEGORY	A	B	C	D	E
S-ILS 13R	296/40 250 (300-3/4)				
S-LOC 13R	540/40	494 (500-3/4)	540/50	494 (500-1)	540/60 494 (500-1 1/4)
C CIRCLING	540-1	494 (500-1)	740-2 1/4	694 (700-2 1/4)	860-3 814 (900-3)

SC-5, 22 FEB 2024 to 21 MAR 2024

SC-5, 22 FEB 2024 to 21 MAR 2024