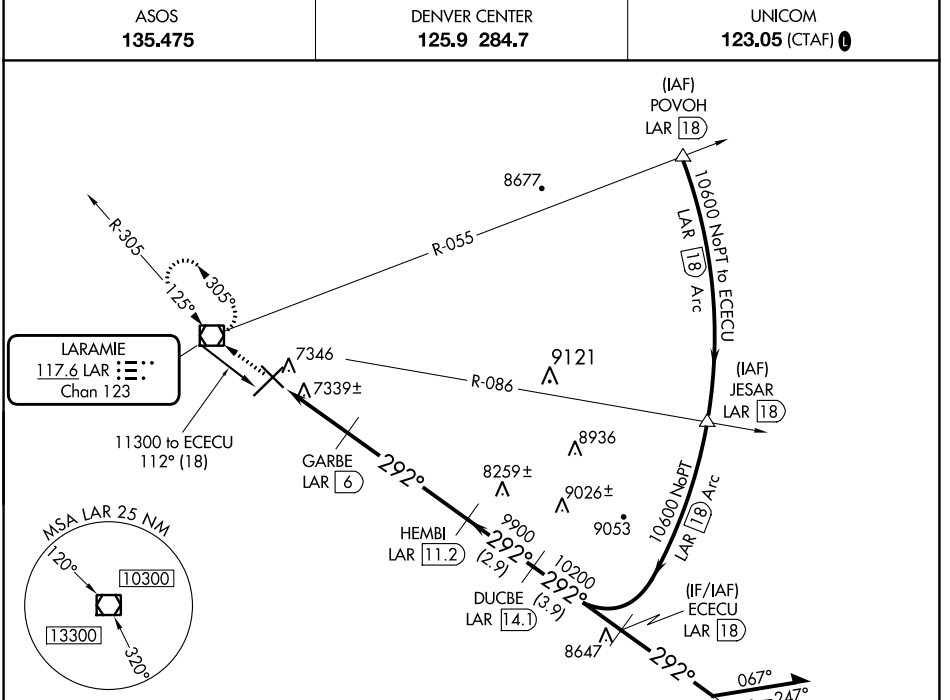


VOR/DME LAR 117.6 Chan 123	APP CRS 292°	Rwy Idg TDZE Apt Elev	6301 7278 7284
-----------------------------------------	------------------------	-----------------------------	-------------------------------------------

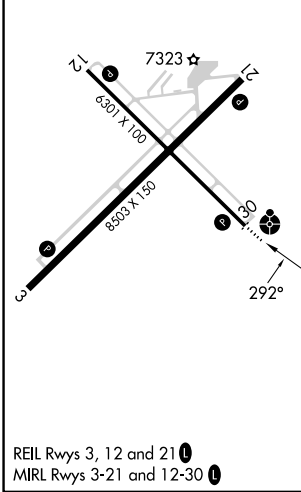
VOR/DME RWY 30

LARAMIE RGNL (L.A.R.)

	MISSED APPROACH: Climb to 9600 direct LAR VOR/DME and hold, continue climb-in-hold to 9600.		
	<table border="1"> <tr> <td>ASOS 135.475</td> <td>DENVER CENTER 125.9 284.7</td> <td>UNICOM 123.05 (CTAF)</td> </tr> </table>	ASOS 135.475	DENVER CENTER 125.9 284.7
ASOS 135.475	DENVER CENTER 125.9 284.7	UNICOM 123.05 (CTAF)	



ELEV 7284	D	TDZE 7278
-----------	----------	-----------



9600	LAR	ECECU LAR 18	Remain within 10 NM
	GARBE LAR 6 HEMBI LAR 11.2 DUCBE LAR 14.1 ECECU LAR 18	10600 10200 9900 8220	112° 292° 292°
0.9	2 NM	5.2 NM	2.9 NM
CATEGORY S-30 CIRCLING	A 7600-1 376 (400-1)	B 322 (400-¾) 7760-1 476 (500-1)	C 7600-1 322 (400-1) 7880-1½ 596 (600-1½)
			D 7920-2 636 (700-2)

NW-1, 22 FEB 2024 to 21 MAR 2024

NW-1, 22 FEB 2024 to 21 MAR 2024