

LOC/DME I-LRD 111.9 Chan 56	APP CRS 178°	Rwy Idg 8743 8236 TDZE 504 499 Apt Elev 508 508
--	------------------------	---

I LS or LOC RWY 18R

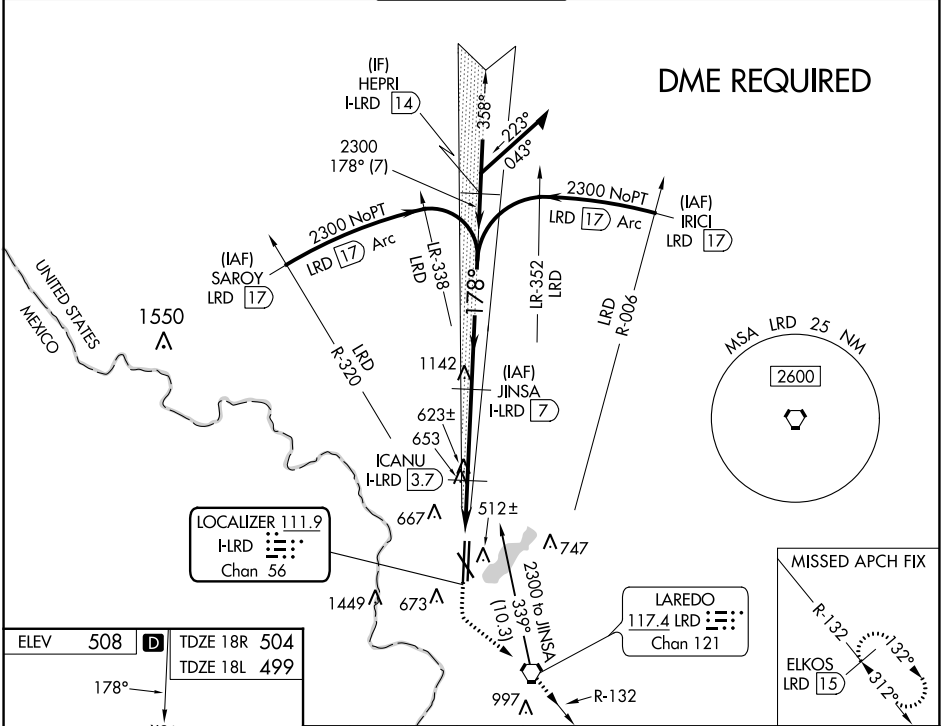
LAREDO INTL (L.R.D)

⚠ Circling NA west of rwys 14 and 36L.
DME required.
For inop ALS, increase S-ILS 18R Cat E visibility to 3/4 SM and increase S-LOC 18R Cat C/D/E visibility to 1 1/2 SM.



MISSED APPROACH: Climb to 1100 then climbing left turn to 2500 direct LRD VORTAC and on LRD VORTAC R-132 to ELKOS/LRD 15 DME and hold.

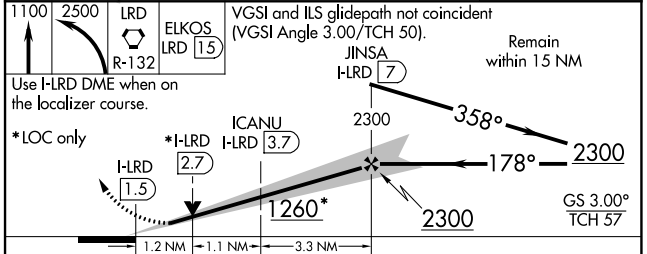
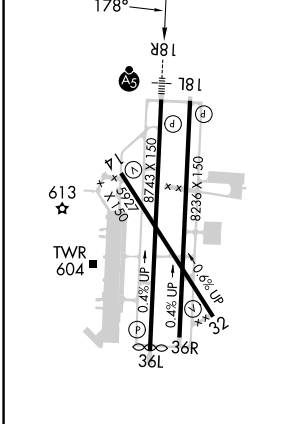
ATIS 125.775	HOUSTON CENTER 127.8 307.2	LAREDO TOWER ★ 120.1(CTAF) 0 257.9	GND CON 121.8	UNICOM 122.95
------------------------	--------------------------------------	--	-------------------------	-------------------------



SC-3, 22 FEB 2024 to 21 MAR 2024

SC-3, 22 FEB 2024 to 21 MAR 2024

ELEV 508	D TDZE 18R 504
	TDZE 18L 499



CATEGORY	A	B	C	D	E
S-ILS 18R	704-1/2		200 (200-1/2)		
S-LOC 18R	920-1/2	416 (500-1/2)	920-3/4		416 (500-3/4)
SIDESTEP 18L	920-1	421 (500-1)	920-1 1/2	920-2	421 (500-2)
C CIRCLING	940-1	980-1	1100-1 1/2	1200-2 1/4	1200-2 1/2
	432 (500-1)	472 (500-1)	592 (600-1 1/2)	692 (700-2 1/4)	692 (700-2 1/2)