

WAAS Ch 77899 W18B	APP CRS 178°	Rwy Idg TDZE Apt Elev	8236 499 508
--	------------------------	-----------------------------	---

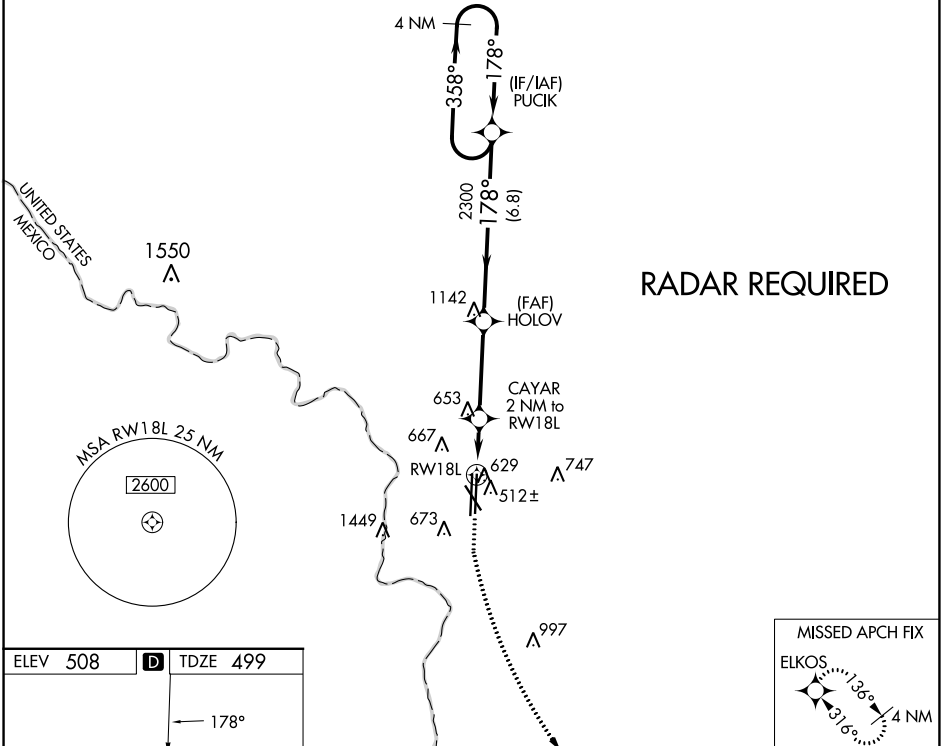
RNAV (GPS) RWY 18L

LAREDO INTL (L.R.D)

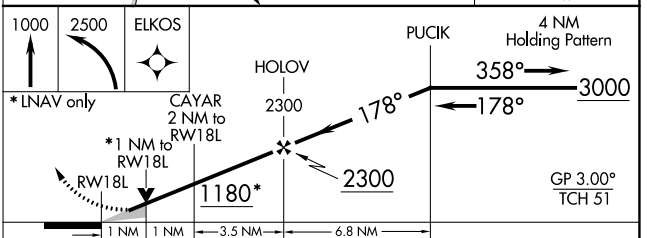
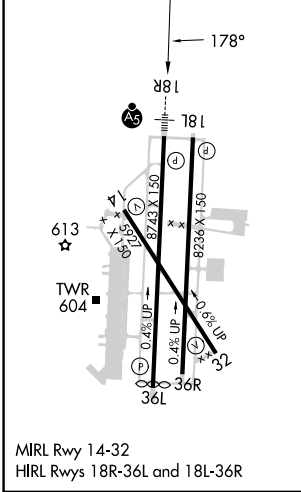
⚠ For uncompensated Baro-VNAV systems, LNAV/VNAV NA below 1°C (34°F) or above 54°C (130°F).
 Circling NA west of Rwys 14 and 36L. DME/DME RNP-0.3 NA.

MISSED APPROACH: Climb to 1000 then climbing left turn to 2500 direct ELKOS and hold.

ATIS 125.775	HOUSTON CENTER 127.8 307.2	LAREDO TOWER * 120.1(CTAF) 257.9	GND CON 121.8	UNICOM 122.95
------------------------	--------------------------------------	--	-------------------------	-------------------------



ELEV 508	D	TDZE 499
----------	----------	----------



CATEGORY	A	B	C	D	E
LPV DA	699-3/4		200 (200-3/4)		
LNAV/VNAV DA	810-7/8		311 (400-7/8)		
LNAV MDA	880-1	381 (400-1)	880-1 1/8	381 (400-1 1/8)	
C CIRCLING	940-1 432 (500-1)	980-1 472 (500-1)	1100-1 1/2 592 (600-1 1/2)	1200-2 1/4 692 (700-2 1/4)	1200-2 1/2 692 (700-2 1/2)

SC-3, 22 FEB 2024 to 21 MAR 2024

SC-3, 22 FEB 2024 to 21 MAR 2024