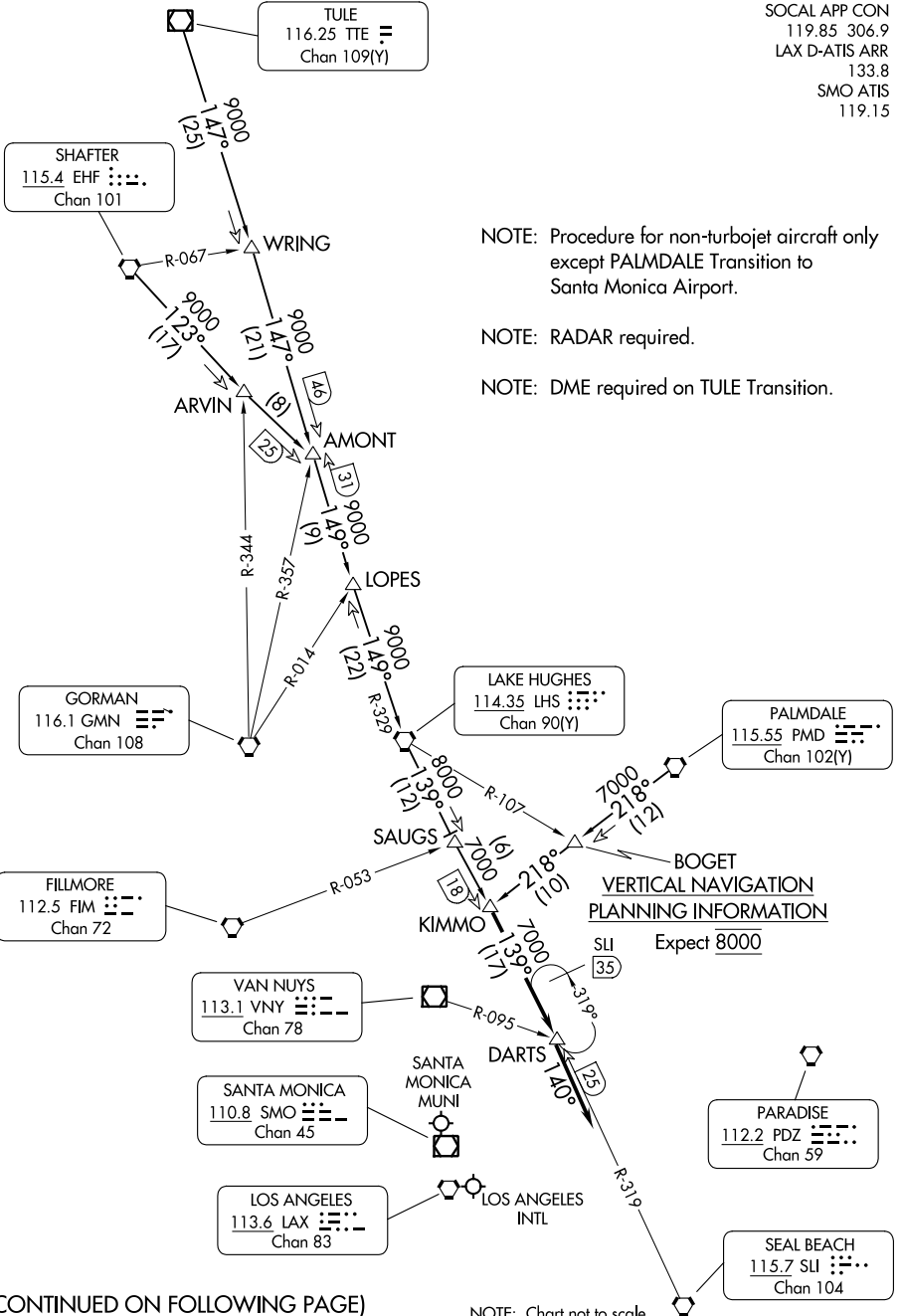


# KIMMO THREE ARRIVAL

AL-237 (FAA)

LOS ANGELES, CALIFORNIA

SOCAL APP CON  
 119.85 306.9  
 LAX D-ATIS ARR  
 133.8  
 SMO ATIS  
 119.15



NOTE: Procedure for non-turbojet aircraft only except PALMDALE Transition to Santa Monica Airport.

NOTE: RADAR required.

NOTE: DME required on TULE Transition.

**VERTICAL NAVIGATION  
 PLANNING INFORMATION**

Expect 8000

NOTE: Chart not to scale.

SW-3, 22 FEB 2024 to 21 MAR 2024

SW-3, 22 FEB 2024 to 21 MAR 2024

(CONTINUED ON FOLLOWING PAGE)

# KIMMO THREE ARRIVAL

LOS ANGELES, CALIFORNIA