

TOP ALTITUDE:
3000

ASOS 119.925
CLNC DEL 121.8 257.65
132.075 269.075 (When twr closed)
GND CON 121.8 257.65
MARTINSBURG TOWER ★ 124.3 (CTAF) 233.7
POTOMAC DEP CON 126.825 239.025

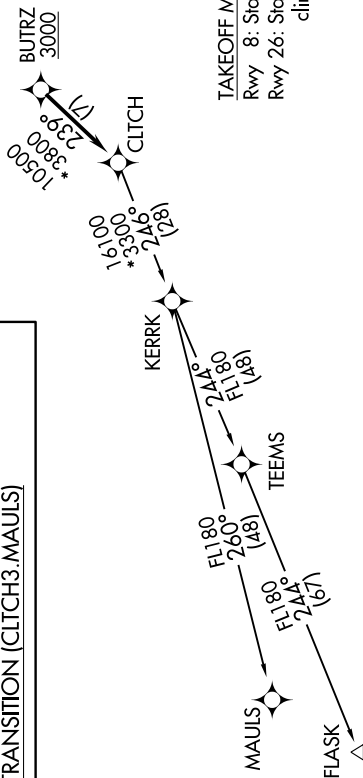
▼ DEPARTURE ROUTE DESCRIPTION

Climb on heading assigned by ATC, expect RADAR vectors to BUTRZ, then on track 239° to CLTCH, thence

. . . . on assigned transition, maintain altitude assigned by ATC, expect clearance to filed altitude within ten (10) minutes after departure.

FLASK TRANSITION (CLTCH3.FLASK)
MAULS TRANSITION (CLTCH3.MAULS)

- NOTE: RNAV 1.
- NOTE: RADAR required.
- NOTE: DME/DME/IRU or GPS required.
- NOTE: Turbo-jets only.
- NOTE: Takeoff Rwy 8: If issued an ATC heading that requires a westbound turn, climb heading 081° to 1200 prior to turning for obstacle avoidance.
- NOTE: Takeoff Rwy 26: If issued an ATC heading that requires a right turn, climb heading 261° to 2400 prior to turning for obstacle avoidance.



TAKEOFF MINIMUMS
Rwy 8: Standard.
Rwy 26: Standard with a minimum
climb of 225' per NM to 2100.

NOTE: Chart not to scale.